



BOARD OF HEALTH AGENDA

April 24, 2024, 5:15 PM

County Courthouse, Room 302 (Ground Floor)

Board of Health 2020-2024 Goals:

Maintain Health Department's fiscal stability

Support and advocate for public health priorities

Review new and changing community/Health Dept priorities

Ongoing Board of Health improvements

Health Department Mission:

Building a healthier community for all through prevention-focused programs and partnerships.

Health Department Vision:

A community where everyone can live a healthier life.

For those wishing to attend virtually:

Join link:

<https://eauclairecounty.webex.com/eauclairecounty/j.php?MTID=m5957096e172158343d4ca24dcd636268>

Webinar number:

2534 801 3550

Webinar password:

Z4vjudpUY33 (94858378 from phones and video systems)

Join by phone

+1-415-655-0001 US Toll

Access code: 253 480 13550

*Mute personal devices upon entry

For those wishing to make public comment regarding an agenda item, you must e-mail the health department at gina.holt@eauclairecounty.gov at least 90 minutes prior to the start of the meeting. Your email will be shared with the Board of Health. If you also wish to speak regarding your email you will be called on during the public comment session.

1. Call to Order. Walk through remote meeting process. Welcome Guests. Order of the Agenda. Request to pull items from the Consent Agenda -5 minutes
2. Public Comment-The Board of Health and Eau Claire City-County Health Department welcome you. Statements pertinent to agenda items may be made by attendees during the public comment section. We do ask that statements are limited to three minutes per person. Written comments may also be provided. Minutes
3. Consent Agenda (Action Required-approved for full content)- 5 minutes
 - a. Approval of minutes from March 27, 2024, meeting
 - b. Approve Donation/Stipend
4. Business Item (Action Required)-15 minutes

PLEASE NOTE: Due to requirements contained in the Wisconsin Open Meetings Law, only those matters placed on this agenda may be considered by the Board of Health at this meeting. If any member of the public desires that the Board of Health consider a matter not included on this agenda, he or she should contact a Board of Health Member or the Health Department Director to have the matter considered for placement on a future Board of Health agenda. Upon reasonable notice, efforts will be made to accommodate the needs of disabled individuals through sign language interpreters or other auxiliary aids. For additional information or to request the service, contact the County ADA Coordinator at 839-4710, (FAX) 839-4854, (TDD) 839-4735 or by writing to the ADA Coordinator, Personnel Department, Eau Claire County Courthouse, 721 Oxford Avenue, Eau Claire, WI 54703.

- a. Review and Receive Quarterly Financial Update-enclosed
 - b. Approve Increasing Tenant and Homeowner Environmental Health Literacy Grant-enclosed
5. Other information items from staff for the Board-*30 minutes*
- a. Annual Report-enclosed
 - b. Health Department Report-enclosed
 - c. HSHS Sacred Heart Hospital Update-enclosed
 - d. Summary of estimated previous year (2023) financial report-enclosed
 - e. Overview of Public Health Foundational Services-enclosed
 - f. Quality Improvement Plan Update-enclosed
6. Board member informational items-*10 minutes*
- a. Board of Health Evaluation – discuss results-enclosed
 - b. WPHA /WAHLDAB Public Health Conference [WALHDAB](#) -verbal
 - c. City Council and County Board Organizational Meetings Update-verbal
 - d. Public Health Policy/Advocacy
 - WPHA/WAHLADAB Policy and Advocacy Committee-enclosed
 - e. Standing committee updates
 - City Council: [City Council Agendas | City of Eau Claire, Wisconsin \(eauclairewi.gov\)](#)
 - County Board: [2022 Meeting Agendas & Minutes | Eau Claire County \(eau-claire.wi.us\)](#)
 - Ground Water Advisory Committee: [Groundwater Advisory | Eau Claire County \(eau-claire.wi.us\)](#)
 - County Opioid Taskforce: [Opioid Task Force | Eau Claire County](#)

Requests from Board members for future agenda items to be given consideration-*5 minutes*

Next business meeting – May 15, 2024 **(one week early)**



BOARD OF HEALTH AGENDA

March 27, 2024, 5:15 PM

County Courthouse, Room 302 (Ground Floor)

February 28, 2024 Board of Health Meeting

County Courthouse, Room G-302

The Board of Health convened in open session at 5:19 pm.

The meeting was called to order by Don Bodeau.

Board Members Present:

Quorum is reached

Terri Nordin-(virtual until 5:26-then in person)

Terry Miskulin

Don Bodeau

Mark Kaeding

Catherine Wildenberg

True Vue

Kim Cronk (virtual)

Call to Order. Welcome Guests. Order of the Agenda. Request to pull items from the Consent

No Public Comment Received

County Supervisor Kim Cronk BOH service recognition- (agenda item moved until after Family Planning Clinic Presentation)

- Board of Health President thanks Kim for her service on the Board.
- Health Officer shares appreciation for Kim's term on the board.
- Kim shared her appreciation for being able to be part of the Board of Health.

Family Planning Clinic -Video Presentation

- Janel Grenz the new Clinical/Communicable Disease Manager was introduced and presented a program presentation to the board.
- Clinic services and patient volume data was shared
- Board members were given the opportunity to discuss and ask questions.

Consent Agenda (Action Required-approved for full content)-

- a. Approval of minutes from February 28, 2024, meeting
- b. Grant/Contract Related Budget Adjustments
- c. Stipend/Donation
- d. Approve Annual Operations and Health Officer Succession Plan Authority

Motion to approve Consent Agenda: Terry Miskulin

2nd Motion: Mark Kaeding

Motion Carried: Yes (unanimous vote)

Business Item (Action Required)

- a. Sign Public Health Week Proclamation

PLEASE NOTE: Due to requirements contained in the Wisconsin Open Meetings Law, only those matters placed on this agenda may be considered by the Board of Health at this meeting. If any member of the public desires that the Board of Health consider a matter not included on this agenda, he or she should contact a Board of Health Member or the Health Department Director to have the matter considered for placement on a future Board of Health agenda. Upon reasonable notice, efforts will be made to accommodate the needs of individuals with disabilities through sign language, interpreters, remote access, or other auxiliary aids. Contact the clerk of the committee or Administration for assistance (715-839-5106). For additional information on ADA requests, contact the County ADA Coordinator at 839-6945, (FAX) 839-1669 or 839-4735, TTY: use Relay (711) or by writing to the ADA Coordinator, Human Resources, Eau Claire County Courthouse, 721 Oxford Avenue, Eau Claire, WI 54703.

- There was a matching proclamation that went to County Board and City Council for approval.
- A question was asked about water quality. We are currently in the process of mapping water quality.

Motion to approve Public Health Week Proclamation as presented by Health Department

staff: Terri Nodin

2nd Motion: Catherine Wildenberg

Motion Carried: Yes (unanimous vote)

b. Approve Annual Report

- The report is being sent to printing.
- We have been using the current formatting for a few years.
- It is a great snapshot of the services offered at the Health Department.
- Final print and electronic report will be shared with BOH.

Motion to approve 2023 Annual Report as presented by Health Department staff: Josh Miller

2nd Motion: Kim Cronk

Motion Carried: Yes (unanimous vote)

c. Approve Reproductive Health National Training Center (RHNTC) Maternal Health Mini-Grant

- This is providing enhanced programs that can improve blood pressure control.

Motion to approve RHNTC Maternal Health Mini-Grant as presented by Health Department

staff: Mark Kaeding

2nd Motion: True Vue

Motion Carried: Yes (unanimous vote)

d. Appoint Board member to serve on the Ground Water Advisory Committee

- Mark Kaeding is interested in continuing to serve on The Ground Water Advisory Committee

Motion to nominate Mark Kaeding as the Board of Health representative on the Water

Advisory Committee: True Vue

2nd Motion: Terry Miskulin

Motion Carried: Yes (unanimous vote)

Other information items from staff for the Board-10 minutes

a. Health Department Report

- Discussed measles outbreak that other areas are experiencing.
- Service Recognition
 - Joe Kalscheur, 5 years, Public Health Specialist
 - Ruth Kilness, Public Health Dietician, 10 years

b. Public Health Emergency Plan review

- Being prepared for a public health emergency is a priority for the Health Department.
- This plan meets federal and state requirements for emergency preparedness.
- A summary of the contents of the plan was shared and discussed.

c. Continuity of Operations Plan (COOP) review

- It is focused on if there is an emergency how do we continue to provide the services that we are required to continue as a health department.
- This COOP lays out the core services.
- Discussion about use in an emergency.
- d. 2024 County Health Rankings overview-<http://www.countyhealthrankings.org/health-data>
 - Eau Claire remains in the top quadrant of the state for health rankings group.
 - This helps us focus on things that can be improved upon.

Board member informational items-20 *minutes*

- a. November work session discussion
 - BOH strategic plan and BOH education were focus points at the November meeting.
 - The Eau Claire City-County Board of Health Strategic Plan-discussion and review.
 - Board members were part of developing the Health Department Strategic Plan.
 - Board members were asked if they would like to continue with having a separate strategic plan or to utilize the Health Department Strategic Plan. With this BOH strategic plan ending this year it was recommended to incorporate feedback into planning document starting in 2025.
 - A strategic priorities document was discussed. Perhaps at the November work session look at what went well the year before and what could be worked on in the upcoming year.
- b. Discussion on Public Health Foundational Services-tabled due to time will move to April meeting agenda.
- c. Board of Health Self Evaluation discussion-
 - Board members had no additions or revision to the questionnaire. A survey link will be sent to the board members prior to the May meeting.
- d. Public Health Policy/Advocacy update
 - WI Legislative update -[WAHLDAB legislative grid tracker](#)-the link shows all of the different bills.
 - Federal update-financing went through until the end of the federal fiscal year.
 - HSHS/Prevea closure-Health Department continues to work collaboratively. Data continues to come in regarding clinical data (visits, etc.)
- e. Standing Committee Updates:
 - City Council: [City Council Agendas | City of Eau Claire, Wisconsin \(eauclairewi.gov\)](#)
 - o Council members had a work session at the March 12th meeting.
 - o Public Health Week Proclamation was signed.
 - o Josh Miller has expressed interest in continuing serving on the Board of Health, City Council committee updates will take place in April.
 - County Board: [County Board Meeting Agendas & Minutes](#)
 - o Childrens long term service program, HSHS closure, climate action and resilience plan were presented at County Board Meeting.
 - Ground Water Advisory Committee: [Groundwater Advisory | Eau Claire County \(eau-claire.wi.us\)](#)-meeting will take place next week
 - County Opioid Taskforce: [Opioid Task Force | Eau Claire County](#)- the committee was extended for a bit longer. Another meeting will take place in the next month or two.

Requests from Board members for future agenda items to be given consideration-5 *minutes*

Next business meeting – April 24, 2024

Don Bodeau adjourned meeting at 7:13pm

Fact Sheet – 4/24/2024 Board of Health Meeting

Agenda Item 3.b

Stipend Received

The Eau Claire City-County Health Department has been offered the following stipend:

Agency	Description	Amount
NWWI Healthcare Emergency Readiness Coalition	Received scholarship for Joe Kalscheur, Emergency Preparedness Public Health Specialist, to attend the 2024 Wisconsin Governor’s Conference on Emergency Management.	\$500

Budget Implications: Stipend in the amount of \$500.

Staff Recommendation: Accept stipend.

**Fact Sheet – 4/24/2024 Board of Health Meeting
Agenda Item 4.a
Quarter 1, 2024 Financial Update**

Quarter 1, 2024 Financial Statements are attached.

Balance Sheet

- Cash is up from the prior year and will fluctuate based on when revenue is received and when expenses are paid.
- Accounts receivables and deferred inflows will vary based on the timing of when invoices are created, and the payments are received.
- Prepayments fluctuate based upon timing of health insurance and life insurance payments.
- Accounts payable will fluctuate based on timing of payments. Payments are remitted weekly on Friday.
- The Fund Balance Control Accounts is the net of the revenues and expenses as of March 31.

Revenue and Expense Report

- The revised budget reflects our adopted budget plus \$2.38 million budget carryover for non-calendar year grants from 2023 to 2024, and Quarter 1 grant/contract changes totaling \$85,300.
- Grant/contract changes will continue to be added to the revised budget, and at the end of the year, non-calendar year grants that start in 2024 and end in 2025 will have the balance reduced from the 2024 budget and added to the 2025.

Revenue

- Intergovernmental revenue appears to be behind because revenue generally arrives a month or two after it is billed.
- Most licensing and permit revenue is received in June.
- Charges for services – intergovernmental includes taxes from the County, Medicaid reimbursements, and other revenue billed to the state and counties. Generally, the revenue arrives a month or two after it is earned.
- Miscellaneous revenue includes non-governmental grants. The revenue generally arrives a month after it is earned.
- The entire 2024 tax levy allocation from the City has been recorded. The County portion is received in monthly installments.

Expense

- We are 25% of the way through the year. Certain expenses like workers compensation are paid in advance, and other expenses are paid in subsequent months.
- 5.5 of 26.2 payrolls budgeted (21%) have been recorded.

**Eau Claire City-County Health Department
Balance Sheet
As of March 31, 2024**

Assets	<u>Account Balance</u>	<u>Change from Prior Year</u>
Cash and Investments <i>(Cash in bank , petty cash, gift cards)</i>	\$ 4,204,695	\$ 591,666
Accounts Receivables <i>(Bills outstanding non government)</i>	\$ 35,111	\$ (433,491)
Due from other governments <i>(Bills outstanding government)</i>	\$ 46,232	\$ (5,993)
Taxes Receivable	\$ -	\$ -
Prepayments <i>(Payments made in advance i.e. health, life insurance)</i>	\$ 234,193	\$ 121,804
Inventories <i>(Radon kits)</i>	\$ 7,621	\$ 3,477
Allowance for Doubtful Accts <i>(Estimate of uncollectables)</i>	\$ (181)	\$ (181)
Total Assets	\$ 4,527,669	\$ 277,282
Liabilities		
Accounts Payable <i>(Amts owed incl. payroll taxes, health, life)</i>	\$ 484,559	\$ 303,147
Accrued Liabilities <i>(Accrued Payroll done at year end)</i>	\$ -	\$ (270)
Due to other governments <i>(Sales tax, state license fees)</i>	\$ 34,607	\$ 8,448
Deferred Inflows <i>(Amts billed-not received, advance on contracts)</i>	\$ 88,333	\$ (432,504)
Total Liabilities	\$ 607,499	\$ (121,179)
Fund Balances		
Fund Balance <i>(Restricted, non-spendable prepayments, inventories)</i>	\$ 2,663,175	\$ 197,020
Control Accounts <i>(Current year revenue over (under) expense)</i>	\$ 1,256,996	\$ 201,441
Total Fund Balances	\$ 3,920,170	\$ 398,461
Total Liabilities and Fund Balances	\$ 4,527,669	\$ 277,282

	<u>Balance</u>
<i>Non-Spendable Pre Payment</i>	\$ 133,390
<i>Non-Spendable Inventory</i>	\$ 2,702
<i>Restricted to Particular Projects</i>	\$ 116,028
<i>Restricted - Capital Purchases</i>	\$ 400,000
<i>Restrcted - Working Capital</i>	\$ 1,559,034
<i>Restricted - Special Projects</i>	\$ 255,000
Fund Balance as of 12/31/22	\$ 2,466,155

**Eau Claire City-County Health Department
Revenue and Expense Statement
As of March 31, 2024**

Revenues	Adoped Budget	Revised Budget	YTD Actual	% of Bdgt	Change from Prior Year
Intergovernmental <i>(Federal and state grants)</i>	\$ 2,359,600	\$ 4,464,600	\$ 345,304	7.7%	\$ (70,895)
Licenses & Permits <i>(Lodging, restaurant, sanitary etc.)</i>	\$ 759,900	\$ 759,900	\$ 60,944	8.0%	\$ 22,666
Fines & Forfeitures	\$ -	\$ -	\$ -	0.0%	\$ -
Charges for Services <i>(Water tests, vaccinations, inspections etc.)</i>	\$ 162,100	\$ 162,100	\$ 76,041	46.9%	\$ 14,512
Charges for Services - Intergov <i>(Medicaid, schools, County tax)</i>	\$ 1,863,700	\$ 1,863,700	\$ 408,141	21.9%	\$ 11,095
Misc revenue <i>(Gifts, reimbursements, non-governmental grants)</i>	\$ 205,400	\$ 517,800	\$ 207,350	40.0%	\$ 46,579
Other Financing Sources <i>(Taxes from City, CDBG revenue)</i>	\$ 2,192,559	\$ 2,238,459	\$ 2,125,861	95.0%	\$ 35,574
Other Budgeted Receipts <i>(Budget only-use of fund balance)</i>	\$ 190,041	\$ 190,041	\$ -	0.0%	\$ -
Total Revenues	\$ 7,733,300	\$ 10,196,600	\$ 3,223,640	31.6%	\$ 59,531
Expenses					
Personnel <i>(Payroll, benefits, auto allowance)</i>	\$ 6,647,500	\$ 8,352,800	\$ 1,545,581	18.5%	\$ 8,439
Contractual Services <i>(Postage, software, rent, advertising, audit, etc.)</i>	\$ 779,300	\$ 1,338,700	\$ 309,461	23.1%	\$ (3,874)
Utilities <i>(Phones, garbage)</i>	\$ 48,000	\$ 79,600	\$ 12,188	15.3%	\$ (1,254)
Fixed Charges <i>(License & Permits, Workers Comp)</i>	\$ 27,500	\$ 29,300	\$ 13,920	47.5%	\$ 280
Supplies <i>(Office, lab, medical, equipment, gift cards, etc.)</i>	\$ 196,600	\$ 355,000	\$ 80,754	22.7%	\$ 424
Contributions & Other Payments <i>(Pymts to other organizations)</i>	\$ 5,300	\$ 12,100	\$ 4,742	39.2%	\$ (4,826)
Capital Purchases <i>(Long term purchases over \$5,000)</i>	\$ -	\$ -	\$ -	0.0%	\$ (141,098)
Other Financing Uses <i>(Debt service for debt on unfunded pension)</i>	\$ 29,100	\$ 29,100	\$ -	0.0%	\$ -
Total Expenses	\$ 7,733,300	\$ 10,196,600	\$ 1,966,644	19.3%	\$ (141,910)
Net Revenue Over / (Under) Expenses			<u>\$ 1,256,996</u>		<u>\$ 201,441</u>

Financial Statement Explanations

Balance Sheet Categories

Notes

Assets

Cash and Investments	Cash accounts including petty cash and gift cards
Accounts Receivables	Receivables
Due from Other Governments	Receivables from federal, state, local governments and school districts
Taxes Receivable	Amounts on the Tax Roles not yet received (Septic Maintenance, Reinspection Fees etc.)
Prepayments	Payments made in advance, e.g., health and life insurance
Inventories	Radon test kits
L-T Receivables	Allowance for doubtful/uncollectable accounts (Family Planning Clinic)

Liabilities

Accounts Payable	Payments owed for products and services received
Accrued Liabilities	Includes accrued payroll expenses at year end
Deposits	Grants not totally spent out (we may have to return)
Due to Other Governments	Sales tax payable, state license fees, county rent
Deferred Inflows	Amounts billed but not yet received; now also includes advance on contracts

Fund Balances

Fund Balance	Comprised of restricted amounts and non-spendable pre-payments and inventories
Control Accounts	Net of revenue and expense control accounts for current year

Revenue and Expense Categories

Revenues

Intergovernmental	Federal, state and other aid/grants
Licenses & Permits	License & permit revenue; e.g., lodging, restaurant, sanitary
Charges for Services	Fees for services rendered; e.g., water testing, vaccinations, inspection fees
Charges for Services - Intergovernmental	Services to governments; e.g., Eau Claire County tax levy, Medicaid payments, school districts
Misc Revenue	Grants from non-government agencies, e.g., Mental Health Matters, United Way
Other Financing Sources	Tax levy from the City of Eau Claire, Community Development Block Grant
Other Budgeted Receipts	Fund balance use

Expenses

Personnel	Wages, payroll taxes and benefits
Contractual Services	Postage, computer service charges, rent, equipment leases, advertising, auditing, etc.
Utilities	Phones & garbage
Fixed Charges	Licenses & permits, workers compensation and property & liability insurance
Supplies	Office, lab, medical, etc.
Contributions & Other Payments	Miscellaneous payments made to outside organizations and consultants
Capital Purchases	Long term purchases - over \$5,000 each
Other Financing Uses	Transfers to debt service - In 2008, debt was issued to pay off the unfunded pension. This is the Health Department portion of the yearly amount. Obligation is expected to be paid off 04/01/2028.
Other Disbursements	Budgeted excess of revenue over expenses which would go into Fund Balance

Supervisor	Program	Project	Start	End	Project Description
Peggy	2084	25002	01/01/24	12/31/24	MCH
Cortney	2081	25004	10/01/23	09/30/24	Prevention
Nicole	2086	25006	01/01/24	12/31/24	Reg Radon Info Center
Beth	2083	25007	01/01/24	12/31/24	Childhood Lead
Jackie	2085	25008	01/01/24	12/31/24	Immunization
Beth	2083	25009	01/01/24	12/31/24	Prenatal Care Coordination
Beth	2083	25014	12/01/23	09/30/24	DOT Child Passenger Safety
Tegan	2085	25017	07/01/23	06/30/24	Wisconsin Well Woman
Jackie	2085	25028	07/01/23	06/30/24	Public Health Emergency Preparedness
Peggy	2084	25029	07/01/23	06/30/24	Tobacco
Beth	2083	25041	01/01/24	12/31/24	Blood Lead Testing/EH Investigation
Jackie	2085	25045	07/01/23	06/30/24	Medical Reserve Corps - State
Peggy	2084	25056			Alliance For Substance Abuse Prevention
Beth	2083	25060	01/01/24	12/31/24	WIC Grant - Program Admin
Beth	2083	25061	01/01/24	12/31/24	WIC Grant Client Svcs
Beth	2083	25062	01/01/24	12/31/24	WIC Grant Nutrition Ed
Beth	2083	25063	01/01/24	12/31/24	WIC Grant Brst Feed Promo/Support
Beth	2083	25064	01/01/24	12/31/24	WIC Farmers Mkt Nutrition Program
Beth	2083	25065	01/01/24	12/31/24	WIC Brst Feeding Peer Counseling
Beth	2083	25069	10/01/23	09/30/24	Fit Family
Tegan	2082	25070	04/01/23	03/31/24	Reproductive Health-Title X Grant
Tegan	2082	25071	01/01/24	12/31/24	Reproductive Health-Program Generated Revenue
Cortney	2081	25079			Healthy Communities Council
Cortney	2081	25081			Comm Health Partnership Project
Tegan	2085	25100	01/01/24	12/31/24	HIV Partner Services
Tegan	2085	25102	01/01/24	12/31/24	Get Yourself Tested
Jackie	2085	25110	07/01/23	06/30/24	TB Dispensary
Jackie	2085	25111	01/01/24	12/31/24	TB Medical Assistance
Nicole	2086	25130	01/01/24	12/31/24	NEHA Continuous Improvement on Standards
Peggy	2084	25140			Mental Health Action Team - Mhat
Beth	2083	25142	07/01/23	06/30/24	United Way Nurse-Family Partnership
Peggy	2084	25145	07/01/23	06/30/24	HWPP - Mental Health Matters
Nicole	2086	25160	08/01/23	07/31/24	CDBG
Jackie	2085	25181	12/01/23	09/29/24	NACCHO MRC ORA
Beth	2083	25172	01/01/24	12/31/24	Marathon County Nurse-Family Partnership
Nicole	2086	25182			Hoarding Task Force
Jackie	2085	25193	07/01/23	06/30/24	Communicable Disease & Prevention
Peggy	2084	25202	09/01/23	08/31/24	Overdose Fatality Reviews
Beth	2083	25209	01/01/24	12/31/24	WIC Interpreters
Peggy	2084	25210	01/01/24	12/31/24	Diversion
Beth	2083	25212	10/01/23	09/30/24	Family Foundations
Peggy	2084	25213	01/01/24	12/31/24	Substance Use Prevention
Peggy	2084	25215	02/01/23	01/31/24	Sexual Violence Prevention
Peggy	2084	25224	08/31/23	08/30/24	Strategic Prevention Framework-Partnerships for Success
Lieske	2080	25233	07/01/23	06/30/24	WWPHRC/OPEHC
Lieske	2080	25234	07/01/23	06/30/24	WWPHRC/OPEHC Carryover
Lieske/Marisa	2085	25239	03/01/21	12/31/24	ARPA COVID Recovery Fund
Tegan	2082	25241	01/01/24	12/31/24	Reproductive Health-Women's Health Block Grant
Tegan	2082	25242	01/01/24	12/31/24	Reproductive Health-Pregnancy Outreach
Cortney	2081	25243			Group Health COVID Vaccination/Outreach
Cortney	2081	25245	01/01/22	05/31/25	Mobilizing Community for a Just Response (MC4JR)
Beth	2083	25248	10/01/23	09/30/24	Family Foundations ARP Grocery
Beth	2083	25249	12/05/22	04/04/24	Roots & Wings Nurse-Family Partnership
Tegan	2082	25250	07/01/23	06/30/24	Reproductive Health-Pap/Colp Services
Cortney	2081	25252	01/01/23	06/30/24	MCH Equity
Tegan	2082	25253	01/01/24	12/31/24	Milwaukee Burger WWWP Donation
Jackie	2085	25254	01/01/24	12/31/24	TB Treatment Assistance Program
Cortney	2081	25255	06/01/22	05/31/24	Qualitative Data
Jackie	2085	25257	06/01/23	05/31/24	Immunize Wisconsin
Peggy	2084	25258	07/01/23	06/30/24	Public Health Vending Machine
Tegan	2082	25259	02/01/23	06/30/24	Mpox Response
Jackie	2085	25260	09/01/23	06/30/24	MRC STTRONG
Peggy	2084	25261	07/18/23	12/31/24	County Opioid Settlement
Peggy	2084	25262	01/01/24	12/31/24	Marshfield Clinic Addressing Health Disparities
Peggy	2084	25263	01/01/24	12/31/24	MCW AHW Nutrition Security
Matt	2087	25264	10/01/23	05/31/25	Env Health Capacity Public Water Systems
Nicole	2086	25265	10/01/23	05/31/25	Env Health Capacity Housing Hazards
Peggy	2084	25266	10/01/23	09/01/24	Marshfield Clinic State Opioid Response
Tegan	2082	25267	02/22/24	09/30/24	RHNTC Maternal Health
			12/01/22	11/30/27	Public Health Infrastructure

2023 to 2024 Carryover for Non-Calendar Year Grants

<u>Project</u>	<u>Start</u>	<u>End</u>	<u>Project Description</u>	<u>Grant Amt</u>	<u>2023 Expenses</u>	<u>Carryover into 2024</u>
25004	10/01/23	09/30/24	Prevention	\$10,905	\$3,025.47	\$7,875
25017	07/01/23	06/30/24	Wisconsin Well Woman	\$71,835	\$32,975.00	\$38,825
25028	07/01/23	06/30/24	Public Health Emergency Preparedness	\$53,463	\$24,828.38	\$28,672
25029	07/01/23	06/30/24	Tobacco	\$54,466	\$27,548.85	\$26,951
25045	07/01/23	06/30/24	Medical Reserve Corps - State	\$5,000	\$2,622.60	\$2,377
25069	10/01/22	09/30/23	Fit Family	\$18,960	\$767.73	\$18,232
25070	04/01/23	03/31/24	Reproductive Health-Title X Grant	\$229,000	\$182,856.93	\$46,143
25142	07/01/23	06/30/24	United Way Nurse-Family Partnership	\$95,000	\$47,360.48	\$47,640
25145	07/01/22	06/30/23	HWPP - Mental Health Matters	\$78,276	\$76,433.51	\$1,866
25145	07/01/23	06/30/24	HWPP - Mental Health Matters	\$150,000	\$78,964.64	\$71,035
25160	08/01/23	07/31/24	CDBG	\$85,400	\$39,464.98	\$45,935
25193	07/01/23	06/30/24	Communicable Disease & Prevention	\$7,090	\$4,305.48	\$2,795
25202	09/01/23	08/31/24	Overdose Fatality Review	\$35,000	\$13,684.35	\$21,316
25212	10/01/23	09/30/24	Family Foundations	\$508,620	\$151,356.33	\$357,244
25215	02/01/23	01/31/24	Sexual Violence Prevention	\$90,000	\$81,648.15	\$8,352
25224	08/31/22	08/30/23	Strategic Prevention Framework-Partnerships for Success	\$243,668	\$236,785.63	\$6,914
25224	08/31/23	08/30/24	Strategic Prevention Framework-Partnerships for Success	\$300,000	\$114,345.47	\$185,655
25233	07/01/23	06/30/24	WWPHRC/OPEHC	\$310,501	\$121,725.70	\$188,774
25234	07/01/23	06/30/24	WWPHRC/OPEHC Carryover	\$47,070	\$39,287.98	\$7,812
25239	03/01/21	12/31/24	ARPA COVID Recovery Fund	\$837,534	\$203,130.59	\$634,369
25245	01/01/22	05/31/24	Mobilizing Community for a Just Response (MC4JR)	\$71,470	\$47,005.25	\$24,495
25248	10/01/23	09/30/24	Family Foundations ARP Grocery	\$27,500	\$14,550.00	\$12,950
25249	12/05/22	04/04/24	Roots & Wings Nurse-Family Partnership	\$125,000	\$11,818.68	\$113,181
25250	07/01/23	06/30/24	Reproductive Health-Pap/Colp Services	\$8,683	\$4,783.82	\$3,916
25252	01/01/23	06/30/24	MCH Equity	\$465,000	\$198,419.47	\$266,581
25255	06/01/22	05/31/24	Qualitative Data	\$30,851	\$6,272.76	\$24,627
25257	06/01/23	05/31/24	Immunize Wisconsin	\$50,000	\$21,501.25	\$28,499
25258	07/01/23	06/30/24	Public Health Vending Machine	\$12,714	\$3,657.94	\$9,042
25259	02/01/23	06/30/24	Mpox Response	\$90,000	\$26,267.87	\$63,732
25260	09/01/23	06/30/24	MRC STTRONG	\$25,000	\$9,776.83	\$15,223
25261	07/18/23	12/31/24	County Opioid Settlement	\$79,000	\$12,000.00	\$67,000
Total				\$4,217,006	\$1,839,172	\$2,378,028

Fact Sheet –4/24/2024 Board of Health Meeting**Agenda Item 4.b****Wisconsin Site Evaluation Program - Increasing Tenant and Homeowner Environmental Health Literacy**

The Eau Claire City-County Health Department applied for and received a one-time \$15,000 mini-grant to increase tenant and homeowner environmental health literacy from the Wisconsin Department of Health Services – Wisconsin Site Evaluation Program (SEP). This program is funded by the Agency for Toxic Substances and Disease Registry’s (ASTDR’s) Partnership to Promote Local Efforts to Reduce Environmental Exposure (APPLETREE). The SEP analyzes chemical information to identify risks to human health, which includes determining the health impact of past and current waste sites and other releases to the environment.

The project timeline is April 1, 2024, through September 30, 2025. This project will allow ECCCHD to develop and distribute a booklet for new homeowners and tenants with detailed information on environmental health risks in and around their home. The purpose of this booklet will be to promote awareness and encourage prevention of harmful environmental health exposures. It will provide the target populations with an easy-to-read resource that will cover a variety of topics. By working closely with partners (such as real estate agents, home inspectors, and the UW-Eau Claire Student Senate) we will be able to distribute the booklet to new homeowners and tenants during the homebuying and rental processes.

This project focuses on increasing environmental health literacy regarding prevention-based strategies to address radon, drinking water, private onsite wastewater treatment system (POWTS) maintenance, indoor air quality, weatherization, pest control, lead hazards, carbon monoxide, along with other public health and safety topics. Health equity considerations will be made throughout the program to best serve and connect with Eau Claire County residents, such as evaluation of reading level, multi-language outreach, focus groups, and ECCCHD staff participation at multi-cultural outreach events.

Budget Implication:

Funding received will be used to support staff time (0.07 FTE Environmental Health Specialist, 0.02 FTE Microbiologist), educational marketing materials, printing, and translation services.

Staff recommendation:

Approve acceptance of the SEP – Increasing Tenant and Homeowner Environmental Health Literacy award for \$15,000 which runs through September 30, 2025.

Prepared by Nicole Kragness, Regulation and Licensing Division Manager



Information Sheet – 04/23/2024 Board of Health Meeting

Agenda Item 5.a

Annual Report

Our 2023 Annual Report Summary has been released to the public and is available to read [on our website here](#). The report is also being shared with the Eau Claire County Board, Eau Claire City Council, municipal leadership countywide, certain community stakeholders, regional state legislators, and Health Department staff. The report is a snapshot of our 2023 work and accomplishments. It includes data, stories, photos, and insights about the public health work that happens every day around our county. Among other programs and projects, you'll hear about improvements in our well water testing program; progress of the Medical Reserve Corps volunteer unit we facilitate; a new sexual health program offered by our Family Planning Clinic that's filling gaps in the county; and much more. We're proud to highlight the work of our team and our community partners from 2023.

Board of Health Meeting 4/24/24

Agenda Item 5.b

Eau Claire City-County Health Department Report to the Board of Health

Saving the Environment, One Bag at a Time!

There are many places throughout our communities that will collect these bags and then are made into plastic benches. If we all chip in and do our part, we can help in our own way! Health Department staff now have a drop off spot for plastic bags. Once the box is full it will be taken to one of the drop off locations throughout town. Festival Foods has outdoor bins available, Robbes in Strum for ES Schools Cardinal Manufacturing program, Osseo Fitness Center for the school Tech building and of course Walmart. The picture shows how many bags we collected in the first month.



Environmental Sciences – New Team Member

Stevie Harper recently joined the team as an Environmental Health Aide. Stevie is a UWEC student majoring in Environmental Public Health. As part of their role in the laboratory, Stevie will be assisting with beach monitoring and sampling, pool sampling, mosquito trapping, and tick dragging, as well as associated program education and outreach events. Welcome Stevie! We are very excited to have them join our team!

Respiratory Update

Reports of hospitalizations for Influenza, COVID-19, and RSV have declined significantly as the respiratory illness levels decrease across the nation, state, and western region. As of 4/15/2024, the number of influenza-associated hospitalizations in EC County residents this respiratory season is 76, the number of COVID-19-associated hospitalizations is 117 and the number of RSV-associated hospitalizations is 35.

Mobile Food Establishment Presentation

On Saturday, March 23rd, Alyssa Streveler and Valerie Reiter presented information and answered questions for 40 participants at Food Truck Workshop – Profitability for your Mobile Food Business. This event was hosted by the Hmong Wisconsin Chamber of Commerce and helped participants learn about starting a mobile food business, investing and marketing, and how to apply the food code and licensing requirements. Interpretation services in Hmong and Spanish were available for participants.

Regulation and Licensing – Establishment Renewals Are Being Sent

All licensed establishments in Eau Claire County are required to renew their license by July 1, 2024 to operate. This includes all facilities: restaurants, grocery stores, pools, body art, hotels/motels, tourist rooming houses, manufactured home communities, food trucks, campgrounds, and recreational education camps. Renewals are sent out before May 1st, allowing time for operators to receive the invoices, ask questions if needed, and pay their license fee by June 30th to operate in the next licensing period. Our Regs and Licensing team works closely with Finance to track who has and has not paid weekly. Inspectors then reach out to facilities via email, phone, text, and an on-site visit by June 30th to ensure payment is made to avoid penalties. Facilities that do not pay their renewals by June 30th are then charged a late fee. Continued operation without payment results in additional enforcement including operating with a license fee and suspension of licenses.

Measles Preparedness Update

As of April 11, 2024, a total of 121 measles cases were reported by 18 CDC jurisdictions: Arizona, California, Florida, Georgia, Illinois (61 of the 121 cases have been in Chicago), Indiana, Louisiana, Maryland, Michigan, Minnesota, Missouri, New Jersey, New York City, New York State, Ohio, Pennsylvania, Virginia, and Washington.

There have been 7 outbreaks (defined as 3 or more related cases) reported in 2024, and 71% of cases (86 of 121) are outbreak-associated. For comparison, 4 outbreaks were reported during all of 2023 and 48% of cases (28 of 58) were outbreak-associated.

With this increased level of U.S. activity, the Communicable Disease team and the Emergency Preparedness Coordinator have been meeting to prepare for potential measles cases in our county. We have begun

- discussions with Simple Traditions Clinic in Augusta as they would be key partners in helping protect our Plain community, which has low measles vaccination rates.
- outreach to schools to ensure they have situational awareness and begin outreach to students without documented measles immunity.
- connecting with healthcare partners to assess vaccine availability in our community.

Individuals, including students, who are not up to date on vaccinations have 72 hours post exposure to receive a vaccination that may prevent disease. We know that neither EC County nor Wisconsin is at the protective level of herd immunity, which for measles vaccination is 95%. Herd immunity is the percentage of the population that needs to be immune to stop the spread. See data below.

Eau Claire County MMR vaccination benchmark, 2022-2024 Q1

Age Group (Benchmark)	2022	2023	2024 Q1
24-Month (1 dose MMR)	80%	81%	74%
5-6 Years (2 or more doses MMR)	75%	75%	72%
5-18 Years (2 or more doses MMR)	80%	82%	82%

Wisconsin MMR vaccination benchmark, 2022-2023

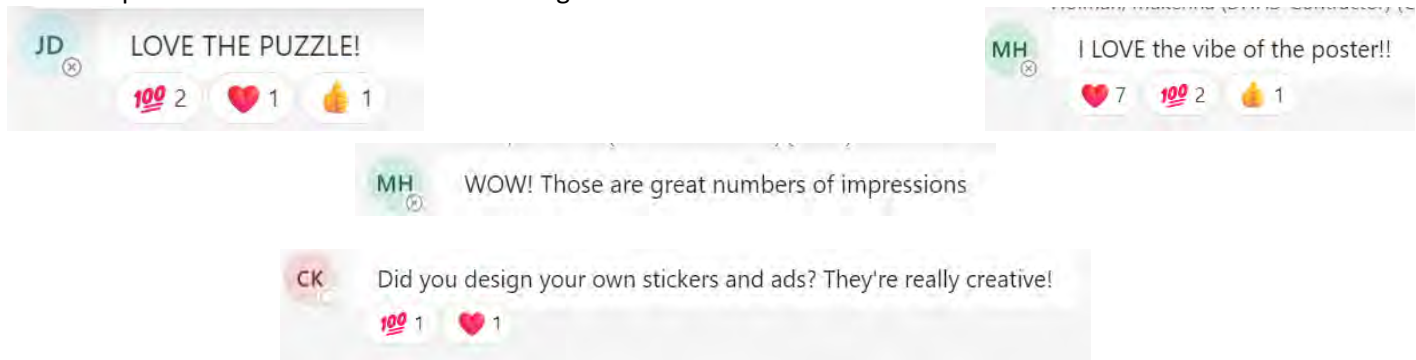
Age Group (Benchmark)	2022	2023
24-Month (1 dose MMR)	82%	82%
5-6 Years (2 or more doses MMR)	74%	74%
5-18 Years (2 or more doses MMR)	81%	83%

Immunization

Two communicable disease staff attended the 2024 Spring Immunize Wisconsin Conference. This conference was dedicated to enhancing the uptake of vaccinations, bolstering confidence in vaccines, and effectively combating the spread of misinformation related to vaccines for preventable diseases. Topics covered a variety of areas including the current landscape of immunizations in Wisconsin, sensory friendly immunizations, the Wisconsin Immunization Registry, strategies for rebuilding community trust post COVID-19, and leveraging multi-level partnerships for immunization outreach.

Reproductive Health

On Thursday, April 11th, Gina Schemenauer and Anni Vitriago presented to nearly 100 attendees on the CDC Mpox Crisis Virtual Recipient Meeting about the creative communication and outreach strategies Eau Claire Health Department has used with their MPOX funding. We highlighted partnerships such as with UWEC, Vivent Health, Family Support Center and more. We also showcased outreach items we created like our MPOX crossword puzzle, dating app ads and stickers. See examples and comments from the meeting below.





Grindr

- Full-screen interstitial - 320x480
- Shown when users tap on the 1st profile in the cascade

Budget - \$491 (~\$16/day), Ran for 4 weeks

- Avg. 1092 daily impressions, 95 clicks daily
- Total 32,762 impressions, 2835 clicks)
- CTR = 9%

ADD THE MPOX VAX TO YOUR TRAVEL LIST.

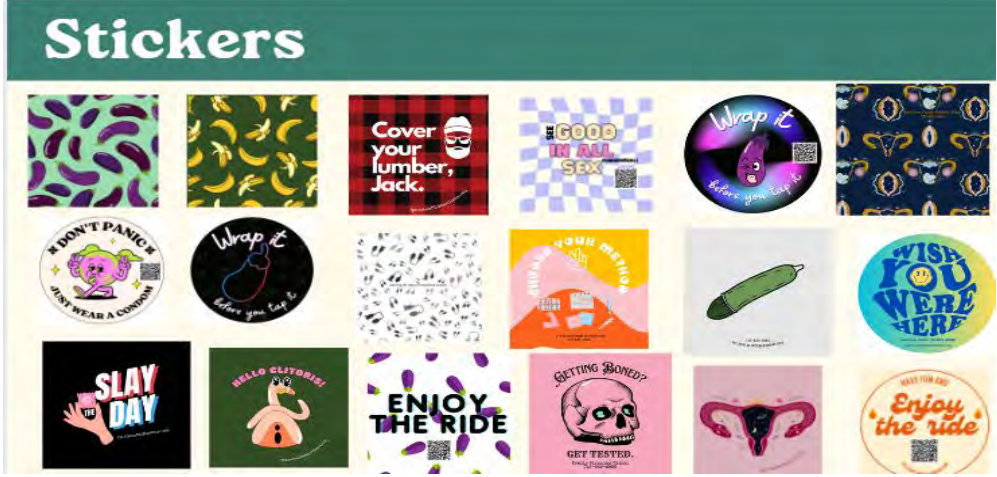
RESERVATIONS?
Check

CONDOMS & LUBE?
Check

MPOX VAX SHOTS?
Double check

Tap for more information

Eau Claire County Health Department



Reproductive Health

The Family Planning Clinic is working with a new OB/GYN consultant through WI DHS RHFP program. Dr. Laura Jaques, is a UW Health OB/GYN, that will be precepting and consulting with Family Planning Clinic providers for colposcopies and Long Acting Reversible Contraceptives (LARC). She has precepted one colposcopy in the clinic so far and the staff look forward to continuing this collaboration. Dr. Jacques also will be facilitating monthly colposcopy and LARC case conferences for providers across Wisconsin.

Governor Signs New State Legislative District Maps

The 2024 State Legislative elections will have new districts. There are impacts to the maps in our county. Information is below on the new legislative districts. We will be working to educate elected officials about local public health.

- Now Includes 2024 Maps [Wisconsin Legislative District Viewer](#)
- [Milwaukee Journal Article](#) Districts Likely to Change Party Control

Wisconsin Counties Association Opioid Abatement Summit

On March 20th, Peggy O'Halloran represented the health department and Eau Claire County at the WCA Opioid Abatement Summit in Wisconsin Rapids. The summit included an update on opioid settlements and reporting requirements, information about programs funded with opioid settlement dollars at the state level through the Wisconsin DHS, and an overview of the WCA opioid website and the resources and information available on the site. Information provided at the summit supports us at the county level as we work with other departments and agencies to allocate opioid settlement dollars awarded in Eau Claire County. For more information about the opioid settlement in Wisconsin, visit: [Home - Wis Opioid Abatement](#)

Little Recovery Book

Community Health Promotion staff worked with the Eau Claire Health Alliance Substance Misuse Action Team alcohol workgroup to create the Little Recovery Book. The team created the book to meet a Community Health Improvement Plan strategy to reduce barriers to treatment and support services. The book describes many different paths available to reducing substance use and includes links to local providers. Business cards, flyers, and removable vinyl stickers are available to help promote the online version of the Little Recovery Book.

The Little Recovery Book is available on the [ECHA website](#). If you would like printed copies to distribute at your organization, please contact [Alison Harder](#).



Data Visualization Training

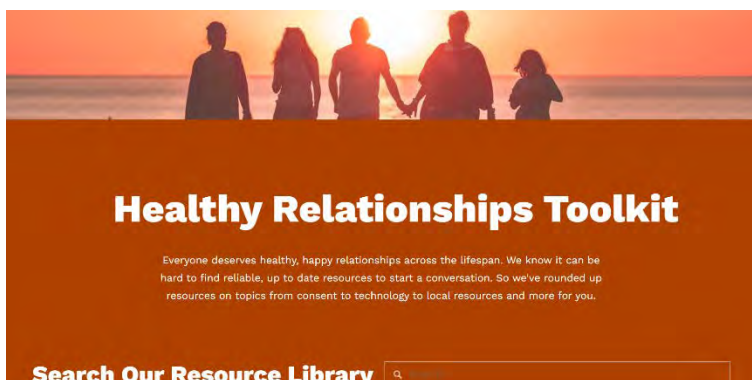
On Tuesday, April 2nd, a group of health department staff and 30 community partners attended an in-person day-long data visualization training by Ann K. Emery. The goal of the training was to align Eau Claire city and county partners who work in serving youth and analyzing data to improve community wellbeing to have a shared language and templates for sharing technical data with non-technical audiences in a way that is clear, compelling, and oriented for action. Attendees learned best practices for clear representation of graphed data, novel chart types, optimizing slide decks and reports for comprehension and accessibility, and many other topics. Ann has served as a consultant to several federal government departments, including the CDC, numerous state and local health departments, and several international organizations. The training was sponsored by the Maternal Child Health Equity Grant that was awarded to the Health Department and partners in January 2023.



Healthy Relationship Promotion

Health Department staff worked with the Health Relationships Action Team to develop the newly updated [Healthy Relationships Toolkit](#), now live on the Eau Claire Health Alliance website.

Strong and healthy relationships are empowering, supportive, and comforting. This toolkit assembles resources for teens and adults to consult when exploring, teaching, or talking about healthy relationship behaviors. This toolkit includes relationship topics like consent, boundaries, online safety, stalking, local resources and more. The new toolkit can be sorted by topic, age group and type of resource. This toolkit can also help adults start tough conversations with youth around healthy or unhealthy relationships, building resilience in youth, and creating trusted adults in the community.



Augusta WIC Clinic – New Location

Beginning in March 2024 our WIC satellite clinic location changed to the Little Beavers Early Learning Center, the newest childcare facility in Augusta. We had been holding monthly clinics at the Lions Hall in Augusta and we are so grateful that they opened their space to us while we waited for the childcare center to open. We are excited about our new site as it is in direct alignment with the population that WIC serves.



Nurse-Family Partnership team attends Fulfilling the Promise Conference

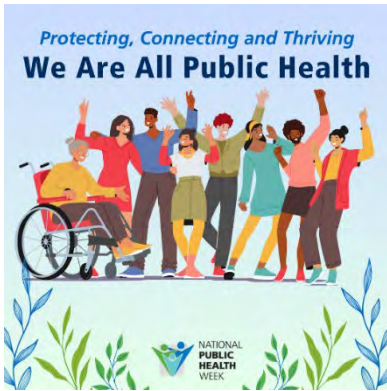
Many of our Nurse-Family Partnership team members attended the Fulfilling the Promise Conference in March. The conference was held at the Wilderness in Wisconsin Dells and this year’s theme was Nourish to Flourish. The conference was filled with great sessions on Unconscious Bias, Transforming your Mindset, Including Fathers in Home Visiting, Growing Connections (within your community, and Empowering Parent Leaders along with many other topics. The team had a wonderful time and learned lots. Below is a photo of ECCCHD attendees: Jill Bauer, Beth Draeger, Josie Knauber, Bev Walden, Jenny Price, and Hannah Buelow.



WIC attends National WIC Association conference in Chicago, IL

Sarah Nix, WIC Team Coordinator and Beth Draeger, Healthy Beginnings Division Manager attended the National WIC Association’s annual conference in Chicago, IL April 6-10. This year’s theme was WIC Since 1974 – a Retro Revival. This year WIC celebrates its 50th anniversary and Sarah & Beth had the great pleasure of meeting Dr. David Paige (affectionately known as the Grandfather of WIC) who was the founder of the first WIC program in 1974 (shown below with Sarah and Beth). Sessions were informative and were categorized into tracks of Technology & Innovation, Research, Data & Management, Workforce Development, Community Partnership & Outreach, Health Equity and Breastfeeding & Nutrition. There were also opportunities to network with colleagues from across our state as well as the entire nation. Shown are Sarah and Beth with fellow Wisconsin attendees.





National Public Health Week (April 1st-7th)

During this week every year, we took time to celebrate our team and all the great work we do day in and day out to help improve our community’s health. We also focus on public messaging to give them a broader view of the work we do at the health department and understand the importance of prevention work.

Sarah Dillivan-Pospisil, Gina Schemenauer, Janel Hebert and Lieske Giese went to the City Council meeting to accept our National Public Health Week Proclamation. We also had a proclamation at the County Board (and at our Board of Health meeting



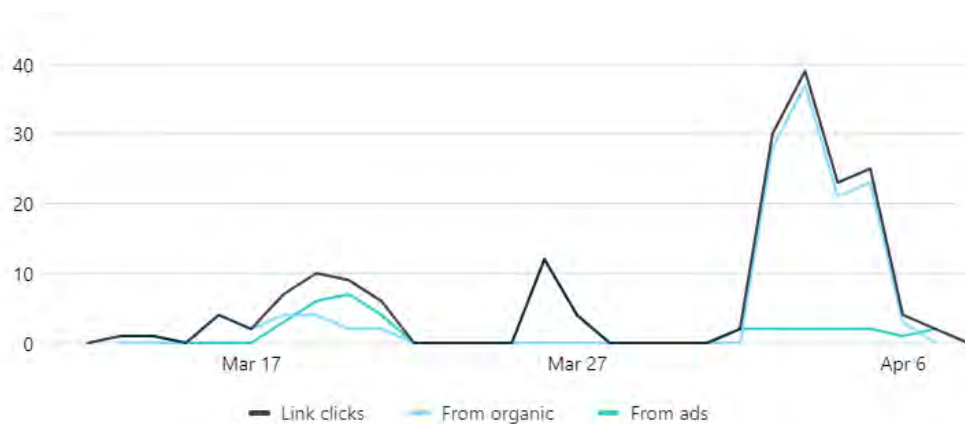
as well).

For staff activities, we hosted a book club, mindfulness session, exercise class, trivia and decorated our break room with items that depicted our work in the past year.

On social media, we used posts and Reels (short videos) to highlight several programs, including the WIC program, volunteering with the Eau Claire Health Alliance and the Eau Claire County Medical Reserve Corps, well water testing, housing inspections, the harm reduction vending machine, HIV prep services, Wisconsin Well Woman Program, and Shaping Destiny, a video created by Mental Health Matters about adverse childhood experiences and the importance of building youth resilience.

Our NPHW social media campaign succeeded in driving more people in our community to interact with public health information. During that week (April 1-7), we saw a significant increase in the number of people who clicked on our website link from a Facebook post (see figure below, which shows the number of people who clicked a link in one of our Facebook posts in the last 28 days). We had 125 link clicks that week, compared to an average of 73 per week in March.

Figure 1: Source: Facebook/Meta



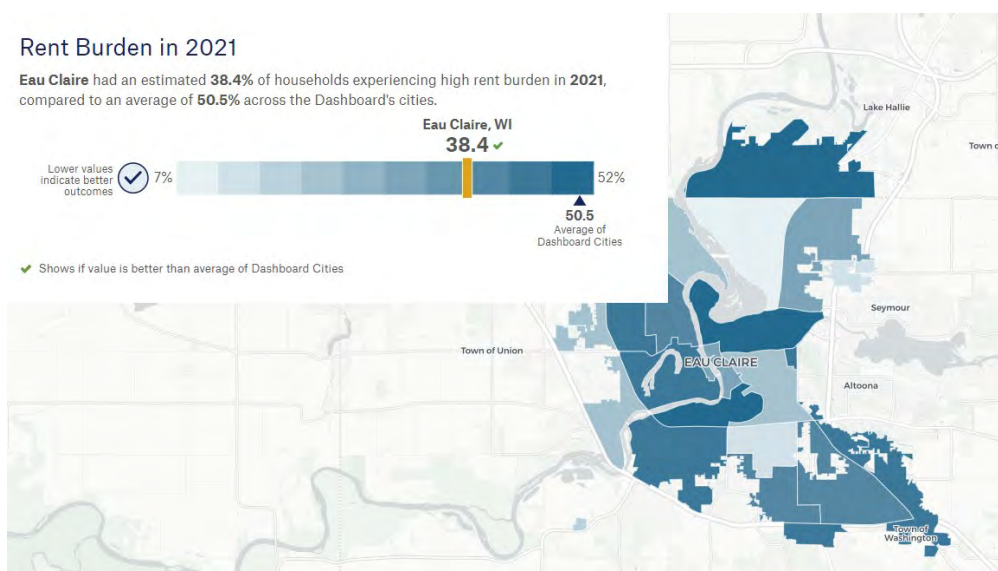
PFAS Updates

The US Environmental Protection Agency (EPA) announced new, lower enforceable federal standard for per- and polyfluoroalkyl substances (PFAS) in drinking water. The current enforceable standard in Wisconsin is 70 parts per trillion (ppt) and it will drop to 4 ppt. As part of this change, the DNR will formally request that the Wisconsin Department of Health Services (DHS) update their health-based recommendations for the six PFAS included in EPA’s finalized MCLs to account for new scientific findings. Wisconsin DHS anticipates their updated recommendations will be available during the second half of 2024. Our health department team is working closely with DHS on this EPA change and implications for drinking water both in private wells and public water supplies. PFAS, as described by EPA, are a group of human-made chemicals used for decades in numerous products, including non-stick cookware, fast food wrappers, stain-resistant sprays and certain types of firefighting foam. These contaminants have made their way into the environment in a variety of ways, including spills of PFAS-containing materials, discharges of wastewater that contain PFAS from treatment plants and use of certain types of firefighting foams. PFAS are known to accumulate in fish and wildlife tissues as well as in the human body, posing several risks to human health. [You can find more information about actions to take to reduce your exposure to PFAS on the DHS website.](#) There will be a period of adjustment to the new regulations, as explained in the EPA’s press release, which reads: “The current enforceable standard of 70 ppt for PFOA and PFOS in

public drinking water will remain in effect until the DNR completes rulemaking to comply with the EPA’s drinking water standards.

Invest Health Grant

The Health Department wrote a grant and is of a local collaboration that was recently awarded a \$75,000 grant to help a cross-sector Eau Claire team use data to understand and improve local health. Due to funding requirements, the grant fiscal agent is not the department but one of our partners. The grant focuses on helping us implement land-use and community development strategies that level the playing field for our residents. Other partners on the team are the Eau Claire Area Economic Development Corporation (EDC), the City of Eau Claire, and UWEC. This project also involves the opportunity to work with other cities across the US to apply for funding for learning exchanges on topics related to data, housing, inclusion, and facilitation of meaningful resident engagement. Take a look at Invest Health’s City Dashboard, available here: [City Health Dashboard](#). This is a free online data and mapping resource with community-level health, social, and economic metrics that can be used to help guide discussions of local health, land use decisions, and cross-community learning. A full press release is available here: [Cross-sector Invest Health Teams Awarded \\$75K to Advance Health Equity Work Through the City Health Dashboard Data Challenge - Invest Health](#) Pictured below is one graph from the Dashboard that shows the percent of residents by Eau Claire neighborhood who are "rent burdened" (meaning they pay more than 30 percent of their income on housing costs).



Information Sheet – 04/24/2024 Board of Health Meeting

Agenda Item 5.c

HSHS/Prevea Update

Health Department Update on HSHS/Prevea Closures:

Foundational Public Health Service: Access to & Linkage with Care

- Provide timely, statewide, and locally relevant, complete, and accurate information to the health care system and community on access and linkage to clinical care (including behavioral health), healthcare system access, quality, and cost.

Foundational Public Health Services



February 2022

Resources/Updates:

[HSHS/Prevea Recovery Task Force - Eau Claire Area Chamber of Commerce \(eauclairechamber.org\)](http://eauclairechamber.org)

- Prevea data: [P7vn3omp \(growthzoneapp.com\)](https://growthzoneapp.com)
- HSHS data: [pQVe2njP \(growthzoneapp.com\)](https://growthzoneapp.com)

['An actionable failure': City attorney calls on DHS to investigate HSHS and its CEO | HSHS and Prevea Closure | wqow.com](http://wqow.com)

[Secretary Office Letterhead \(govdelivery.com\)](http://govdelivery.com)

[Gov. Evers Approves Bill Securing \\$15 Million in Crisis Response Resources to Support Healthcare Access in Western Wisconsin After Recent Hospital Closure Announcements \(weau.com\)](http://weau.com)

[Press Release: Gov. Evers, Members of Evers Administration Meet with Eau Claire Leaders to Support Regional Healthcare Workforce Following HSHS and Prevea Closures \(govdelivery.com\)](http://govdelivery.com)

Eau Claire Health Watch Coalition [HealthWatch Wisconsin \(safetyweb.org\)](http://safetyweb.org)

HealthWatch Coalition Access to Care report: [638483631643170000 \(eauclairewi.gov\)](http://eauclairewi.gov)



**Fact Sheet – 4/24/2024 Board of Health Meeting
Agenda Item 5.d
Preliminary 2023 Year-End Financial Reports**

Attached are preliminary year-end financial reports for 2023. We are in the process of the audit and adjustments may still be made based on this. However, we do not anticipate any major changes at this time. The year-end financial reports are generally finalized in June and presented to the Board of Health in July for final approval and allocation to the Fund Balance accounts.

Our 2023 adopted budget was \$7.8 million, and our revised budget was \$8.9 million due to new grants and contract changes we received throughout the year. The Revenue and Expense Statement indicates \$9,064,923 in revenue, primarily from federal grants, state grants, and City/County property tax levy. The Revenue and Expense Statement also indicates \$8,867,903 in expenses, primarily from personnel costs. Our preliminary report shows a \$197,020 increase in fund balance.

The increase in fund balance is mainly related to staff who normally charge to tax levy were instead charging to COVID-19 related grants, other new grants, staff vacancies, and unpaid leaves.

**Eau Claire City-County Health Department
Balance Sheet
As of December 31, 2023**

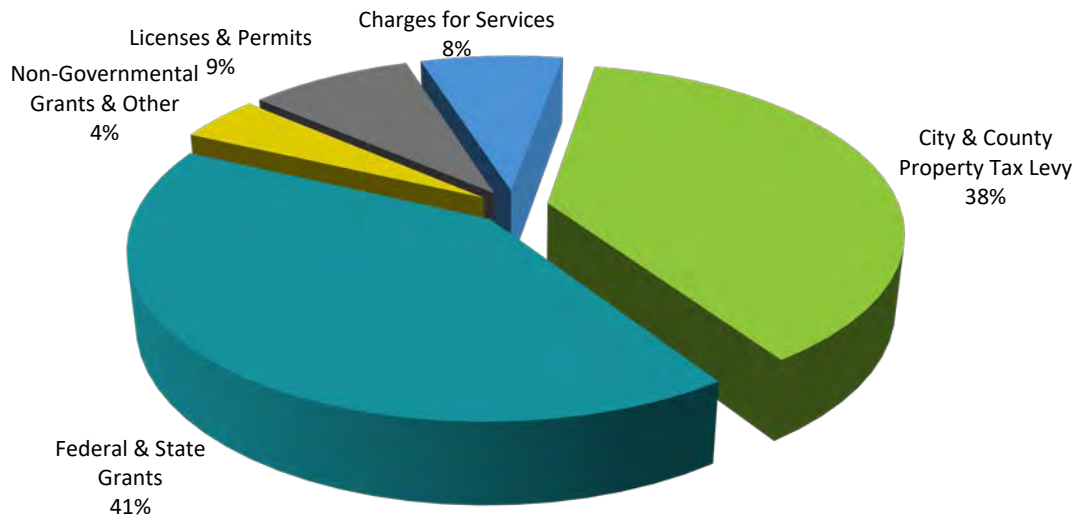
Assets	Account Balance	Change from Prior Quarter	Change from Prior Year
Cash and Investments <i>(Cash in bank , petty cash, gift cards)</i>	\$ 2,362,593	\$ (710,689)	\$ 519,506
Accounts Receivables <i>(Bills outstanding non government)</i>	\$ 71,401	\$ 8,091	\$ 2,490
Due from other governments <i>(Bills outstanding government)</i>	\$ 819,226	\$ 734,432	\$ (146,495)
Taxes Receivable	\$ 33,310	\$ 33,310	\$ 4,250
Prepayments <i>(Payments made in advance i.e. health, life insurance)</i>	\$ 147,137	\$ 32,719	\$ 13,747
Inventories <i>(Radon kits)</i>	\$ 2,453	\$ (4,787)	\$ (250)
Allowance for Doubtful Accts <i>(Estimate of uncollectables)</i>	\$ (181)	\$ (181)	\$ (181)
Total Assets	\$ 3,435,938	\$ 92,895	\$ 393,066
Liabilities			
Accounts Payable <i>(Amts owed incl. payroll taxes, health, life)</i>	\$ 321,233	\$ 196,848	\$ 58,227
Accrued Liabilities <i>(Accrued Payroll done at year end)</i>	\$ 67,773	\$ 64,539	\$ 6,236
Due to other governments <i>(Sales tax, state license fees)</i>	\$ 28,139	\$ (4,645)	\$ 5,021
Deferred Inflows <i>(Amts billed-not received, advance on contracts)</i>	\$ 355,619	\$ 207,512	\$ 126,562
Total Liabilities	\$ 772,764	\$ 464,254	\$ 196,047
Fund Balances			
Fund Balance <i>(Restricted, non-spendable prepayments, inventories)</i>	\$ 2,663,175	\$ 197,020	\$ 197,020
Control Accounts <i>(Current year revenue over (under) expense)</i>	\$ -	\$ (568,379)	\$ -
Total Fund Balances	\$ 2,663,175	\$ (371,359)	\$ 197,020
Total Liabilities and Fund Balances	\$ 3,435,938	\$ 92,895	\$ 393,066

	Balance
<i>Non-Spendable Pre Payment</i>	\$ 133,390
<i>Non-Spendable Inventory</i>	\$ 2,702
<i>Restricted to Particular Projects</i>	\$ 116,028
<i>Restricted - Capital Purchases</i>	\$ 400,000
<i>Restrctied - Working Capital</i>	\$ 1,559,034
<i>Restricted - Special Projects</i>	\$ 255,000
Fund Balance as of 12/31/22	\$ 2,466,155

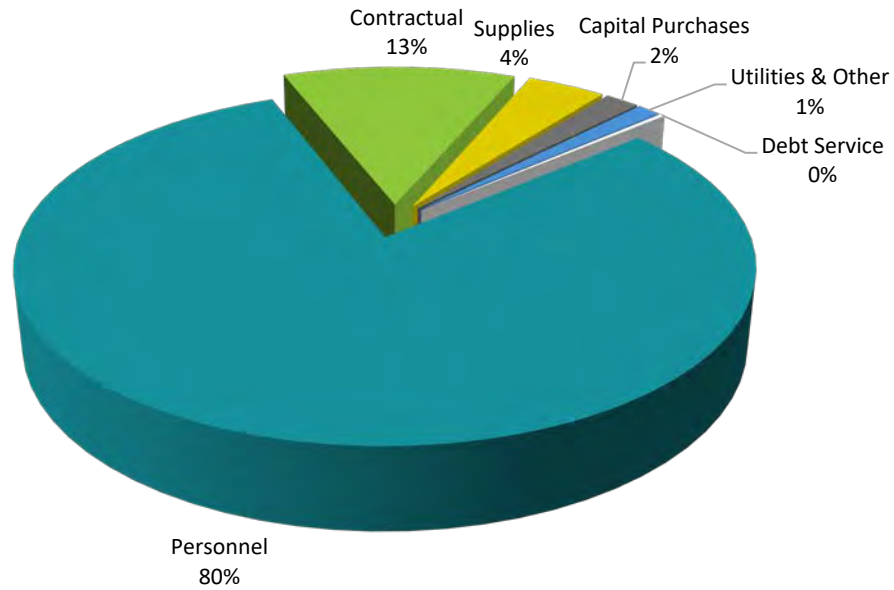
**Eau Claire City-County Health Department
Revenue and Expense Statement
As of December 31, 2023**

Revenues	Adoped Budget	Revised Budget	YTD Actual	% of Bdgt	Change from Prior Quarter	Change from Prior Year
Intergovernmental <i>(Federal and state grants)</i>	\$ 2,313,300	\$ 3,723,900	\$ 3,658,597	98.2%	\$ 1,516,134	\$ (172,927)
Licenses & Permits <i>(Lodging, restaurant, sanitary etc.)</i>	\$ 713,700	\$ 713,700	\$ 792,622	111.1%	\$ 50,596	\$ 77,579
Fines & Forfeitures	\$ -	\$ -	\$ 500	0.0%	\$ -	\$ (536)
Charges for Services <i>(Water tests, vaccinations, inspections etc.)</i>	\$ 144,300	\$ 144,300	\$ 211,389	146.5%	\$ 52,574	\$ 42,163
Charges for Services - Intergov <i>(Medicaid, schools, County tax)</i>	\$ 1,672,000	\$ 1,829,200	\$ 1,864,052	101.9%	\$ 460,398	\$ 232,087
Misc revenue <i>(Gifts, reimbursements, non-governmental grants)</i>	\$ 270,300	\$ 367,100	\$ 378,439	103.1%	\$ (19,385)	\$ (63,275)
Other Financing Sources <i>(Taxes from City, CDBG revenue)</i>	\$ 2,150,100	\$ 2,152,800	\$ 2,159,325	100.3%	\$ 25,563	\$ 64,870
Other Budgeted Receipts <i>(Budget only-use of fund balance)</i>	\$ 549,600	\$ -	\$ -	0.0%	\$ -	\$ -
Total Revenues	\$ 7,813,300	\$ 8,931,000	\$ 9,064,923	101.5%	\$ 2,085,882	\$ 179,961
Expenses						
Personnel <i>(Payroll, benefits, auto allowance)</i>	\$ 6,765,700	\$ 7,082,000	\$ 7,111,820	100.4%	\$ 2,023,531	\$ 481,573
Contractual Services <i>(Postage, software, rent, advertising, audit, etc.)</i>	\$ 649,700	\$ 1,165,700	\$ 1,090,967	93.6%	\$ 271,372	\$ (463,531)
Utilities <i>(Phones, garbage)</i>	\$ 49,900	\$ 53,500	\$ 54,675	102.2%	\$ 15,862	\$ 1,576
Fixed Charges <i>(License & Permits, Workers Comp)</i>	\$ 25,900	\$ 17,800	\$ 17,368	97.6%	\$ 1,171	\$ (3,330)
Supplies <i>(Office, lab, medical, equipment, gift cards, etc.)</i>	\$ 235,300	\$ 346,600	\$ 367,121	105.9%	\$ 121,406	\$ 47,320
Contributions & Other Payments <i>(Pymts to other organizations)</i>	\$ 12,000	\$ 35,600	\$ 39,717	111.6%	\$ 8,351	\$ 25,304
Capital Purchases <i>(Long term purchases over \$5,000)</i>	\$ 50,000	\$ 205,000	\$ 161,463	78.8%	\$ 15,550	\$ 140,513
Other Financing Uses <i>(Debt service for debt on unfunded pension)</i>	\$ 24,800	\$ 24,800	\$ 24,773	99.9%	\$ -	\$ (610)
Total Expenses	\$ 7,813,300	\$ 8,931,000	\$ 8,867,903	99.3%	\$ 2,457,242	\$ 228,815
Net Revenue Over / (Under) Expenses			\$ 197,020		\$ (371,359)	\$ (48,854)

2023 Estimated Revenues



2023 Estimated Expenses



Information Sheet – 04/24/2024 Board of Health Meeting

Agenda Item 5.e

Overview on Public Health Foundational Services

What are the Foundational Public Health Services?

- [The Foundational Public Health Services - Public Health Accreditation Board \(phaboard.org\)](#)
- [FPHS-Factsheet-2022.pdf \(phaboard.org\)](#)
- [FPHS-Operational-Definitions.pdf \(phaboard.org\)](#)

Why are we looking at these locally?

- National PHAB accreditation
- DHS 140 Rule requirements
- ECCCHD Strategic Plan

Goal #2: Strengthen our workforce and operational strategies to support quality programs and partnerships.

- Activity 2.1.1 - By June 2024, assess current and future workforce needs to provide Foundational Public Health capabilities and services.
- Activity 2.3.4 - By June 2024, review current status of revenue/expense related to Foundational Public Health capabilities and services (in conjunction with Statewide PH Forward efforts).

What is happening at the national level?

- CDC Public Health Infrastructure Grant
- National organization focus – PHAB, NACCHO, NALBOH, ASTHO

What is happening at the State and Local level?

- WI DPH Public Health Infrastructure Grant
- WALHDAB PH Forward focus on workforce, funding, legal issues
- Costing and Capacity Survey
- Workforce Survey

Foundational Public Health Services



Health departments have a fundamental responsibility to provide public health protections and services in a number of areas, including: preventing the spread of communicable disease; ensuring food, air, and water quality are safe; supporting maternal and child health; improving access to clinical care services; and preventing chronic disease and injury. In addition, public health departments provide local protections and services specific to their community's needs.

Health departments serve their communities 24/7 and require access to a wide range of critical data sources, robust laboratory capacity, preparedness and policy planning capacity, partnerships with community, and expert staff to leverage them in support of public health protections.

The Foundational Public Health Services framework outlines the unique responsibilities of governmental public health and defines a minimum set of Foundational Capabilities and Foundational Areas that must be available in every community.



Community-specific Services are local protections and services that are unique to the needs of a community. These services are essential to that community's health and vary by jurisdiction.

Foundational Areas

Public health programs, or Foundational Areas, are basic public health, topic-specific programs and services aimed at improving the health of the community. The Foundational Areas reflect the minimum level of service that should be available in all communities.

Foundational Capabilities

Public health infrastructure consists of Foundational Capabilities that are the cross-cutting skills and capacities needed to support basic public health protections, programs, and activities key to ensuring community health, well-being and achieving equitable outcomes.

Foundational Capabilities

There are eight Foundational Capabilities that are needed in Public Health Infrastructure.

Assessment & Surveillance

- Ability to collect timely and sufficient foundational data to guide public health planning and decision making at the state and local level, including the personnel and technology that enable collection.
- Ability to collect, access, analyze, interpret, and use data from a variety of sources including granular data and data disaggregated by geography (e.g., census tract, zip code), sub-populations, race, ethnicity, and other variables that fully describe the health and well-being of a community and the factors that influence health.
- Ability to assess and analyze disparities and inequities in the distribution of disease and social determinants of health, that contribute to higher health risks and poorer health outcomes.
- Ability to prioritize and respond to data requests and translate data into information and reports that are valid, complete, statistically accurate, and accessible to the intended audiences.
- Ability to conduct a collaborative community or statewide health assessment and identify health priorities arising from that assessment, including analysis of root causes of health disparities and inequities.
- Ability to access 24/7 laboratory resources capable of providing rapid detection.
- Ability to participate in or support surveillance systems to rapidly detect emerging health issues and threats.
- Ability to work with community partners to collect, report and use public health data that is relevant to communities experiencing health inequities or ability to support community-led data processes.

Community Partnership Development

- Ability to create, convene, support, and sustain strategic, non-program specific relationships with key community groups or organizations representing populations experiencing health disparities or inequities; private businesses and health care organizations; relevant

federal, Tribal, state, and local government agencies; elected and non-elected officials.

- Ability to leverage and engage partnerships and community in equity solutions.
- Ability to establish and maintain trust with and authentically engage community members and populations most impacted by inequities in key public health decision-making and use community-driven approaches.
- Ability to convene across governmental agencies, such as departments of transportation, aging, substance abuse/mental health, education, planning and development, or others, to promote health, prevent disease, and protect community members of the health department's jurisdiction.
- Ability to engage members of the community and multi-sector partners in a community health improvement process that draws from community health assessment data and establishes a plan for addressing priorities. The community health improvement plan can serve as the basis for coordination of effort and resources across partners.

Equity

- Ability to strategically address social and structural determinants of health through policy, programs, and services as a necessary pathway to achieve equity.
- Ability to systematically integrate equity into each aspect of the FPHS, strategic priorities, and include equity-related accountability metrics into all programs and services.
- Ability to work collaboratively across the department and the community to build support for and foster a shared understanding of the critical importance of equity to achieve community health and well-being.
- Ability to develop and support staff to address equity.
- Ability to create a shared understanding of what creates health including structural and systemic factors that produce and reproduce inequities.

Organizational Competencies

- **Leadership & Governance:** Ability to lead internal and external stakeholders to consensus, with movement to action, and to serve as the face of governmental public health in the department's jurisdiction. Ability to directly engage in health policy development, discussion, and adoption with local, state, and national policymakers, and to define a strategic direction for public health initiatives, including the advancement of equity. Ability to prioritize and implement diversity, equity, and inclusion within the organization. Ability to engage with appropriate governing entities about the department's public health legal authorities and what new laws and policies might be needed. Ability to ensure diverse representation on public health boards and councils.
- **Information Technology Services, including Privacy & Security:** Ability to maintain and procure the hardware and software needed to access electronic health information to support the department's operations and analysis of health data. Ability to support, use, and maintain communication technologies and systems needed to interact with community members. Ability to have the proper systems and controls in place to keep health and human resources data confidential and maintain security of IT systems.
- **Workforce Development & Human Resources:** Ability to develop and maintain a diverse and inclusive workforce with the cross-cutting skills and competencies needed to implement the FPHS effectively and equitably. Ability to manage human resource functions including recruitment, retention, and succession planning; training; and performance review and accountability.
- **Financial Management, Contract, & Procurement Services, including Facilities and Operations:** Ability to establish a budgeting, auditing, billing, and financial system and chart of expense and revenue accounts in compliance with federal, state, and local standards and policies. Ability to secure grants or other funding (governmental and not) and demonstrate compliance with an audit required for the sources of funding utilized. Ability to procure, maintain, and manage safe facilities and efficient operations. Ability to leverage funding and ensure resources are allocated to address equity and social determinants of health.

- **Legal Services & Analysis:** Ability to access and appropriately use legal services in planning, implementing, and enforcing, public health initiatives, including relevant administrative rules and due process

Policy Development and Support

- Ability to serve as a primary and expert resource for establishing, maintaining, and developing basic public health policy recommendations that are evidence-based and grounded in law. This includes researching, analyzing, costing out, and articulating the impact of such policies and rules where appropriate, as well as the ability to organize support for these policies and rules and place them before an entity with the legal authority to adopt them.
- Ability to effectively inform and influence policies being considered by other governmental and non-governmental agencies that can improve the physical, environmental, social, and economic conditions affecting health but are beyond the immediate scope or authority of the governmental public health department.
- Ability to effectively advocate for policies that address social determinants of health, health disparities and equity.
- Ability to issue, promote compliance with or, as mandated, enforce compliance with public health regulations.

Accountability & Performance Management

- Ability to perform according to accepted business standards in accordance with applicable federal, state, and local laws and policies and assure compliance with national and Public Health Accreditation Board Standards.
- Ability to maintain a performance management system to monitor achievement of organizational objectives.
- Ability to identify and use evidence-based or promising practices when implementing new or revised processes, programs and/or interventions.
- Ability to maintain an organization-wide culture of quality and to use quality improvement tools and methods.
- Ability to create accountability structures and internal and external equity-related metrics to measure the equity impact of a department's efforts and performance.

Emergency Preparedness and Response

- Ability to develop, exercise, and maintain preparedness and response strategies and plans, in accordance with established guidelines, and to address a range of events including natural or other disasters, communicable disease outbreaks, environmental emergencies, or other events, which may be acute or occur over time.
- Ability to integrate social determinants of health, and actions to address inequities, including ensuring the protection of high-risk populations, into all plans, programs, and services.
- Ability to lead the Emergency Support Function 8 – Public Health & Medical for the county, region, jurisdiction, and state.
- Ability to activate the emergency response personnel and communications systems in the event of a public health crisis; coordinate with federal, state, and local emergency managers and other first responders, and private sector and non-profit partners; and operate within, and as necessary lead, the incident management system.
- Ability to maintain and execute a continuity of operations plan that includes a plan to access financial resources to execute an emergency and recovery response.
- Ability to establish and promote basic, ongoing community readiness, resilience, and preparedness by enabling the public to take necessary action before, during, or after a disaster, emergency, or public health event.
- Ability to issue and enforce emergency health orders.
- Ability to be notified of and respond to events on a 24/7 basis.
- Ability to access and utilize a Laboratory Response Network (LRN) Reference laboratory for biological agents and an LRN chemical laboratory at a level designated by CDC.

Communications

- Ability to maintain ongoing relations with local and statewide media including the ability to write a press release, conduct a press conference, and use electronic communication tools to interact with the media.
- Ability to effectively use social media to communicate directly with community members.
- Ability to appropriately tailor communications and communications mechanisms for various audiences.
- Ability to write and implement a routine communications plan and develop routine public health communications including to reach communities not traditionally reached through public health channels.
- Ability to develop and implement a risk communication strategy for communicating with the public during a public health crisis or emergency. This includes the ability to provide accurate and timely information and to address misconceptions and misinformation, and to assure information is accessible to and appropriate for all audiences.
- Ability to transmit and receive routine communications to and from the public in an appropriate, timely, and accurate manner, on a 24/7 basis.
- Ability to develop and implement a proactive health education/health communication strategy (distinct from risk communication) that disseminates timely and accurate information to the public designed to encourage actions to promote health in culturally and linguistically appropriate formats for the various communities served, including using electronic communication tools.

Foundational Areas

There are five Foundational Areas, also known as Public Health Programs. Social determinants of health and actions to address health inequities should be integrated throughout all activities.

Communicable Disease Control

- Provide timely, statewide, and locally relevant and accurate information to the health care system and community on communicable diseases and their control.
- Identify statewide and local communicable disease control community partners and their capacities, develop, and implement a prioritized communicable disease control plan, and ability to seek and secure funding for high priority initiatives.
- Receive laboratory reports and other relevant data; conduct disease investigations, including contact tracing and notification; and recognize, identify, and respond to communicable disease outbreaks for notifiable conditions in accordance with local, national, and state mandates and guidelines.
- Assure the availability of partner notification services for newly diagnosed cases of communicable diseases according to Centers for Disease Control and Prevention (CDC) guidelines.
- Assure the appropriate treatment of individuals who have reportable communicable diseases, such as TB, STIs, and HIV in accordance with local and state laws and CDC guidelines.
- Support the recognition of outbreaks and other events of public health significance by assuring capacity for the identification and characterization of the causative agents of disease and their origin, including those that are rare and unusual.
- Coordinate and integrate categorically-funded communicable disease programs and services.

Chronic Disease & Injury Prevention

- Provide timely, statewide, and locally relevant, complete, and accurate information to the health care system and community on chronic disease and injury prevention and control.
- Identify statewide and local chronic disease and injury prevention community partners and their capacities, develop, and implement a prioritized prevention plan, and ability to seek and secure funding for high priority initiatives.

- Reduce statewide and community rates of tobacco use through a program that conforms to standards set by state or local laws and CDC's Office on Smoking and Health, including activities to reduce youth initiation, increase cessation, and reduce secondhand exposure to harmful substances.
- Work actively with statewide and community partners to increase statewide and community rates of healthy eating and active living through a prioritized approach focusing on best and promising practices aligned with national, state, and local guidelines for healthy eating and active living.
- Coordinate and integrate categorically-funded chronic disease and injury prevention programs and services.

Environmental Public Health

- Provide timely, statewide, and locally relevant, complete, and accurate information to the state, health care system, and community on environmental public health threats and health impacts from common environmental or toxic exposures.
- Identify statewide and local community environmental public health partners and their capacities, develop, and implement a prioritized plan, and ability to seek and secure action funding for high priority initiatives.
- Conduct mandated environmental public health laboratory testing, inspections, and oversight to protect food, recreation sites, and drinking water; manage liquid and solid waste streams safely; and identify other public health hazards related to environmental factors in accordance with federal, state, and local laws and regulations.
- Protect workers and the public from chemical and radiation hazards in accordance with federal, state, and local laws and regulations.
- Participate in broad land use planning and sustainable development to encourage decisions that promote positive public health outcomes and resilient communities (e.g., housing and urban development, recreational facilities, transportation systems and climate change).
- Coordinate and integrate categorically-funded environmental public health programs and services.

Maternal, Child and Family Health

- Provide timely, statewide, and locally relevant, complete, and accurate information to the health care system and community on emerging and on-going maternal child health trends.
- Identify local maternal and child health community partners and their capacities; using life course expertise and an understanding of health disparities, develop a prioritized prevention plan; and ability to seek and secure funding for high priority initiatives.
- Identify, disseminate, and promote emerging and evidence-based early interventions in the prenatal and early childhood period that promote lifelong health and positive social-emotional development.
- Assure newborn screening as mandated by a state or local governing body including wraparound services, reporting back, following up, and service engagement activities.
- Coordinate and integrate categorically funded maternal, child, and family health programs and services.

Access to & Linkage with Care

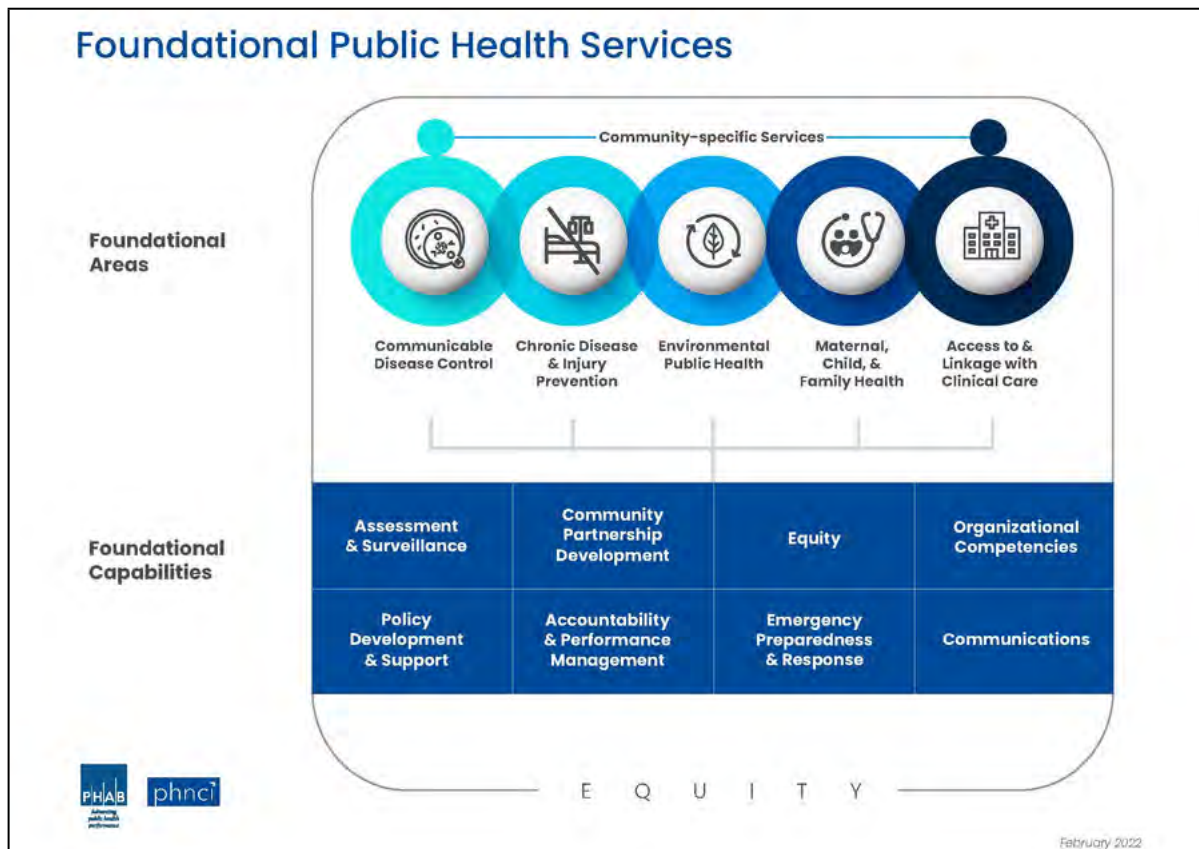
- Provide timely, statewide, and locally relevant, complete, and accurate information to the health care system and community on access and linkage to clinical care (including behavioral health), healthcare system access, quality, and cost.
- Inspect and license healthcare facilities, and license, monitor, and discipline healthcare providers, where applicable.
- In concert with national and statewide groups and local providers of healthcare, identify healthcare partners and competencies, develop prioritized plans for increasing access to health homes and quality health care, and seek funding for high priority policy initiatives.

Foundational Public Health Services

Every day and during times of emergencies, public health departments make the United States a healthier and safer place to live and work. Public health works to ensure basic protections exist, all people are safe in communities, and aims to prevent health threats before they occur. Although responsible for much more, public health prevents the spread of disease and chronic conditions that impact the health status of a community and drive health care spending. Public health departments collaborate with social service and hospital/healthcare providers in response to emergencies, provide regular assistance to their communities, and continuously evolve to meet local needs.

High-performing public health departments use **data-driven, evidence-based practice** to be good stewards of public money and address community priorities. Delivering public health protections in their communities at this level requires a strong foundation of public health infrastructure.

The **Foundational Public Health Services** (FPHS) framework outlines the unique responsibilities of governmental public health and defines a minimum set of Foundational Capabilities and Foundational Areas that must be available in every community.



Implementation

What are the benefits of learning about the FPHS? Understanding the Framework provides opportunities to develop a shared language, collaborate to meet shared goals, and protect the health and well-being of your community.

Public health professionals are using the FPHS to modernize and transform the field, shifting from ways public health may have worked in the past to new strategies to promote health in a community, advance equitable practices, and work across sectors to address social challenges that intersect with public health (e.g., homelessness, food insecurity, gun violence, climate change, transportation, education). Implementing the FPHS often includes infrastructure changes and reimagined way of working. This requires innovation, collaboration, and investment - you are invited to join public health in driving change.

Foundational Public Health Services

A Breakdown of the Foundational Public Health Services

Outside of the public health field, the FPHS may be used to communicate and set clear guidelines for how to keep society healthy. The Framework explains the necessary investments, priorities of services, and provides a roadmap to meet the public health needs of all people in communities across the United States.

Community-specific services vary based on a health department's or community's unique needs and are also supported by the Foundational Capabilities and Foundational Areas. For example, a local health department may provide testing/treatment for a certain sexually transmitted infections and other jurisdictions may not. State and local health department-generated activities, and most resources, are used for the other important programs specific to their jurisdictional needs. These are outside the scope of the FCs and FAs, but still essential to a given jurisdiction.

Foundational Areas (FA) are programs and services that are supported by the public health infrastructure. In the FPHS, this is the minimum that should be available.

Foundational Capabilities (FC) are the cross-cutting skills and capacities needed to support basic public health protections and other programs and activities that are key to ensuring the community's health and achieving equitable health outcomes. When public health professionals talk about infrastructure, they are referring to the FCs.

Equity must be embedded in all public health efforts. Equity is infused in all of the FPHS and is a standalone FC, emphasizing the needed capacities, capabilities, and resources to ensure equity is integrated and intentional in all FPHS.

Looking Forward

Practically put, health departments have to be ready 24/7 to serve their communities. That requires access to a wide range of critical data sources, robust laboratory capacity, preparedness and policy planning capacity, and expert staff to leverage them in support of public health protections. Like all infrastructure, it tends to degrade over time without proactive maintenance and deliberate efforts to upgrade its capabilities as communities grow and evolve.

Evidence suggests many public health departments don't have the dedicated funding needed to build-out and sustain their public health infrastructure. Without them, public health departments simply can't deliver seamless, high-quality protections the public expects. In fact, one recent landmark study estimated a nationwide gap in funding public health infrastructure at \$4.5 billion.¹

In ways large and small, public health departments prevent the spread of disease and bring people together to help communities stay healthy. To continue these activities and respond to new threats, public health needs increased support. **Help protect the health of your community by:**

- Identifying shared goals and strategies to achieve them.
- Meeting with local and state health departments to discuss opportunities to collaborate and support their work.
- Promoting local public health achievements, including accreditation, awards, and additional recognition of excellence.
- Supporting the public health workforce.
- Engaging in conversations about investing in public health infrastructure, policy objectives, and current needs.

¹ Developing a Financing System to Support Public Health Infrastructure, The Public Health Leadership Forum, November 2018

Public Health Infrastructure Grant Year 1 in Review

The Centers for Disease Control and Prevention (CDC) awarded the Strengthening U.S. Public Health Infrastructure, Workforce, and Data Systems Grant (PHI Grant) to the Division of Public Health (DPH) in late 2022. The PHI Grant Leadership Team is now taking a moment to reflect and celebrate its accomplishments during Year 1 of the five-year performance period. This first page provides a high-level summary of the vision and priorities for PHI Grant implementation, while more detailed subject-specific accomplishments are listed on the second.

Public Health Infrastructure Grant Funding Summary <i>as of 1/10/24</i>		
Strategy Area A1 Workforce		
BP1* (12/1/22-11/30/27)	\$43,018,968	
<i>39.2% Pass-through to LHDs</i>	<i>\$16,863,435</i>	5-year allocation
<i>0.8% Pass-through to Tribes</i>	<i>\$344,152</i>	
Strategy Area A2 Foundational Capabilities		
BP1 (12/1/22-11/30/23)	\$1,929,331	Annual allocations dependent
BP2 (12/1/23-11/30/24)	\$3,376,295	upon availability of federal funds
Strategy Area A3 Data Modernization		
Core Data Modernization Initiative (DMI)		
BP1 (12/1/22-11/30/23)	\$648,515	Annual allocations dependent
BP2 (12/1/23-11/30/24)	\$1,300,975	upon availability of federal funds
DMI Acceleration		
BP1 (12/1/22-11/30/27)	\$4,634,704	5-year allocation
Laboratory Data Exchange (LDX)		
BP1 (12/1/22-11/30/27)	\$3,275,238	5-year allocation
GRAND TOTAL		\$58,184,026
* BP1 = Budget Period 1		

Grant vision

Wisconsin’s governmental public health system has consistently ranked at the bottom or near bottom of all states in public health funding for many years¹, which contributes to gaps in our system’s infrastructure. DPH’s vision for the PHI Grant focuses on identifying, quantifying, and addressing these gaps.

Year 1 priorities

- Passing through funding to local and Tribal public health (40% of Strategy Area A1 Workforce funds)
- Conducting baseline assessment of Costing and Capacity and Workforce (two of three components of the baseline overall)
- Recruiting for DPH staff

What comes next: Year 2 priorities

- Supporting local and Tribal health departments in pursuing work plans, providing targeted training and technical assistance based on selected objectives
- Actioning the Costing and Capacity and Workforce Assessment Data, to include determining allocation of Foundational Capabilities innovations dollars within Strategy Area A2 Foundational Capabilities budget
- Conducting the Impact Assessment (third of three components of the baseline overall)

¹ America’s Health Rankings. “Public Health Funding by State.”
https://www.americashealthrankings.org/explore/measures/PH_funding

Overview of PHI Grant Year 1 accomplishments

Staffing

- Currently expecting to fund two or more positions in each of DPH's eight Bureaus and Offices
- Total DPH positions to be PHI Grant-funded (new and existing): 42
 - New positions already filled: 16
 - New positions to be filled: 8

Contracting

- University of Wisconsin Population Health Institute (\$505,000/year): Public health partner coordination, training support
- Wisconsin Association of Local Health Departments and Boards (WALHDAB) (\$349,205): Costing and Capacity Assessment of local health departments (LHDs)
- Wisconsin Primary Health Care Association (\$20,000): Support and coordination of the Public Health and Health Care Coordinating Group
- WALHDAB (\$200,000/year): Support and coordination of Wisconsin Public Health Forward's mission and priority areas

Data modernization

- The DPH Office of Health Informatics (OHI) leads the implementation of Wisconsin's Data Modernization Initiative (DMI) portfolio and that of PHI Grant Strategy Area A3.
- The DMI portfolio is not solely funded by the PHI Grant, thus the following is not a comprehensive depiction of all DMI efforts and accomplishments.
- A3 Core DMI was initially approved but unfunded, then became funded along with two new sub-strategies (DMI Acceleration and Laboratory Data Exchange [LDX], both 5-year allocations) mid-way through Year 1.
- Within A3 Core DMI, OHI kicked off projects related to modernizing the metadata documentation and data request tools and processes.

- Within A3 LDX, OHI designated 100% of the funding to Wisconsin State Laboratory of Hygiene to support their data and information system modernization efforts.
- Within A3 Acceleration, OHI designated funding to efforts surrounding Data Interoperability, Health Equity, and Advanced Analytics projects initiated under other federal grants and in need of sustainability.
- OHI began to recruit for the DMI Program Director with the goal to hire in early 2024.

Assessment and evaluation

- Seventy-seven of 85 LHDs completed a Costing and Capacity Assessment.
- DPH completed phases 1 and 2 of the DPH Costing and Capacity Assessment (identifying staff time and financial resources allocated to Foundational Public Health Services).
- DPH launched the first Wisconsin Public Health Workforce Assessment to explore and quantify the background, strengths, skills, and needs of the Wisconsin governmental public health workforce.

Workforce development

- Workforce development staff leads successfully onboarded six new workforce-focused positions within DPH; this hiring constitutes the formation of an entirely new DPH work unit, the Workforce Development Section.
- Workforce development staff prioritized effective onboarding and orientation of public health employees by overhauling the frameworks, content, and delivery of DPH 101, Public Health 101, and local health officer orientation.
- The Workforce Development Section collaborated across the division to support DPH's strategic planning process and select workforce strategies and focus areas based on staff input.



Fact Sheet – 4/25/2024 Board of Health Meeting

Agenda Item 5.f

Quality Improvement Plan

The Health Department began work on Quality Improvement in 2012 by creating a cross-divisional Quality Improvement (QI) Team. Then in 2014, the department developed and implemented a QI plan to provide a framework to better align QI efforts with the department's strategic plan.

Currently, the QI plan and processes are incorporated into the 2023 – 2025 ECCCHD Strategic Plan and are also a key component of the department's Performance Management Plan. Quality improvement work directly connects to the Department's guiding principle of quality, using data and evidence to provide programs and services that meet the needs of our community. It is critical for our organization to engage in continuous improvement to maintain efficient and effective performance. This is reinforced through the foundational capability measures identified by PHAB for accreditation, of which implementation of quality improvement is a fundamental piece.

The objective of the QI Plan is to provide context and a framework for quality improvement activities at the ECCCHD. It also outlines expectations related to quality improvement for staff at all levels and provides an overview of how to begin a QI project at the department. Additionally, the plan describes how the department will ensure that QI initiatives are sustainable. This includes incorporating them into position descriptions and employee performance evaluations.

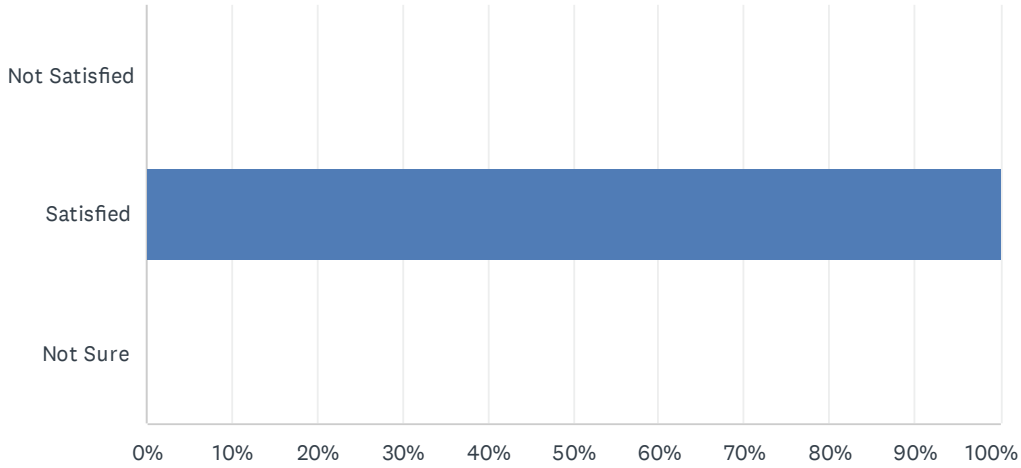
Attached is the table of contents of the QI Plan so you can see the topics included. Full copies of our QI Plan are available upon request.

Quality Improvement Plan Table of Contents

Purpose	1
Culture of Quality Improvement in the Health Department	1
Key Elements	2
Training and Recognition	3
Project Selection and Reporting	3
Quality Improvement Plan Management	4
Communication Strategies	5
Sustainability	5
Definitions	6
References	9

Q1 Board meetings allow adequate participation by all members.

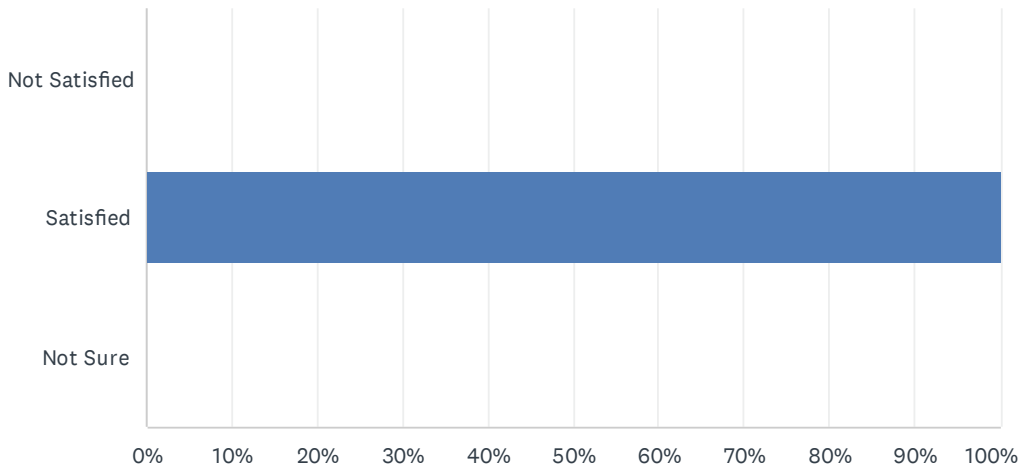
Answered: 7 Skipped: 0



ANSWER CHOICES	RESPONSES
Not Satisfied	0.00% 0
Satisfied	100.00% 7
Not Sure	0.00% 0
TOTAL	7

Q2 Board meetings focus on policies that protect, promote, and improve public health.

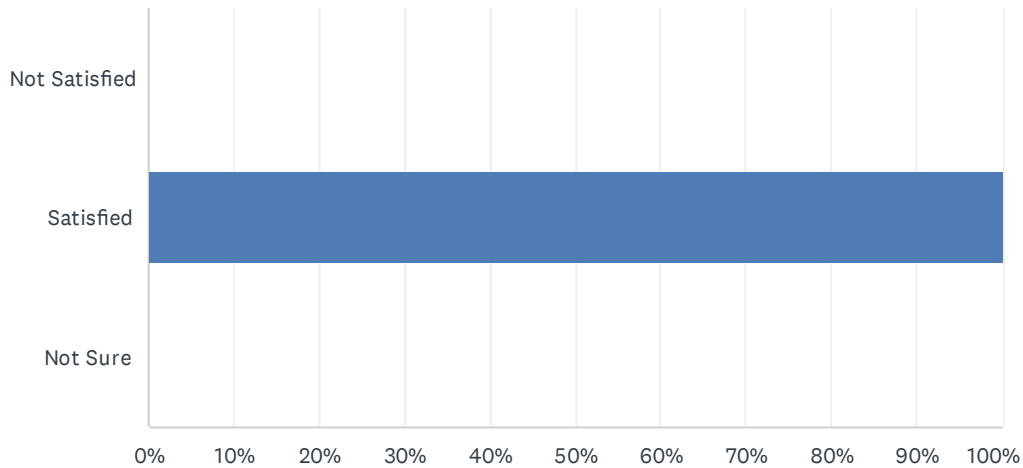
Answered: 7 Skipped: 0



ANSWER CHOICES	RESPONSES
Not Satisfied	0.00% 0
Satisfied	100.00% 7
Not Sure	0.00% 0
TOTAL	7

Q3 Board meetings, in terms of what is accomplished, meet or exceed expectations.

Answered: 7 Skipped: 0

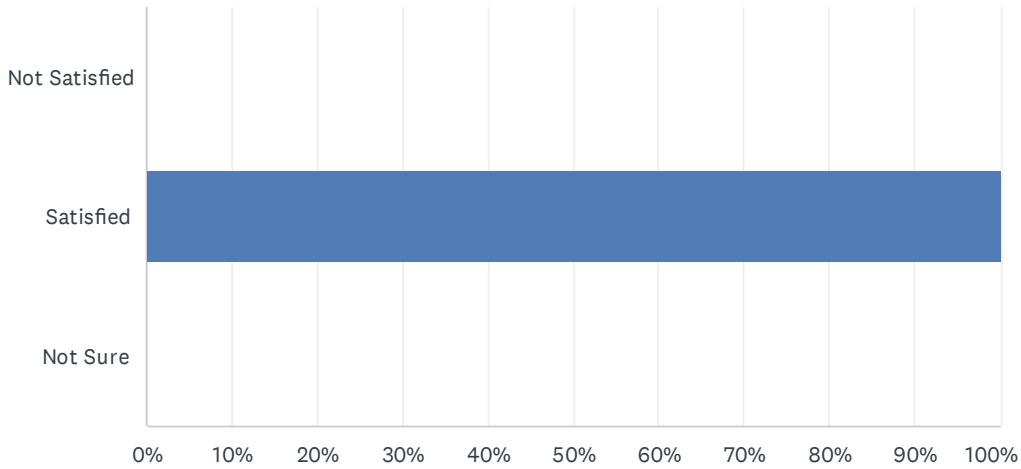


ANSWER CHOICES	RESPONSES
Not Satisfied	0.00% 0
Satisfied	100.00% 7
Not Sure	0.00% 0
TOTAL	7

Q4 Board members understand and support the Health Department Mission.

Answered: 7 Skipped: 0

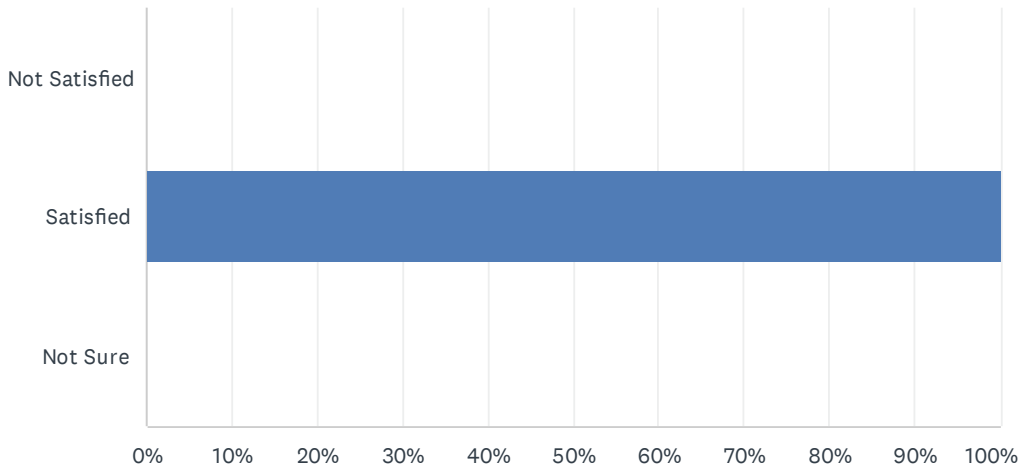
2024 Eau Claire City-County Board of Health Self-Evaluation



ANSWER CHOICES	RESPONSES
Not Satisfied	0.00% 0
Satisfied	100.00% 7
Not Sure	0.00% 0
TOTAL	7

Q5 Board members understand and support Health Department priorities.

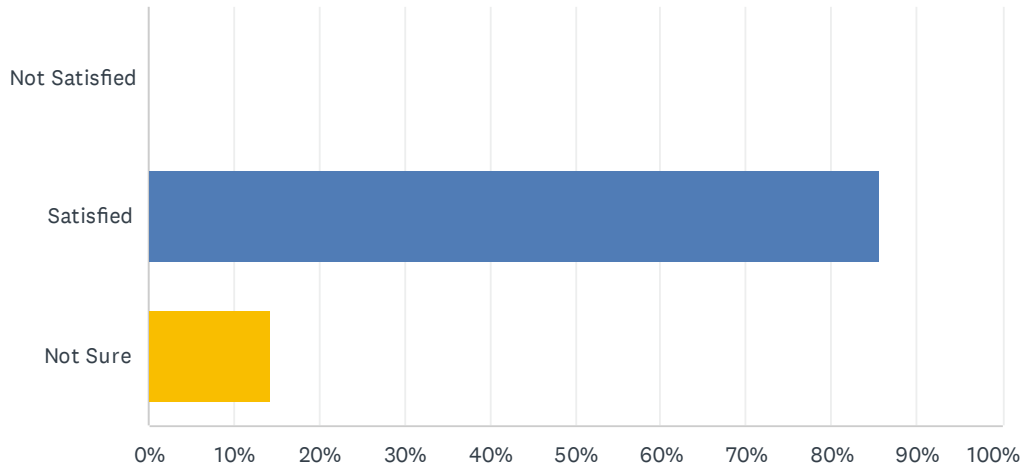
Answered: 7 Skipped: 0



ANSWER CHOICES	RESPONSES
Not Satisfied	0.00% 0
Satisfied	100.00% 7
Not Sure	0.00% 0
TOTAL	7

Q6 Board members understand and support Board of Health priorities.

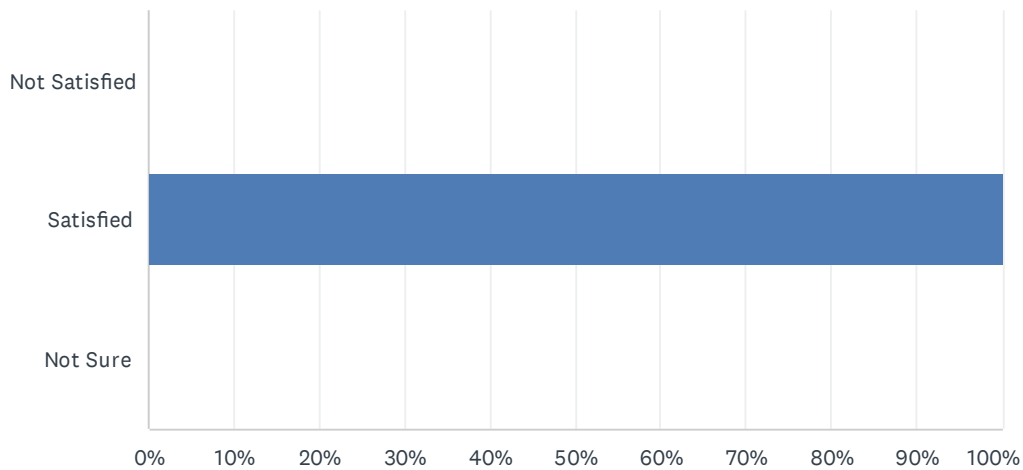
Answered: 7 Skipped: 0



ANSWER CHOICES	RESPONSES
Not Satisfied	0.00% 0
Satisfied	85.71% 6
Not Sure	14.29% 1
TOTAL	7

Q7 The Board reviews important documents, e.g., quarterly financial reports, annual statistical reports, etc.

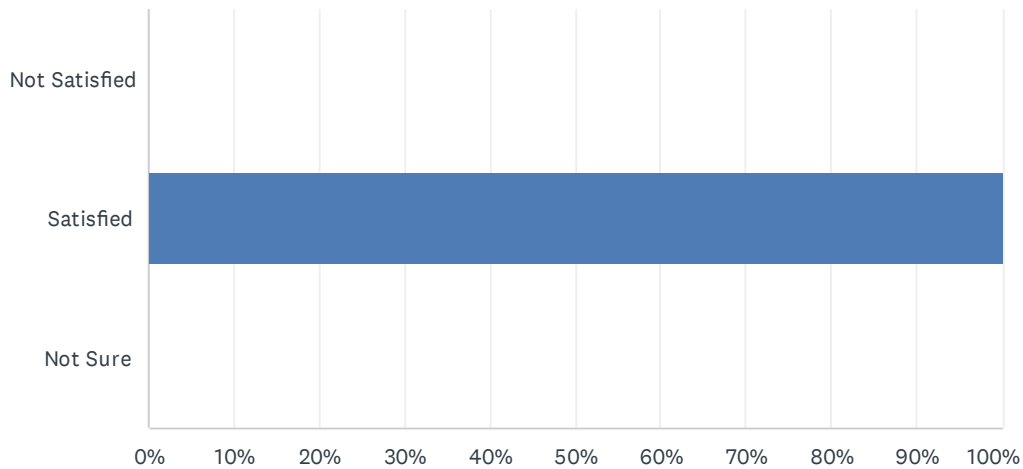
Answered: 7 Skipped: 0



ANSWER CHOICES	RESPONSES
Not Satisfied	0.00% 0
Satisfied	100.00% 7
Not Sure	0.00% 0
TOTAL	7

Q8 The Board deliberates on, approves and supports the annual budget.

Answered: 7 Skipped: 0

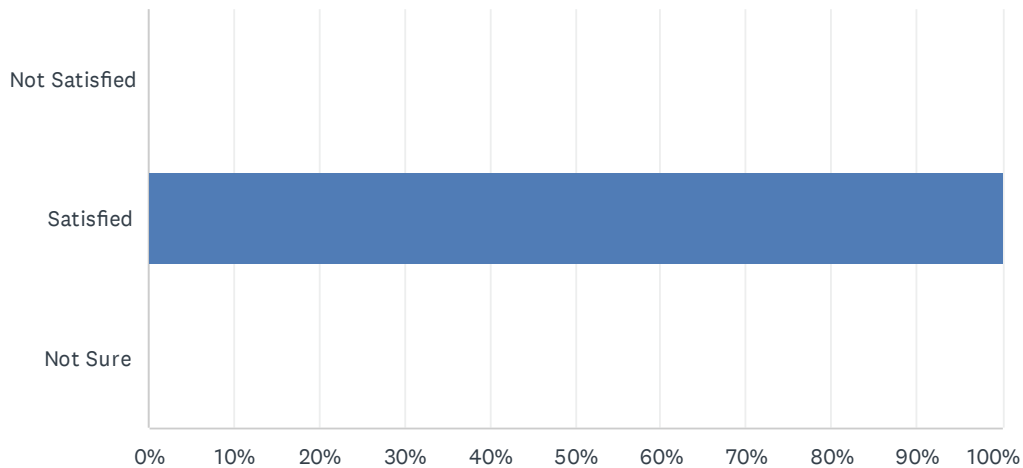


ANSWER CHOICES	RESPONSES
Not Satisfied	0.00% 0
Satisfied	100.00% 7
Not Sure	0.00% 0
TOTAL	7

Q9 The Board is provided adequate information and support to make informed decisions about agenda items and policy decisions.

Answered: 7 Skipped: 0

2024 Eau Claire City-County Board of Health Self-Evaluation



ANSWER CHOICES	RESPONSES
Not Satisfied	0.00% 0
Satisfied	100.00% 7
Not Sure	0.00% 0
TOTAL	7

Q10 Are there Board of Health activities you would like added or things we should stop doing?

Answered: 2 Skipped: 5

#	RESPONSES	DATE
1	none come to mind	4/4/2024 8:11 PM
2	Just putting this out there on how we can advocate or better support. Community Engagement: As Board members, how can we help foster relationships with community stakeholders, including residents, community organizations, and local government officials? Professional Development and Training: We all come with different skillsets and knowledge that can support the staff. As Board members, we can contribute to the professional development of staff and volunteers by sharing our expertise, providing mentorship and guidance, and facilitating training sessions or workshops on relevant topics.	4/4/2024 2:59 PM

Q11 If you rated any of the above not satisfied, please consider describing why or offer suggestions for improvement.

Answered: 1 Skipped: 6

#	RESPONSES	DATE
1	I noted not sure on the Board Priorities because of the discussion at the last meeting. It seems like there is some room for solidifying priority areas and goals for the board going forward. Perhaps putting things into a 2x2 grid with one priority represented in each quadrant	4/4/2024 8:11 PM

and every year we have a 4 goals, one in each priority area. If we set SMART goals, it should be quite clear and simple to track whether or not it is met. (yes or no). Then we can figure out some way to designate whether or not the goal has been achieved for the year. Happy to brainstorm more if people like a concept like this.

Q12 Are there any topics you would recommend for Board of Health training?

Answered: 2 Skipped: 5

#	RESPONSES	DATE
1	The only thing that comes to mind is training around our city/county levy system and process and in what ways the amount of funding to the DOH could be influenced.	4/4/2024 8:11 PM
2	Here's a suggested training list for the Board of Health where staff can come and share some information at the beginning of each board meeting and look at these topics with the lens of how the Board of Health can learn or support these areas: Environmental Health: Explore the relationship between environmental factors and human health, including topics such as air and water quality, food safety, waste management, and occupational health. Health Promotion and Education: Learn strategies for promoting healthy behaviors and lifestyles within communities, including methods for developing and implementing effective health education programs. Community Health Assessment: Gain skills in assessing the health needs and assets of a community, including conducting surveys, analyzing data, and identifying priority health issues. Policy and Advocacy in Public Health: Understand the role of policy in shaping public health outcomes and learn how to advocate for policies that promote health equity and address social determinants of health. Emergency Preparedness and Response: Prepare for public health emergencies by learning about emergency planning, response protocols, communication strategies, and coordination with other agencies and stakeholders. (I know we touched base on this one already for the staff, but how does this also effect the work of the Board of Health.) Health Equity and Social Justice: Explore the impact of social, economic, and environmental factors on health disparities, and learn strategies for promoting health equity and addressing systemic inequalities.	4/4/2024 2:59 PM

Q13 Additional Comments

Answered: 2 Skipped: 5

#	RESPONSES	DATE
1	The board structure helps assure balanced support and broad input from multiple city and county constituencies for the activities of the department. This would be lost if the reporting structure would change and the director would have to report to a single individual.	4/9/2024 5:55 PM
2	I'd have interest in learning more about how the DOH uses the What Works for Health database, whether there is a certain "evidence rating" that is expected for programming and efforts invested in, and/or if the department keeps track of what evidence rating each activity they do has. Related to this and connecting back to the levy system, I'd like to know about our city/county history in terms of considering alcohol taxes. What is our current status and when was the last attempt at modifying the status?	4/4/2024 8:11 PM

Bill	Sponsors	Title	Lists
WI 2023-2024 SB 11	Jacque Spreitzer Cabral- Guevara	Relating to: expanding the treatment alternatives and diversion programs. (FE) Companions: AB 17	WPHA-WALHDAB Clients WPHA-WALHDAB Internal Position Support
WI 2023-2024 SJR 5	Marklein Ballweg Cabral- Guevara	Relating to: the appropriation authority of the legislature and the allocation of moneys Wisconsin receives from the federal government (second consideration). Companions: AJR 6	WPHA-WALHDAB Clients WPHA-WALHDAB Internal Position Oppose
WI 2023-2024 AB 17	Tittl Goyke C. Anderson	Relating to: expanding the treatment alternatives and diversion programs. (FE) Companions: SB 11	WPHA-WALHDAB Clients WPHA-WALHDAB Internal Position Support
WI 2023-2024 SB 58	Cowles Testin Ballweg	Relating to: nitrate contamination and the well compensation grant program. (FE) Companions: AB 64	WPHA-WALHDAB Clients WPHA-WALHDAB Internal Position Support
WI 2023-2024 AB 64	Kitchens Novak Shankland	Relating to: nitrate contamination and the well compensation grant program. (FE) Companions: SB 58	WPHA-WALHDAB Clients WPHA-WALHDAB Internal Position Support

Bill	Sponsors	Title	Lists
WI 2023-2024 SB 110	Ballweg Felzkowski Carpenter	Relating to: extension of eligibility under the Medical Assistance program for postpartum women. (FE) Companions: AB 114	WPHA-WALHDAB Clients WPHA-WALHDAB Internal Position Support
WI 2023-2024 SB 130	Stroebe Roys Ballweg	Relating to: the face-to-face requirement for retail sales of alcohol beverages and remote orders for the sale of alcohol beverages to be delivered or picked up on retail licensed premises. (FE) Companions: AB 127	WPHA-WALHDAB Clients WPHA-WALHDAB Internal Position Oppose
WI 2023-2024 AB 114	Rozar Kurtz Allen	Relating to: extension of eligibility under the Medical Assistance program for postpartum women. (FE) Companions: SB 110	WPHA-WALHDAB Clients WPHA-WALHDAB Internal Position Support
WI 2023-2024 AB 127	Duchow Myers J. Anderson	Relating to: the face-to-face requirement for retail sales of alcohol beverages and remote orders for the sale of alcohol beverages to be delivered or picked up on retail licensed premises. (FE) Companions: SB 130	WPHA-WALHDAB Clients WPHA-WALHDAB Internal Position Oppose
WI 2023-2024 SB 205	James Ballweg Cabral- Guevara	Relating to: grants to prevent suicide by firearm and making an appropriation. (FE) Companions: AB 173	WPHA-WALHDAB Clients WPHA-WALHDAB Internal Position Support

Bill	Sponsors	Title	Lists
WI 2023-2024 SB 211	Felzkowski Cabral Guevara James	Relating to: permitting pharmacists to prescribe certain contraceptives, extending the time limit for emergency rule procedures, providing an exemption from emergency rule procedures, granting rule-making authority, and providing a penalty. (FE) Companions: AB 176	WPHA-WALHDAB Clients WPHA-WALHDAB Internal Position Support
WI 2023-2024 SB 177	Joint Legislative Council	Relating to: fatality review teams and granting rule-making authority. Companions: AB 188	WPHA-WALHDAB Clients WPHA-WALHDAB Internal Position Support
WI 2023-2024 AB 148	Penterman Macco Allen	Relating to: disenrollment of ineligible individuals from and redeterminations of eligibility for the BadgerCare Plus program and database confirmation for public assistance program eligibility. (FE) Companions: SB 245	WPHA-WALHDAB Clients WPHA-WALHDAB Internal Position Oppose
WI 2023-2024 AB 173	Sortwell S. Johnson Doyle	Relating to: grants to prevent suicide by firearm and making an appropriation. (FE) Companions: SB 205	WPHA-WALHDAB Clients WPHA-WALHDAB Internal Position Support
WI 2023-2024 AB 176	Kitchens Magnafici Duchow	Relating to: permitting pharmacists to prescribe certain contraceptives, extending the time limit for emergency rule procedures, providing an exemption from emergency rule procedures, granting rule-making authority, and providing a penalty. (FE) Companions: SB 211	WPHA-WALHDAB Clients WPHA-WALHDAB Internal Position Support

Bill	Sponsors	Title	Lists
WI 2023-2024 SB 245	Stafsholt Cabral-Guevara Felzkowski	Relating to: disenrollment of ineligible individuals from and redeterminations of eligibility for the BadgerCare Plus program and database confirmation for public assistance program eligibility. (FE) Companions: AB 148	WPHA-WALHDAB Clients WPHA-WALHDAB Internal Position Oppose
WI 2023-2024 AB 188	Joint Legislative Council	Relating to: fatality review teams and granting rule-making authority. Companions: SB 177	WPHA-WALHDAB Clients WPHA-WALHDAB Internal Position Support
WI 2023-2024 AB 218	Subeck Emerson C. Anderson	Relating to: eliminating certain abortion prohibitions. Companions: SB 298	WPHA-WALHDAB Clients WPHA-WALHDAB Internal Position Support
WI 2023-2024 SB 262	Jacque Larson Smith	Relating to: open alcohol containers in or on all-terrain or utility terrain vehicles. Companions: AB 260	WPHA-WALHDAB Clients WPHA-WALHDAB Internal Position Support
WI 2023-2024 AB 260	Mursau Andraca Palmeri	Relating to: open alcohol containers in or on all-terrain or utility terrain vehicles. Companions: SB 262	WPHA-WALHDAB Clients WPHA-WALHDAB Internal Position Support

Bill	Sponsors	Title	Lists
WI 2023-2024 AB 247	Behnke Wichgers Bodden	Relating to: prohibitions on the use of public employees and public property for activities relating to abortion. (FE) Companions: SB 300	WPHA-WALHDAB Clients WPHA-WALHDAB Internal Position Oppose
WI 2023-2024 SB 294	Jagler Quinn Feyen	Relating to: a main street housing rehabilitation revolving loan fund and loan program. (FE) Companions: AB 265	WPHA-WALHDAB Clients WPHA-WALHDAB Internal Position Support
WI 2023-2024 SB 293	Quinn Jacque Cabral- Guevara	Relating to: residential housing infrastructure revolving loan fund and revolving loan program. (FE) Companions: AB 264	WPHA-WALHDAB Clients WPHA-WALHDAB Internal Position Support
WI 2023-2024 SB 279	Stafsholt Quinn	Relating to: service of alcohol beverages on retail licensed premises by underage persons. Companions: AB 286	WPHA-WALHDAB Clients WPHA-WALHDAB Internal Position Oppose
WI 2023-2024 SB 297	Stroebe Quinn Jacque	Relating to: housing rehabilitation loans awarded by the Wisconsin Housing and Economic Development Authority. (FE) Companions: AB 267	WPHA-WALHDAB Clients WPHA-WALHDAB Internal Position Support

Bill	Sponsors	Title	Lists
WI 2023-2024 SB 295	Feyen Quinn Jacque	Relating to: commercial-to-housing conversion revolving loan fund and loan program. (FE) Companions: AB 268	WPHA-WALHDAB Clients WPHA-WALHDAB Internal Position Support
WI 2023-2024 AB 273	Spiros Drake C. Anderson	Relating to: Department of Revenue enforcement and providing a penalty. (FE) Companions: SB 268	WPHA-WALHDAB Clients WPHA-WALHDAB Internal Position Monitoring
WI 2023-2024 AB 286	Green Bodden Kitchens	Relating to: service of alcohol beverages on retail licensed premises by underage persons. Companions: SB 279	WPHA-WALHDAB Clients WPHA-WALHDAB Internal Position Oppose
WI 2023-2024 SB 298	Roys Agard Carpenter	Relating to: eliminating certain abortion prohibitions. Companions: AB 218	WPHA-WALHDAB Clients WPHA-WALHDAB Internal Position Support
WI 2023-2024 SB 300	Jacque Quinn Stroebe	Relating to: prohibitions on the use of public employees and public property for activities relating to abortion. (FE) Companions: AB 247	WPHA-WALHDAB Clients WPHA-WALHDAB Internal Position Oppose

Bill	Sponsors	Title	Lists
WI 2023-2024 SB 301	Felzkowski Cabral Guevara James	Relating to: county and municipal aid; imposing a city sales tax and an additional county sales tax to pay the unfunded actuarial accrued liability of city and county retirement systems; requiring newly hired city and county employees of certain city agencies and counties to be enrolled in the Wisconsin Retirement System; fire and police commissions of first class cities; eliminating the personal property tax; reporting certain crimes and other incidents that occur on school property or school transportation; advisory referenda; local health officers; local public protection services; exceptions to local levy limits; local regulation of certain quarry operations; emergency services; local approval of projects and activities under the Warren Knowles-Gaylord Nelson Stewardship 2000 Program; requiring a referendum; and granting rule-making authority. (FE) Companions: AB 245	WPHA-WALHDAB Clients WPHA-WALHDAB Internal Position Monitoring
WI 2023-2024 AB 304	Vos August Swearingen	Relating to: creating the Division of Alcohol Beverages attached to the Department of Revenue; the regulation of alcohol beverages and enforcement of alcohol beverage laws; interest restrictions relating to, and authorized activities of, brewers, brewpubs, wineries, manufacturers, rectifiers, wholesalers, and retailers; shipping alcohol beverages by means of fulfillment houses and common carriers; the consumption of alcohol beverages in a public place; creating a no-sale event venue permit; creating an operator's permit; liquor licenses transferred from one municipality to another; retailers' authorized activities; liquor license quotas; the safe ride program; the presence of underage persons and conduct of other business on licensed premises; the occupational tax on alcohol beverages; repealing a rule promulgated by the Department of Revenue; granting rule-making authority; and providing a penalty. (FE) Companions: SB 332	WPHA-WALHDAB Clients WPHA-WALHDAB Internal Position Monitoring
WI 2023-2024 SB 332	LeMahieu Feyen Testin	Relating to: creating the Division of Alcohol Beverages attached to the Department of Revenue; the regulation of alcohol beverages and enforcement of alcohol beverage laws; interest restrictions relating to, and authorized activities of, brewers, brewpubs, wineries, manufacturers, rectifiers, wholesalers, and retailers; shipping alcohol beverages by means of fulfillment houses and common carriers; the consumption of alcohol beverages in a public place; creating a no-sale event venue permit; creating an operator's permit; liquor licenses transferred from one municipality to another; retailers' authorized activities; liquor license quotas; the safe ride program; the presence of underage persons and conduct of other business on licensed premises; the occupational tax on alcohol beverages; repealing a rule promulgated by the Department of Revenue; granting rule-making authority; and providing a penalty. (FE) Companions: AB 304	WPHA-WALHDAB Clients WPHA-WALHDAB Internal Position Monitoring
WI 2023-2024 SB 345	Quinn Bradley Feyen	Relating to: grants to Choose Life Wisconsin and making an appropriation. (FE) Companions: AB 344	WPHA-WALHDAB Clients WPHA-WALHDAB Internal Position Oppose
WI 2023-2024 SB 343	Quinn Ballweg Hutton	Relating to: the definition of abortion. Companions: AB 357	WPHA-WALHDAB Clients WPHA-WALHDAB Internal Position Oppose

Bill	Sponsors	Title	Lists
WI 2023-2024 SB 341	Roys L. Johnson Agard	Relating to: coverage of maternity and newborn care under health insurance policies and plans and granting rule-making authority. Companions: AB 340	WPHA-WALHDAB Clients WPHA-WALHDAB Internal Position Support
WI 2023-2024 AB 344	Nedweski Rozar Allen	Relating to: grants to Choose Life Wisconsin and making an appropriation. (FE) Companions: SB 345	WPHA-WALHDAB Clients WPHA-WALHDAB Internal Position Oppose
WI 2023-2024 AB 340	Vining Drake Andraca	Relating to: coverage of maternity and newborn care under health insurance policies and plans and granting rule-making authority. Companions: SB 341	WPHA-WALHDAB Clients WPHA-WALHDAB Internal Position Support
WI 2023-2024 SB 356	James	Relating to: grants to prevent suicide by firearm and making an appropriation. (FE) Companions: AB 355	WPHA-WALHDAB Clients WPHA-WALHDAB Internal Position Support
WI 2023-2024 AB 357	Magnafici Rozar Allen	Relating to: the definition of abortion. Companions: SB 343	WPHA-WALHDAB Clients WPHA-WALHDAB Internal Position Oppose

Bill	Sponsors	Title	Lists
WI 2023-2024 SB 377	Knodl Quinn Marklein	Relating to: designating University of Wisconsin and technical college sports and athletic teams based on the sex of the participants. Companions: AB 378	WPHA-WALHDAB Clients WPHA-WALHDAB Internal Position Oppose
WI 2023-2024 SB 378	Knodl Quinn Marklein	Relating to: designating athletic sports and teams operated or sponsored by public schools or private schools participating in a parental choice program based on the sex of the participants. Companions: AB 377	WPHA-WALHDAB Clients WPHA-WALHDAB Internal Position Oppose
WI 2023-2024 AB 378	Dittrich Rettinger Callahan	Relating to: designating University of Wisconsin and technical college sports and athletic teams based on the sex of the participants. Companions: SB 377	WPHA-WALHDAB Clients WPHA-WALHDAB Internal Position Oppose
WI 2023-2024 SB 418	Carpenter Larson Roys	Relating to: purchasing and distributing vaccines, granting rule-making authority, and making an appropriation. (FE) Companions: AB 427	WPHA-WALHDAB Clients WPHA-WALHDAB Internal Position Support
WI 2023-2024 SB 430	Ballweg Agard Cabral- Guevara	Relating to: requiring an employer to provide reasonable break time and accommodations for an employee who is breastfeeding the employee's child to express breast milk for the child. (FE) Companions: AB 436	WPHA-WALHDAB Clients WPHA-WALHDAB Internal Position Support

Bill	Sponsors	Title	Lists
WI 2023-2024 SJR 65	Carpenter Cabral Guevara Larson	Relating to: recognizing August as Immunization Awareness Month in Wisconsin. Companions: AJR 72	WPHA-WALHDAB Clients WPHA-WALHDAB Internal Position Support
WI 2023-2024 AB 436	Subeck C. Anderson Andraca	Relating to: requiring an employer to provide reasonable break time and accommodations for an employee who is breastfeeding the employee's child to express breast milk for the child. (FE) Companions: SB 430	WPHA-WALHDAB Clients WPHA-WALHDAB Internal Position Support
WI 2023-2024 AB 429	Subeck Ratcliff J. Anderson	Relating to: eliminating personal conviction exemption from immunizations. Companions: SB 442	WPHA-WALHDAB Clients WPHA-WALHDAB Internal Position Support
WI 2023-2024 AB 427	Subeck Joers C. Anderson	Relating to: purchasing and distributing vaccines, granting rule-making authority, and making an appropriation. (FE) Companions: SB 418	WPHA-WALHDAB Clients WPHA-WALHDAB Internal Position Support
WI 2023-2024 AJR 72	Subeck Shelton C. Anderson	Relating to: recognizing August as Immunization Awareness Month in Wisconsin. Companions: SJR 65	WPHA-WALHDAB Clients WPHA-WALHDAB Internal Position Support

Bill	Sponsors	Title	Lists
WI 2023-2024 AB 434	Sortwell Gustafson Stubbs	Relating to: indoor air quality inspection and evaluation program for public schools. (FE) Companions: SB 444	WPHA-WALHDAB Clients WPHA-WALHDAB Internal Position Monitoring
WI 2023-2024 SB 444	Cowles Wanggaard	Relating to: indoor air quality inspection and evaluation program for public schools. (FE) Companions: AB 434	WPHA-WALHDAB Clients WPHA-WALHDAB Internal Position Monitoring
WI 2023-2024 SB 442	Spreitzer Roys	Relating to: eliminating personal conviction exemption from immunizations. Companions: AB 429	WPHA-WALHDAB Clients WPHA-WALHDAB Internal Position Support
WI 2023-2024 AB 451	Gustafson C. Anderson Armstrong	Relating to: exempting tobacco bars from the public smoking ban. Companions: SB 471	WPHA-WALHDAB Clients WPHA-WALHDAB Internal Position Oppose
WI 2023-2024 SB 471	Knodl Nass Tomczyk	Relating to: exempting tobacco bars from the public smoking ban. Companions: AB 451	WPHA-WALHDAB Clients WPHA-WALHDAB Internal Position Oppose

Bill	Sponsors	Title	Lists
WI 2023-2024 SB 480	Stroebel Tomczyk Knodl	Relating to: prohibiting gender transition medical intervention for individuals under 18 years of age. Companions: AB 465	WPHA-WALHDAB Clients WPHA-WALHDAB Internal Position Oppose
WI 2023-2024 SB 469	L. Johnson Hesselbein Agard	Relating to: allowing the enactment of family and medical leave ordinances. (FE) Companions: AB 478	WPHA-WALHDAB Clients WPHA-WALHDAB Internal Position Support
WI 2023-2024 SB 474	Spreitzer Carpenter Roys	Relating to: discrimination in employment, housing, public accommodations, education, insurance coverage, national guard, jury duty, and adoption and in the receipt of mental health or vocational rehabilitation services. Companions: AB 501	WPHA-WALHDAB Clients WPHA-WALHDAB Internal Position Support
WI 2023-2024 AB 478	Subeck Bare C. Anderson	Relating to: allowing the enactment of family and medical leave ordinances. (FE) Companions: SB 469	WPHA-WALHDAB Clients WPHA-WALHDAB Internal Position Support
WI 2023-2024 AB 501	Neubauer Snodgrass Cabrera	Relating to: discrimination in employment, housing, public accommodations, education, insurance coverage, national guard, jury duty, and adoption and in the receipt of mental health or vocational rehabilitation services. Companions: SB 474	WPHA-WALHDAB Clients WPHA-WALHDAB Internal Position Support

Bill	Sponsors	Title	Lists
WI 2023-2024 SB 595	James Taylor Ballweg	Relating to: immunity for certain controlled substances offenses for aiders and aided persons. Companions: AB 634	WPHA-WALHDAB Clients WPHA-WALHDAB Internal Position Support
WI 2023-2024 AB 612	Sortwell Goeben Rozar	Relating to: waivers from workplace immunization requirements. Companions: SB 921	WPHA-WALHDAB Clients WPHA-WALHDAB Internal Position Oppose
WI 2023-2024 AB 634	Rozar Ortiz-Velez C. Anderson	Relating to: immunity for certain controlled substances offenses for aiders and aided persons. Companions: SB 595	WPHA-WALHDAB Clients WPHA-WALHDAB Internal Position Support
WI 2023-2024 SB 669	Tomczyk Cabral-Guevara	Relating to: pay for performance grant requirements, use of public lands to provide temporary residence for the homeless, and providing a penalty. (FE) Companions: AB 689	WPHA-WALHDAB Clients WPHA-WALHDAB Internal Position Oppose
WI 2023-2024 SB 732	Roys Taylor Agard	Relating to: public funding for pregnancy counseling organizations. Companions: AB 776	WPHA-WALHDAB Clients WPHA-WALHDAB Internal Position Support

Bill	Sponsors	Title	Lists
WI 2023-2024 SB 734	Roys Agard Carpenter	Relating to: the elimination of certain abortion-related regulations. Companions: AB 777	WPHA-WALHDAB Clients WPHA-WALHDAB Internal Position Support
WI 2023-2024 SB 720	Larson Agard Carpenter	Relating to: providing state aid to reimburse public and private schools that provide free meals to all pupils for the costs of those meals and making an appropriation. (FE) Companions: AB 754	WPHA-WALHDAB Clients WPHA-WALHDAB Internal Position Support
WI 2023-2024 AB 689	Dallman Kurtz Behnke	Relating to: pay for performance grant requirements, use of public lands to provide temporary residence for the homeless, and providing a penalty. (FE) Companions: SB 669	WPHA-WALHDAB Clients WPHA-WALHDAB Internal Position Oppose
WI 2023-2024 AB 754	Shelton Hong C. Anderson	Relating to: providing state aid to reimburse public and private schools that provide free meals to all pupils for the costs of those meals and making an appropriation. (FE) Companions: SB 720	WPHA-WALHDAB Clients WPHA-WALHDAB Internal Position Support
WI 2023-2024 SB 781	Stroebe	Relating to: the sale of unpasteurized dairy products. (FE) Companions: AB 831	WPHA-WALHDAB Clients WPHA-WALHDAB Internal Position Oppose

Bill	Sponsors	Title	Lists
WI 2023-2024 AB 777	Hong C. Anderson J. Anderson	Relating to: the elimination of certain abortion-related regulations. Companions: SB 734	WPHA-WALHDAB Clients WPHA-WALHDAB Internal Position Support
WI 2023-2024 AB 776	Hong C. Anderson J. Anderson	Relating to: public funding for pregnancy counseling organizations. Companions: SB 732	WPHA-WALHDAB Clients WPHA-WALHDAB Internal Position Support
WI 2023-2024 SB 808	Hesselbein Roys Spreitzer	Relating to: local health officer authority to mandate business closure to control communicable disease. Companions: AB 858	WPHA-WALHDAB Clients WPHA-WALHDAB Internal Position Support
WI 2023-2024 AB 831	Behnke Rettinger Bodden	Relating to: the sale of unpasteurized dairy products. (FE) Companions: SB 781	WPHA-WALHDAB Clients WPHA-WALHDAB Internal Position Oppose
WI 2023-2024 AB 858	Bare Joers Vining	Relating to: local health officer authority to mandate business closure to control communicable disease. Companions: SB 808	WPHA-WALHDAB Clients WPHA-WALHDAB Internal Position Support

Bill	Sponsors	Title	Lists
WI 2023-2024 SB 848	Larson Roys	Relating to: the sale of alcohol beverages by a municipality or county in a park. Companions: AB 866	WPHA-WALHDAB Clients WPHA-WALHDAB Internal Position Oppose
WI 2023-2024 AB 866	Clancy J. Anderson Joers	Relating to: the sale of alcohol beverages by a municipality or county in a park. Companions: SB 848	WPHA-WALHDAB Clients WPHA-WALHDAB Internal Position Oppose
WI 2023-2024 SB 920	Nass Cabral- Guevara	Relating to: waivers from immunization requirements at institutions of higher education. Companions: AB 610	WPHA-WALHDAB Clients WPHA-WALHDAB Internal Position Oppose
WI 2023-2024 SB 921	Nass Cabral- Guevara	Relating to: waivers from workplace immunization requirements. Companions: AB 612	WPHA-WALHDAB Clients WPHA-WALHDAB Internal Position Oppose
WI 2023-2024 AB 1014	Hurd Vining Behnke	Relating to: childhood obesity prevention and management grants. (FE) Companions: SB 953	WPHA-WALHDAB Clients WPHA-WALHDAB Internal Position Support

Bill	Sponsors	Title	Lists
WI 2023-2024 SB 952	Tomczyk Spreitzer	Relating to: childhood obesity prevention and management grants and making an appropriation. (FE) Companions: AB 1015	WPHA-WALHDAB Clients WPHA-WALHDAB Internal Position Support
WI 2023-2024 SB 953	Tomczyk Spreitzer	Relating to: childhood obesity prevention and management grants. (FE) Companions: AB 1014	WPHA-WALHDAB Clients WPHA-WALHDAB Internal Position Support
WI 2023-2024 SB 948	Ballweg Carpenter Pfaff	Relating to: healthy food incentive program. (FE) Companions: AB 1013	WPHA-WALHDAB Clients WPHA-WALHDAB Internal Position Support
WI 2023-2024 SB 962	Jagler Testin	Relating to: the procedure for adding federal newborn screening recommendations to the state-required newborn screenings, granting rule-making authority, and providing an exemption from emergency rule procedures. (FE) Companions: AB 1057	WPHA-WALHDAB Clients WPHA-WALHDAB Internal Position Support
WI 2023-2024 AB 1063	Billings Vining Baldeh	Relating to: prohibiting vaping on public and private school property.	WPHA-WALHDAB Clients WPHA-WALHDAB Internal Position Support

Bill	Sponsors	Title	Lists
WI 2023-2024 AB 1061	Billings Vining Baldeh	Relating to: public health campaign for prevention of tobacco and electronic cigarette use, grants to organizations working on youth vaping and cessation services, and making an appropriation. (FE)	WPHA-WALHDAB Clients WPHA-WALHDAB Internal Position Support
WI 2023-2024 AB 1057	Dittrich Duchow Andraca	Relating to: the procedure for adding federal newborn screening recommendations to the state-required newborn screenings, granting rule-making authority, and providing an exemption from emergency rule procedures. (FE) Companions: SB 962	WPHA-WALHDAB Clients WPHA-WALHDAB Internal Position Support
WI 2023-2024 AB 1062	Billings Vining Baldeh	Relating to: applying the indoor smoking ban to electronic smoking devices and marijuana.	WPHA-WALHDAB Clients WPHA-WALHDAB Internal Position Support
WI 2023-2024 SB 1053	Law Revision Committee	Relating to: degree requirements for certain local health officers; admissions authorized by counties to mental health institutes; and eliminating references to defunct regional long-term care advisory committees (suggested as remedial legislation by the Department of Health Services). Companions: AB 1100	WPHA-WALHDAB Clients WPHA-WALHDAB Internal Position Support
WI 2023-2024 SB 312	Wimberger Cowles Ballweg	Relating to: programs and requirements to address perfluoroalkyl and polyfluoroalkyl substances. Companions: AB 312	WPHA-WALHDAB Clients WPHA-WALHDAB Internal Position Monitoring

Bill	Sponsors	Title	Lists
WI 2023-2024 SB 145	Testin Cabral Guevara Roys	Relating to: advanced practice registered nurses, extending the time limit for emergency rule procedures, providing an exemption from emergency rule procedures, and granting rule-making authority. (FE) Companions: AB 154	WPHA-WALHDAB Clients WPHA-WALHDAB Internal Position Support
WI 2023-2024 AB 377	Dittrich Rettinger Callahan	Relating to: designating athletic sports and teams operated or sponsored by public schools or private schools participating in a parental choice program based on the sex of the participants. Companions: SB 378	WPHA-WALHDAB Clients WPHA-WALHDAB Internal Position Oppose
WI 2023-2024 AB 610	Sortwell Goeben Rozar	Relating to: waivers from immunization requirements at institutions of higher education. Companions: SB 920	WPHA-WALHDAB Clients WPHA-WALHDAB Internal Position Support
WI 2023-2024 SB 916	Tomczyk James Ballweg	Relating to: requiring local governments to designate an individual for consultation required under a federal program regarding refugee resettlement and assistance. (FE) Companions: AB 1004	WPHA-WALHDAB Clients WPHA-WALHDAB Internal Position Oppose
WI 2023-2024 AB 1100	Law Revision Committee	Relating to: degree requirements for certain local health officers; admissions authorized by counties to mental health institutes; and eliminating references to defunct regional long-term care advisory committees (suggested as remedial legislation by the Department of Health Services). Companions: SB 1053	WPHA-WALHDAB Clients WPHA-WALHDAB Internal Position Support

Bill	Sponsors	Title	Lists
WI 2023-2024 AB 1013	Joers Hurd Vining	Relating to: healthy food incentive program. (FE) Companions: SB 948	WPHA-WALHDAB Clients WPHA-WALHDAB Internal Position Support
WI 2023-2024 AJR 6	Wittke Sortwell Armstrong	Relating to: the appropriation authority of the legislature and the allocation of moneys Wisconsin receives from the federal government (second consideration). Companions: SJR 5	WPHA-WALHDAB Clients WPHA-WALHDAB Internal Position Oppose
WI 2023-2024 AB 312	Mursau Swearingen Behnke	Relating to: programs and requirements to address perfluoroalkyl and polyfluoroalkyl substances. Companions: SB 312	WPHA-WALHDAB Clients WPHA-WALHDAB Internal Position Monitoring
WI 2023-2024 AB 1004	Hurd Summerfield Pronschinske	Relating to: requiring local governments to designate an individual for consultation required under a federal program regarding refugee resettlement and assistance. (FE) Companions: SB 916	WPHA-WALHDAB Clients WPHA-WALHDAB Internal Position Oppose
WI 2023-2024 SB 689	Felzkowski Hutton James	Relating to: licensure of dental therapists; extending the time limit for emergency rule procedures; providing an exemption from emergency rule procedures; providing an exemption from rule-making procedures; and granting rule-making authority. (FE) Companions: AB 668	WPHA-WALHDAB Clients WPHA-WALHDAB Internal Position Support

Bill	Sponsors	Title	Lists
WI 2023-2024 AB 154	Magnafici Armstrong Behnke	Relating to: advanced practice registered nurses, extending the time limit for emergency rule procedures, providing an exemption from emergency rule procedures, and granting rule-making authority. (FE) Companions: SB 145	WPHA-WALHDAB Clients WPHA-WALHDAB Internal Position Support
WI 2023-2024 AB 241	Rozar Baldeh Binsfeld	Relating to: regulation of tanning facilities. (FE) Companions: SB 261	WPHA-WALHDAB Clients WPHA-WALHDAB Internal Position Support
WI 2023-2024 AB 465	Allen Vos Armstrong	Relating to: prohibiting gender transition medical intervention for individuals under 18 years of age. Companions: SB 480	WPHA-WALHDAB Clients WPHA-WALHDAB Internal Position Oppose
WI 2023-2024 AB 668	Plumer Rozar Callahan	Relating to: licensure of dental therapists; extending the time limit for emergency rule procedures; providing an exemption from emergency rule procedures; providing an exemption from rule-making procedures; and granting rule-making authority. (FE) Companions: SB 689	WPHA-WALHDAB Clients WPHA-WALHDAB Internal Position Support
WI 2023-2024 SB 268	Wanggaard Taylor Cowles	Relating to: Department of Revenue enforcement and providing a penalty. (FE) Companions: AB 273	WPHA-WALHDAB Clients WPHA-WALHDAB Internal Position Monitoring

Bill	Sponsors	Title	Lists
WI 2023-2024 SB 263	Quinn Cabral-Guevara Cowles	Relating to: 100-day prescription drug supplies under SeniorCare and amending an administrative rule related to 100-day prescription drug supplies permitted under SeniorCare. (FE) Companions: AB 259	WPHA-WALHDAB Clients WPHA-WALHDAB Internal Position Support
WI 2023-2024 AB 259	Hurd Edming Schraa	Relating to: 100-day prescription drug supplies under SeniorCare and amending an administrative rule related to 100-day prescription drug supplies permitted under SeniorCare. (FE) Companions: SB 263	WPHA-WALHDAB Clients WPHA-WALHDAB Internal Position Support
WI 2023-2024 AB 245	Kurtz Rodriguez Vos	Relating to: county and municipal aid; imposing a city sales tax and an additional county sales tax to pay the unfunded actuarial accrued liability of city and county retirement systems; requiring newly hired city and county employees of certain city agencies and counties to be enrolled in the Wisconsin Retirement System; fire and police commissions of first class cities; eliminating the personal property tax; reporting certain crimes and other incidents that occur on school property or school transportation; advisory referenda; local health officers; local public protection services; exceptions to local levy limits; local regulation of certain quarry operations; emergency services; local approval of projects and activities under the Warren Knowles-Gaylord Nelson Stewardship 2000 Program; requiring a referendum; and granting rule-making authority. (FE) Companions: SB 301	WPHA-WALHDAB Clients WPHA-WALHDAB Internal Position Monitoring
WI 2023-2024 SB 7	Jacque Ballweg Cowles	Relating to: use of epinephrine delivery systems and standing orders for epinephrine. (FE) Companions: AB 9	WPHA-WALHDAB Clients WPHA-WALHDAB Internal Position Support
WI 2023-2024 AB 267	Penterman Brooks Emerson	Relating to: housing rehabilitation loans awarded by the Wisconsin Housing and Economic Development Authority. (FE) Companions: SB 297	WPHA-WALHDAB Clients WPHA-WALHDAB Internal Position Support

Bill	Sponsors	Title	Lists
WI 2023-2024 AB 268	Summerfield Brooks Emerson	Relating to: commercial-to-housing conversion revolving loan fund and loan program. (FE) Companions: SB 295	WPHA-WALHDAB Clients WPHA-WALHDAB Internal Position Support
WI 2023-2024 AB 264	Armstrong O'Connor Brooks	Relating to: residential housing infrastructure revolving loan fund and revolving loan program. (FE) Companions: SB 293	WPHA-WALHDAB Clients WPHA-WALHDAB Internal Position Support
WI 2023-2024 AB 265	Hurd Brooks Emerson	Relating to: a main street housing rehabilitation revolving loan fund and loan program. (FE) Companions: SB 294	WPHA-WALHDAB Clients WPHA-WALHDAB Internal Position Support
WI 2023-2024 AB 9	Sortwell Goeben Shankland	Relating to: use of epinephrine delivery systems and standing orders for epinephrine. (FE) Companions: SB 7	WPHA-WALHDAB Clients WPHA-WALHDAB Internal Position Support

1-114 of 114