



Eau Claire City-County
Health Department

Annual Report

————— **2021** —————

TABLE OF CONTENTS

HEALTH DEPARTMENT DIRECTOR’S REPORT	6
2017 – 2021 STRATEGIC PLAN	7
BOARD OF HEALTH	8
PERSONNEL	8
ORGANIZATIONAL CHART	10
COMMUNICABLE DISEASE DIVISION	11
CHIPPEWA VALLEY FREE CLINIC SATELLITE ADULT IMMUNIZATION CLINIC	11
COMMUNICABLE DISEASE	11
COMMUNITY SURVEILLANCE	13
EMERGENCY PREPAREDNESS PROGRAM	14
INFLUENZA IMMUNIZATIONS	14
SCHOOL IMMUNIZATION STATUS	15
WISCONSIN WELL WOMAN PROGRAM	19
COMMUNITY HEALTH PROMOTION DIVISION	19
ADOLESCENT HEALTH	19
ALCOHOL AND TOBACCO COMPLIANCE CHECK PROGRAMS	20
Alcohol Compliance Checks	20
Community Festivals Program	20
Tobacco Compliance Checks	20
ALCOHOL, TOBACCO, AND OTHER DRUG USE PREVENTION	20
Alliance for Substance Abuse and Prevention in Eau Claire County	20
ATOD Prevention in Schools	21
CHILD DEATH REVIEW TEAM	21
CHRONIC DISEASE PREVENTION	22
MENTAL HEALTH	23
Mental Health Matters	23
Suicide Prevention	23
OPIOID MISUSE AND OVERDOSE PREVENTION	24
ENVIRONMENTAL SCIENCES DIVISION	25
AIR QUALITY PROTECTION	25
Incinerator Licensing	25
Indoor Air Pollution	25
Regulations	26
CERTIFIED PUBLIC HEALTH LABORATORY	26
Chemistry Division	26
Colilert/Colisure	26
Food Testing	26
Heavy Metal Analysis	26
Nitrate Samples	26
Organic Chemical Testing	26
Pseudalert	26
DRINKING WATER PROTECTION	27
Municipal Drinking Water Supplies	27
Newborn Infants Program	27

Private Drinking Water Supplies	28
Wisconsin Well Code	28
MAINTENANCE REPORTS AND COMPLIANCE	31
Groundwater Surveillance and Testing	31
Holding Tank Maintenance	31
Pretreatment Unit Maintenance	31
Septic Tank Maintenance	32
PRIVATE ONSITE WASTEWATER DISPOSAL	32
Audits/Evaluation	32
Construction of New/Replacement Systems	33
POWTS Maintenance Program	33
RADIATION PROTECTION AND EMERGENCY PREPAREDNESS	34
Radiation Protection	34
RECREATIONAL WATERS	35
Beaches – Water Quality	35
Swimming Pools	35
Swimming Pools and Beach Laboratory Sampling	35
RODENT, INSECT RABIES, AND VECTOR CONTROL	36
Animal Bites and Rabies Control	36
Bites/Exposures	36
Immunization Information	37
Lyme Disease and other Tick-Borne Disease Prevention	37
Post-Exposure Prophylaxis	37
Quarantine Information	37
Rabies Testing Information	37
West Nile Virus	38
FAMILY PLANNING CLINIC	38
CLINIC VISITS	38
COLPOSCOPY PROGRAM	38
ELECTRONIC MEDICAL RECORDS SYSTEM	38
GET YOURSELF TESTED	39
HIV-PARTNER SERVICES	40
REGIONAL SHARED SERVICES MODEL	40
TELEHEALTH	40
TITLE X RECIPIENT	40
WISCONSIN FAMILY PLANNING REPRODUCTIVE HEALTH ASSOCIATION	40
HEALTHY BEGINNINGS DIVISION	41
FARMERS' MARKET NUTRITION PROGRAM	41
FIRST BREATH PROGRAM	41
FIT FAMILIES	41
KIDS RIDE SAFE PROJECT	42
MY BABY & ME PROGRAM	42
NEWBORN HEART, HEARING, AND BLOOD SCREENING	42
NURSE-FAMILY PARTNERSHIP®	42
NUTRITION EDUCATION	44

PRENATAL CARE COORDINATION AND BENEFIT SERVICES	44
WIC GROCERY STORES AND PHARMACIES	45
WIC OUTREACH	46
WIC PROGRAM PARTICIPATION	46
WIC PROJECTS	49
Breastfeeding Education and Support	49
Coeffective	50
“Feeding Your New Baby: A Very Personal Choice” Class	50
Lead Screenings	50
Oral Health Screenings	50
Western Wisconsin WIC Breastfeeding Support Group on Facebook	51
WIC Breastfeeding Buddy Program	51
POLICY AND SYSTEMS DIVISION	51
COMMUNICATIONS	51
National Public Health Week	51
Other Communication Accomplishments	52
COMMUNITY HEALTH ASSESSMENT/COMMUNITY HEALTH IMPROVEMENT PLAN	52
EAU CLAIRE HEALTHY COMMUNITIES	53
HEALTHY COMMUNITIES ACTION TEAMS 2019	53
Chronic Disease Prevention Action Team	53
Healthy Communities	53
Healthy Relationships Action Team	54
High-Risk Drinking Prevention Action Team	54
Mental Health Action Team	54
Oral Health Action Team	54
HEALTHY COMMUNITIES ACTION TEAMS 2020	55
Chronic Disease Prevention Action Team	55
Healthy Relationships Action Team	55
High-Risk Drinking Prevention Action Team	55
Mental Health Action Team	55
Oral Health Action Team	56
HEALTHY COMMUNITIES ACTION TEAMS 2021	56
Chronic Disease Prevention Action Team	56
Healthy Relationships Action Team	56
High-Risk Drinking Prevention Action Team	56
Mental Health Action Team	56
Oral Health Action Team	56
QUALITY IMPROVEMENT	57
REGULATION AND LICENSING DIVISION	57
BED BUGS	57
CHILDHOOD LEAD POISONING PREVENTION	58
Elevated Blood-Lead Investigations	58
General Lead Investigations	58
ENVIRONMENTAL AND RECREATIONAL SANITATION	58
Body Art Facilities	59

Lodging	59
Parks and Campgrounds	60
Public Facility Regulation	60
FOOD PROTECTION	60
Foodborne Illness Risk Factors and Good Retail Practices Violations Summary	60
Food Inspection Program	62
Laboratory Food and Beverage Sampling Program	62
Retail Food-Not Serving Meals (Previously Known as Retail)	64
Retail Food-Serving Meals (Previously Known as Restaurants)	65
School Food Program	65
HOUSING AND PROPERTY MAINTENANCE AND HYGIENE	66
Eau Claire City Housing Inspection Program	66
Housing Code Enforcement	68
Human Services Investigations	68
Interagency Agreement for the Investigation of Dangerous Living Conditions	68
Manufactured Home Communities	69
Radon	69
HUMAN HEALTH HAZARDS AND SOLID WASTE	70
Garbage Truck Licensing and Inspection	70
Human Health Hazard/Public Health Nuisance Complaints	70
Seven-Mile Creek Landfill	70
Solid Waste	71
University Move-Out Events	71
FINANCIAL SUMMARY REPORT	71
PERFORMANCE MEASURES	73

HEALTH DEPARTMENT DIRECTOR'S REPORT

I am proud to share with you the work of the Eau Claire City-County Health Department team in this 2021 Annual Report. 2021 was a busy and challenging year for the health department as we focused on a broad range of emerging and ongoing public health issues, including:

- COVID-19 partnerships, including community vaccination efforts
- Health equity
- Safe, healthy, and affordable housing for all community members
- Safe water
- Reproductive health services
- Healthy early childhood
- Drug misuse prevention, including opioids

As I reflect on 2021, I am grateful for our dedicated health department team and all our community partners, whose hard work and commitment were critical to our successes this last year. Thank you for your continued support of the work we do to promote health and safety for all communities in Eau Claire County.

We look forward to working with all of you in the next year as we continue to work on these and other important public health topics. We will continue to strive to meet the prevention-focused needs of all that live, work, learn, vacation, play, and spend time here. The health department recognizes that there are challenges and opportunities in the year ahead and is positioned well to be strategic in addressing these. In 2022, the health department will work on health equity and incorporating health in all policies, as well as continuing to address the challenges of drug and alcohol misuse, chronic disease, healthy babies, mental health, homelessness, affordable housing, and public health emergency preparedness. Let me know how we can continue to improve the work we do here at the Health Department.

Respectfully,



Lieske (Elizabeth) Giese
Health Officer-Director
Eau Claire City-County Health Department



2017 – 2021 STRATEGIC PLAN

Mission

Promoting health and safety for all Eau Claire communities

Vision

Eau Claire City-County Health Department will be a leader in assuring health people in healthy communities

Guiding Principles

Prevention:

Promotion of health and prevention of disease, injury and disability is critical in saving lives and money

Health Equity:

Everyone should have equal opportunity to be healthy

Collaboration:

People working together provide the best solutions

Quality:

Efficiency and effectiveness is critical in programs and services

Data Informed:

Collection and analysis of data guides decisions

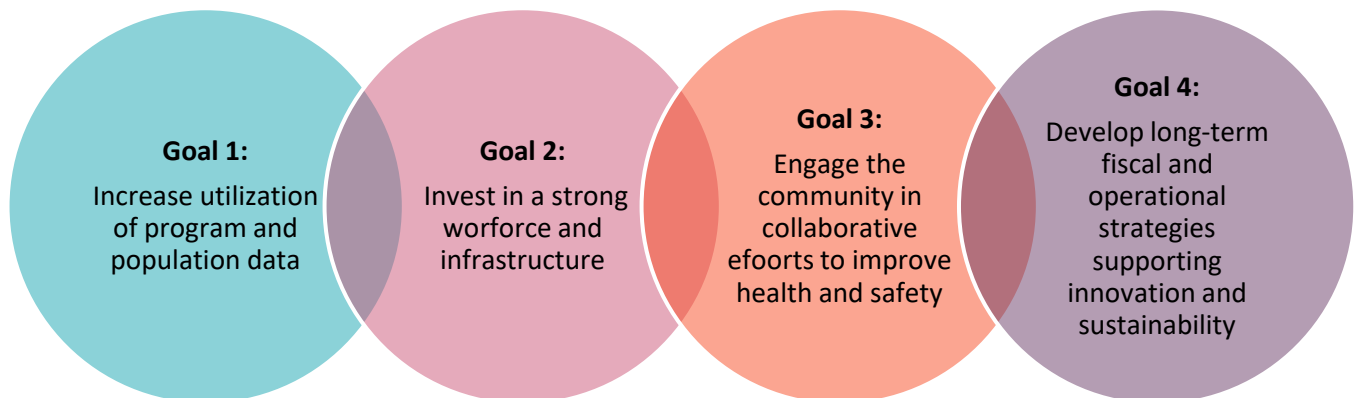
Evidence Based:

Building and utilizing evidence and promising practices in programs and services

Ethical Practice:

Acting with the highest standards of professional practice

Goals



BOARD OF HEALTH

As of December 31, 2021

Merey Price, RN, President – Joint City County Appointment
Terry Miskulin, DDS, Vice President – County Appointment

Donald Bodeau, MD – County Appointment

Martha Nieman, CNM – County Board Member

Jennifer Eddy, MD – City Appointment

Mark Kaeding – County Appointment, Community Representative

Emily Berge, MS, LPC – City Council Member

True Vue – City Appointment, Community Representative

PERSONNEL

Elizabeth Giese, Director/Health Officer RN, MSP
+ (Part-Time) | Fmr (Former) | Ret (Retired)

Operations

Marisa Stanley, MPH, Assistant Director
Tegan Ruland, Operations Division Manager
Janice Vinopal, MBA, CMA, Budget Specialist (ret.)
Hannah Artz, BA, Finance Manager
Brittany Fry, MPH, WWPHERC Director
Ashley Hahn, Community Health Educator
Emily Dejka, MPH, Population Health Fellow
Alicia Carlson, Office Associate
Jill Coss, Office Associate
Amanda Porter, Office Associate
Lori Reynolds, Office Associate

Policy & Systems

Cortney Sperber, BS, CHES, Division Manager
+Melissa Ives, Project Manager (temp.)
Holly Knutson, MPH, MLS(ASCP), Community Health Ed.
Cortney Nicholson, MS, CHES, Community Health Ed.
Gina Schemenauer, BS, CHES, Public Health Specialist

Clinical Services

+Kay Bogumill, BSN, RNC, Public Health Nurse
Janel Hebert, BSN, RN, Public Health Nurse
Abby Hinz, BSN, RN, Public Health Nurse
Gina Holt, CPPM, Program Specialist
Sheila Pelzel, APRN, CNP, FP Nurse Practitioner

Healthy Beginnings

Elizabeth Draeger, RDN, CD, CBE, Division Manager
+Jill Bauer, BSN, RN, Public Health Nurse
+Kate Carothers, BSN, RN, IBCLC, Public Health Nurse
+Gail Feltz, WIC Aide
+Hannah Harter, BSN, RN, Public Health Nurse
+Alice Hampton, Bilingual Interpreter
Jeanne Jinkins, WIC Aide
+Heidi Jusula, BA, WIC Breastfeeding Peer Counselor

Healthy Beginnings (cont.)

Ruth Kilness, RD, CD, CLC, Public Health Dietitian
+Joan Klimek, Program Specialist
+Rebecca Knutson, BSN, RN, Public Health Nurse
+Edna Moua, Bilingual Interpreter
+Sarah Nix, MS, RD, CD, CLS, Public Health Dietitian
Jennifer Price, BSN, RN, Public Health Nurse
Tammy Raeder, BSN, RN, Public Health Nurse
+Alexis Tuma, MS, RD, CD, CLE, Public Health Dietitian
+Bo Vue, Public Health Nurse

Community Health Promotion

Peggy O'Halloran, MPH, Division Manager
Denise Wirth, BSN, RN, Division Manager (ret.)
Emily Carlson, Community Health Educator
+Trish Chmelik, Program Assistant
Margaret Davies, MPH, Public Health Specialist
Sarah Dillivan-Pospisil, MPH, Public Health Specialist
Elizabeth Hagen, BS, PS, Public Health Specialist
+Alison Harder, Public Health Specialist
+Ellen Jacobs, MSN, RN, Public Health Nurse
Kate Kensmoe, Community Health Educator
Brenda Scheurer, MS, Public Health Specialist
Chelsalyn Smith, BSN, RN, Public Health Nurse
Janessa VandenBerge, MPH, CHES, Community Health Ed.

Communicable Disease

Jacqueline Krumenauer, BSN, RN, Division Manager
Paulette Magur, BSN, RN, Division Manager (ret.)
Ashley Bowe, LPN, BSENPH, Program Specialist
Leeshia Crayton, MPH, CPH, Public Health Specialist (fmr)
Allison Gosbin, BSN, RN, Public Health Nurse
Joe Kalscheur, MPH, Public Health Specialist
Rachel Mukai, MPH, CHES, Public Health Specialist
+Anni Vitriago, Communicable Disease Intern
Christina Writz, RN, BSN, Public Health Nurse

Regulation & Licensing

Jeffrey Robb, REHS, Division Manager (fmr)
+Katrina Berg, Environmental Health Aide
Iris Casey, REHS, Environmental Health Specialist
+Reggie Eggen, Environmental Health Aide
+Jennifer Hanson, REHS, Environmental Health Specialist
+Arianna Marshman, Environmental Health Aide
Daniel Peterson, RS, Environmental Health Specialist (ret.)
Valerie Reiter, RS, Environmental Health Specialist
Peter Speckman, Environmental Health Specialist (fmr)
Alyssa Streveler, REHS, Environmental Health Specialist
Tate Zurbuchen, RS, Environmental Health Specialist

Environmental Sciences

Matt Steinbach, Division Manager
Savannah Bergman, BS, Chemist/Microbiologist
Audrey Boerner, MS, Public Health Specialist
Tristin Faust, REHS, Chemist/Microbiologist
Anna Hilger, Chemist/Microbiologist
+Lauren Hodge, Environmental Health Aide
Ted Johnson, BS, Chemist/Microbiologist (ret.)
+Ryan Mohr, Environmental Health Aide
Elizabeth Paulson, REHS, Environmental Health Specialist
+Elise Peterman, Environmental Health Aide
Phil Schumacher, REHS, Environmental Health Specialist

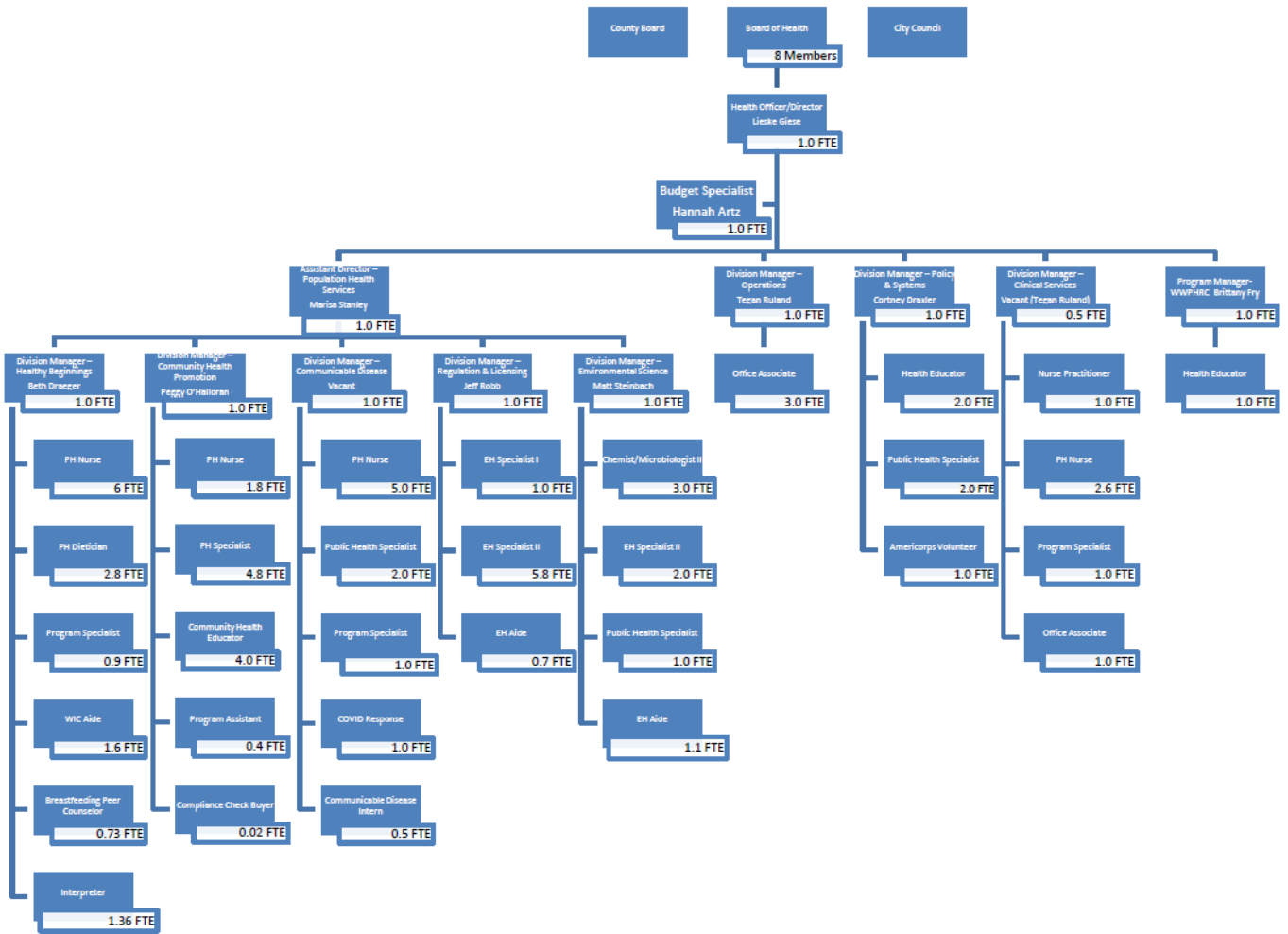
Temporary COVID-19 Support (throughout year)

+Sonja Afrose
+Natalie Bachmeier
+Catherine Barkovich
+Maryanne Cowart
+Dawn Donahue Benning
+Shelby Erickson
+Sarah Fitzgerald
+Aleshia Furlano
+Aleah Gmeiner Anderson
+Rebecca Gorski
+Russell Gorski
+Rebecca Grant
+Melissa Grimmer
+Melissa Heard
+Tiffany Heinzen
+Shawn Hendricks
+Alli Hinz
+Stephanie Hoyle
+Michael Jaeb
+Kayla Johnson
+Payton Kaldenberg
+Aria Kampfer
+Kathleen Keute
+Mikaela Koller
+Mark LeClair

Temporary COVID-19 Support (cont.)

+Anastasia Lisiecki
+Carol Meagher
+Alexei Mota
+Kristine Polden
+Collin Prill
+Pamela Riddle
+Matthew Riedel
+Jessica Rusciano
+Gretchen Sampson
+Laura Sommer
+Alysha Statz
+Catilin Suginaka
+Lindsay Tealey
+Eric Thompson
+Hannah VonRuden
+Beverly Walden
+Shelley Wells
+Rachel Woodward
+Pang Houa Xiong-Yang
+Makenna Zurbuchen

ORGANIZATIONAL CHART



COMMUNICABLE DISEASE DIVISION

CHIPPEWA VALLEY FREE CLINIC SATELLITE ADULT IMMUNIZATION CLINIC:

To increase adult immunization rates, the nursing staff has supervised operation of a satellite adult immunization program at the Chippewa Valley Free Clinic (CVFC) since 2010. As of January 2022, The CVFC became a VFC provider in charge of their own program as required by the state. ECCCHD will continue to provide training support and consultation as well as providing financial support for their vaccine program to ensure they have up-to date-storage and handling equipment.

	2019	2020	2021*
Influenza Immunization	12	15	88
Number Clients	55	28	319
All Immunizations	71	32	354

*The significant increase in total immunizations at CVFC is in part due to the 261 COVID-19 vaccinations given during 2021.

COMMUNICABLE DISEASE:

The Health Department follows-up on reportable diseases to help decrease the spread of illness and keep our community healthy (see table on next page). The Health Department also facilitates community collaborations to local partners about prevention and mitigation of communicable diseases. This includes an Infectious Disease Committee which promotes communication and consistency among local medical partners and the health department related to communicable diseases. This committee has been essential in communication as new or emerging disease information becomes available. Additionally, the Health Department facilitates an HAI Coalition to specifically work on healthcare-associated infection (HAI) prevention and education. The group concentrates efforts on Antimicrobial Stewardship and preventing C. difficile infections.

Communicable Disease Case Reports

Communicable Disease	2018	2019	2020	2021
Acute Flaccid Myelitis	0	1	0	0
Arboviral Disease	2	6	2	1
Babesiosis	3	5	4	6
Blastomycosis	0	1	2	0
Borrelia Miyamotoi	0	3	0	2
Campylobacter	48	50	29	22
Chlamydia	513	464	371	403
Coccidioidomycosis	0	1	0	0
COVID-19	0	0	9,565	11,857
Carbapenem-Resistant Enterobacteriaceae	3	0	0	2
Cryptosporidium	30	12	17	24
Cyclosporiasis	18	0	1	8
E. Coli pathogenic Shiga Toxin-Producing/Enteropathogenic/Enterotoxigenic/Enteroinvasive	22/94/13/2	20/83/20/0	14/72/7/2	11/83/10/0
Ehrlichiosis- Anaplasmosis Phagocytophilum/Chaffeensis/Muris/Undetermined	14/5/1/5	4/5/0/4	11/2/2/3	38/0/1/0
Giardia	15	8	13	9
Gonorrhea	169	131	92	123
Haemophilus Influenzae	3	1	1	3
Hemolytic Uremic Syndrome	0	1	0	0
Hepatitis A – acute	0	0	0	0
Hepatitis B – acute/chronic/unknown*	0/6/2	0/8/1	0/9/0	0/4/0
Hepatitis C – acute/chronic	1/65	3/30	4/25	1/21
Histoplasmosis	0	1	1	1
Influenza, Seasonal (Hospitalized Cases)	138	62	52	3
Kawasaki Disease	1	0	0	0
Legionella	1	0	3	2
Listeria	0	0	1	0
Lyme Disease	62	70	63	71
Malaria	1	0	0	0
Measles	0	0	0	0
Meningococcal Disease	0	0	0	0
Mumps	0	0	0	0
Mycobacterial Disease (Non-Tuberculosis)	18	17	12	15
Parapertussis	0	1	0	1
Pertussis (Whooping Cough)	8	9	1	2
Q Fever	0	0	0	1
Salmonella	19	10	8	12
Shigella	3	1	0	0
Streptococcal Invasive Disease Group A/Group B/Other	7/18/0	6/18/3	5/10/0	1/3/0
Streptococcus Pneumoniae Invasive Disease	12	2	7	5
Syphilis	8	4	7	11
Toxoplasmosis	0	2	0	0
Tuberculosis	2	0	1	1
Tuberculosis Latent	34	22	15	21
Tularemia	0	0	0	1
Varicella (Chickenpox)	6	2	0	7
Vibriosis	1	1	0	0
VRSA/VISA	1	0	0	0
Yersiniosis	5	0	1	3

Data Source: PHAVR via WEDSS. These counts represent the number of communicable disease reports received by the Eau Claire City County Health Department and include confirmed, probable, and suspect cases.

*Excludes suspect cases due to data delays

COMMUNITY SURVEILLANCE:

An absenteeism surveillance program is conducted by the City-County Health Department each year to monitor for upper respiratory influenza-like activity as well as gastrointestinal illnesses. Absentee checks begin in October and end in May of each year.

E-mails are sent to the schools on Wednesday mornings for Tuesday absentees. The absentees to be reported include half and full day illnesses only. Absentees for doctor appointments, deer hunting, field trips, etc., are not counted. After the numbers are collected, the absentees are recorded, and absentee rates are calculated.

The schools surveyed in 2018-2020 were Sherman, Roosevelt, Meadowview, Sam Davey, Northwoods and Lakeshore Elementary Schools; South, DeLong, and NorthStar Middle Schools; Memorial, Regis, and North High Schools. Altoona, Augusta, and Fall Creek reported absentees to the Health Department for all grades.

Average Monthly Absentee Rates for Students - % of Total Student Enrollment Absent October 2018 through May 2019									
Enrollment	OCT.	NOV.	DEC.	JAN.	FEB.	MAR.	APR.	MAY	TOTAL
Elementary 3,496	1.40%	1.64%	2.28%	2.32%	2.37%	4.44%	1.42%	1.99%	2.23%
Middle 3,234	1.74%	2.13%	2.33%	2.37%	2.47%	2.86%	2.29%	2.40%	2.32%
High 4,069	2.64%	2.64%	3.83%	1.74%	2.18%	3.26%	2.30%	2.56%	2.52%

The peak of absenteeism during the 2018-2019 school year was in the week of March 12, 2019, in all schools surveyed.

Average Monthly Absentee Rates for Students - % of Total Student Enrollment Absent October 2019 through May 2020									
Enrollment	OCT.	NOV.	DEC.	JAN.	FEB.	MAR.	APR.	MAY	TOTAL
Elementary 3,504	1.64%	2.36%	2.59%	4.13%	4.67%	3.24%	N/A	N/A	3.11%
Middle 3,339	1.70%	2.43%	2.74%	3.43%	3.23%	3.01%	N/A	N/A	2.76%
High 4,150	3.57%	2.80%	3.30%	3.97%	3.93%	2.98%	N/A	N/A	3.43%

The peak of absenteeism during the 2019-2020 school year was in the week of February 4, 2020, in all school surveyed.

Due to COVID-19, all ECASD Schools were closed on March 16, 2020, and moved to a "Distance Learning" format through the end of the 2019-2020 school year. School illness related absenteeism surveillance was not resumed during the 2020-2021 and 2021-2022 school years. Absenteeism surveillance is planned to resume in the 2022-2023 school year.

The absenteeism survey proves to be helpful in determining when to acquire nose and throat cultures to isolate and identify the type of "flu-like" illnesses circulating in the Eau Claire community. This information combined with data collected from Urgent Care Centers and Hospital Emergency Department proves useful also to medical clinics and nursing homes so proper precautions can be followed with patients to reduce further spread.

EMERGENCY PREPAREDNESS PROGRAM:

As a public health department, we regularly prepare and plan for public health emergencies. The COVID-19 pandemic highlights the need for emergency preparedness. As part of this preparation, on January 22, 2020, the Incident Command System (ICS) was opened as we were hearing concerns about a possible pandemic. ICS remained in place to ensure we were able to respond effectively and efficiently to COVID-19. We followed up on cases, promoted testing, implemented large and small vaccination clinics, responded to calls, and consulted with the community for best practices. The health department collaborates with a broad range of county and state partners to assure that Eau Claire County is prepared to respond to public health emergencies primarily through a local Public Health Emergency Preparedness (PHEP) committee. The PHEP committee promotes development of preparedness policies and maintains partnerships in anticipation of future emergency response needs.

INFLUENZA IMMUNIZATIONS:

Influenza vaccination clinics are used to prepare for mass clinics needed in a pandemic. Each year the health department receives flu vaccine from the state and partners with area schools to offer flu vaccinations to the community. A table of the 2019-2021 Influenza Immunization Clinics follows:

Influenza Clinics 2019

Location	Immunizations
Altoona Elementary	118
Altoona Middle School	109
Augusta Community and Senior Center	15
Augusta High School	32
Chippewa Valley Free Clinic	12
Community Table Clinic	11
Delong Middle School	115
Eau Claire Health Department Clinics	76
Eau Claire Indoor Sports Center	160
Fall Creek Schools	95
Home Visits	14
North High School	58
Northstar Middle School	74
South Middle School	142
Total	1,031

Influenza Clinics 2020

Location	Immunizations
Augusta Community and Senior Center	119
Chippewa Valley Free Clinic	15
Eau Claire Health Department Clinics	59
Eau Claire Indoor Sports Center	222
Home Visits	3
North High School	191
Sojourner-Positive Avenues Shelter	7
Total	616

Influenza Clinics 2021

Location	Immunizations
Augusta Community and Senior Center	21
Chippewa Valley Free Clinic	15
Eau Claire Health Department Clinics	30
Eau Claire Co. Jail	20
Fahrman Center	9
Fairchild Sr. Apartments	3
Home Visits	10
Locust Lane	29
Manz Elementary	96
Memorial High School	30
Sherman Elementary	87
Sojourner-Positive Avenues Shelter	12
Total	362

The Health Department also continues to facilitate the work of local health care partners on the “Get the Shot” Committee to coordinate an influenza immunization campaign in the community.

SCHOOL IMMUNIZATION STATUS:

Wisconsin has laws that require immunization to protect students and children from diseases that are preventable by vaccination. Schools are required by state law to submit student immunization reports to the Wisconsin Department of Health Services (DHS) 40 days after the beginning of the school year. ECCCHD is responsible to ensure these reports are completed and submitted by all schools in Eau Claire County.

**SUMMARY OF IMMUNIZATION STATUS OF KINDERGARTEN CHILDREN
BY SCHOOL AS REPORTED BY THE SCHOOL PRINCIPAL, FALL 2019**

School	Kindergarten Enrollment	Immunizations Complete #	Immunizations Complete %	Immunizations		Waiver	No Record On File
				In Process	Behind Schedule		
Altoona	136	124	91%	0	1	11	0
Augusta	36	31	86%	0	2	3	0
Crestview Academy	21	18	86%	0	0	3	0
Fall Creek	66	60	91%	3	1	2	0
Flynn	36	36	100%	0	0	0	0
Immaculate Conception	34	32	94%	0	1	1	0
Lakeshore	62	58	94%	0	0	4	0
Locust Lane	45	41	91%	0	0	4	0
Longfellow	60	46	77%	0	0	14	0
Manz	76	74	97%	0	0	2	0
Meadowview	68	61	90%	0	0	7	0
Messiah Lutheran	15	9	60%	0	0	5	1
Montessori Charter	47	35	75%	0	0	12	0
Northwoods	67	61	91%	0	0	6	0
Putnam Heights	70	68	97%	0	0	2	0
Robbins	81	69	85%	0	1	11	0
Roosevelt	49	47	96%	0	0	2	0
St. James the Greater	16	15	94%	0	0	1	0
St. Mark's Lutheran	7	7	100%	0	0	0	0
St. Mary's Grade School	23	20	87%	2	0	1	0
Sam Davey	55	19	35%	0	30	0	6
Sherman	91	84	92%	0	2	5	0
Total	1161	1015	87%	5	38	96	7

**SUMMARY OF IMMUNIZATION STATUS OF KINDERGARTEN CHILDREN
BY SCHOOL AS REPORTED BY THE SCHOOL PRINCIPAL, FALL 2020**

School	Kindergarten Enrollment	Immunizations Complete #	Immunizations Complete %	Immunizations		Waiver	No Record On File
				In Process	Behind Schedule		
Altoona	-	-	-	-	-	-	-
Augusta	-	-	-	-	-	-	-
Crestview Academy	17	12	71%	0	1	4	0
Fall Creek	64	-	-	9	0	-	1
Flynn	49	45	92%	0	2	2	0
Immaculate Conception	40	-	-	0	0	-	0
Lakeshore	54	-	-	0	34	-	2
Locust Lane	58	-	-	0	5	-	1
Longfellow	52	-	-	0	4	-	0
Manz	57	-	-	0	0	-	0
Meadowview	50	-	-	0	0	-	0
Messiah Lutheran	11	7	64%	0	0	4	0
Montessori Charter	48	-	-	0	0	-	0
Northwoods	57	-	-	0	0	-	0
Putnam Heights	66	-	-	0	5	--	0
Robbins	99	-	-	0	0	-	0
Roosevelt	39	-	-	0	0	-	0
St. James the Greater	15	15	100%	0	0	0	0
St. Mark's Lutheran	10	-	-	0	0	-	0
St. Mary's Grade School	17	-	-	1	0	-	0
Sam Davey	-	-	-	-	-	-	-
Sherman	71	-	-	0	32	-	0
Total	900	79	82%*	10	83	10	4

*Total average of immunizations complete percentage for schools who submitted complete data. Data is incomplete due to reduced reporting during the COVID-19 pandemic

**SUMMARY OF IMMUNIZATION STATUS OF KINDERGARTEN CHILDREN
BY SCHOOL AS REPORTED BY THE SCHOOL PRINCIPAL, FALL 2021**

School	Kindergarten Enrollment	Immunizations Complete #	Immunizations Complete %	Immunizations		Waiver	No Record On File
				In Process	Behind Schedule		
Altoona	151	107	71%	0	19	1	24
Augusta	28	24	86%	0	1	3	0
Crestview Academy	18	15	83%	0	0	0	2
Fall Creek	64	57	89%	0	5	0	2
Flynn	37	33	89%	0	0	4	0
Immaculate Conception	38	32	84%	1	0	5	0
Lakeshore	56	51	91%	0	5	0	0
Locust Lane	51	44	86%	0	0	7	0
Longfellow	43	38	88%	0	2	3	0
Manz	53	47	89%	0	4	2	0
Meadowview	54	49	91%	0	0	5	0
Messiah Lutheran	14	8	43%	0	0	4	1
Montessori Charter	49	38	78%	0	0	11	0
Northwoods	54	48	89%	0	0	6	0
Putnam Heights	76	64	84%	0	7	4	1
Robbins	69	62	90%	0	1	6	0
Roosevelt	49	43	88%	0	0	6	0
St. James the Greater	13	10	77%	0	0	3	0
St. Mark's Lutheran	18	15	83%	0	0	3	0
St. Mary's Grade School	10	9	90%	1	0	0	0
Sam Davey	-	-	-	-	-	-	-
Sherman	97	89	92%	0	5	2	1
Total	1047	880	85%	2	51	74	31

WISCONSIN WELL WOMAN PROGRAM:

The Wisconsin Department of Health and Family Services, Division of Public Health administers the Wisconsin Well Woman Program (WWWP). The Eau Claire City-County Health Department has been contracted to be a multi-jurisdiction coordinating agency for 8 counties: Eau Claire, Chippewa, Dunn, Jackson, Pepin, Pierce, St. Croix, and Trempealeau.

WWWP pays for certain screenings, diagnostic tests and patient education services related to some of the most common health concerns of women. Eligibility standards focus on women between the age of 45-64 years, who have no or limited health insurance benefits and meet income guidelines (at or below 250% of federal poverty level). Women ages 35-44 years with breast symptoms may also qualify for breast screenings. The coordinator provides public education, distributes outreach materials to medical providers and to women, works with providers to meet program guidelines and provides educational materials to women enrolled in the program. Case management services included helping women access providers, educating on services offered, monitoring normal/abnormal screening results, and referring to community resources.

WWWP Screening Activity for the 8 Covered Counties Managed by the Eau Claire City-County Health Department				
	7/1/2017- 6/30/2018	7/1/2018- 6/30/2019	7/1/2019- 6/30/2020	7/1/2020- 6/30/2021
Percentage of Cervical Cancer Screenings	6%	42%	57%	26%
Percentage of Mammograms aged 50-64 yrs. (Goal 75%)	65%	64%	78%	55%
Total Enrolled	31	26	30	52

COMMUNITY HEALTH PROMOTION DIVISION

ADOLESCENT HEALTH:

Since 2016, the Health Department has partnered with local schools and community-based organizations through the Positive Youth Development grant, initially available from DPH MCH funding, then from DPH Rape Prevention Education funding. Starting in February 2020, we received new funding from DHS Sexual Violence Prevention Program Grant, a part of CDC Rape Prevention Education funding. Over the past three years, we have provided healthy relationship and sexual health programs at 9 different community-based organizations and schools throughout the Chippewa Valley.

2019: 222 youth received Healthy Relationship Programming

2020: 32 youth received Healthy Relationship Programming

2021: 155 youth received Healthy Relationship Programming

The programs implemented include the Safe Dates (teen dating violence prevention), HIP Teens and Street Smarts (both on sexual health risk reduction), and the 3R's program (Rights, Respect and Responsibility, a K-12 Sexuality Education Curriculum). We have also partnered with the UW- Eau Claire Nursing Program to provide education to young people with disabilities and adolescent health care providers using the Providers and Teens Communicating for Health (PATCH) Program curriculum. The PATCH Program focuses on helping young people, their families and their health care providers navigate the transition to adult health care. This program emphasizes knowing young people's health care rights and responsibilities as well as the importance of building a good relationship with your health care provider. Nursing students also utilized a needs assessment

to identify other health topics of interest to this group of young people and provided education on these topics including sexual health and mental health in 2019, 2020, and 2021.

ALCOHOL AND TOBACCO COMPLIANCE CHECK PROGRAMS:

Alcohol Compliance Checks have been supported by the Eau Claire City-County Health Department since 2004 in accordance with Wisconsin laws prohibiting the sale of alcoholic beverages to people under the age of 21. In partnership with our six law enforcement agencies, trained teams of four (2 adults and 2 buyers) investigate establishments that hold a license to sell or serve alcohol in Eau Claire County. Underage buyers are 18-20 years old for alcohol compliance checks (CCs). Checks are conducted randomly throughout the year. In 2019, 40 of 47 (85%) of the establishments checked did not sell alcohol to an underage buyer, complying with the law. Checks were not completed in 2020 and 2021 due to the COVID-19 pandemic.

Community Festivals Program: The Eau Claire City-County Health Department first conducted compliance checks at Country Jam in 2006 and the initial compliance check rate was only 33%. The Alliance has worked with Country Jam organizers along with the Sheriff's Department to decrease youth access to alcohol at the event for many years. Ten changes have been made to improve the policy and practices around underage drinking prevention. Expanded education of staff and volunteers, increased signage, improved processes, and new policies adopted by Country Jam have had significant impact in preventing sales to underage buyers. In 2019, there were 17 checks and 5 sales to underage buyers, therefore a 70% compliance check rate. Checks were not completed in 2020 and 2021 due to the COVID-19 pandemic.

Tobacco Compliance Checks have been supported by the Eau Claire City-County Health Department since 2002 in accordance with Wisconsin laws prohibiting the sale of tobacco products to people under the age of 18. In partnership with our six law enforcement agencies, trained teams of four (2 adults and 2 buyers) investigate establishments that hold a license to sell tobacco products in Eau Claire County. Underage buyers are 16-17 years old who try to purchase tobacco products.

Checks are conducted randomly throughout the year through the Wisconsin Wins Program. In 2019, 95% of the establishments checked did not sell tobacco to an underage buyer, complying with the law. Media outreach and public outreach activities were also done including newsletter articles, press releases, media interviews, thank you letters to compliant establishments, and educational information to noncompliant establishments. Only one round of checks was completed in 2020 before shut-downs due to COVID-19 with 100% of establishments checked not selling tobacco to an underage buyer. Checks were not completed in 2021 due to the COVID-19 pandemic.

ALCOHOL, TOBACCO, AND OTHER DRUG USE PREVENTION:

Alliance for Substance Abuse Prevention in Eau Claire County: The Alliance for Substance Misuse Prevention (Alliance) works to improve the lives of children, youth, and adults by mobilizing communities to prevent and treat alcohol, tobacco, and other drug misuse in Eau Claire County. Coalition membership includes a representation of 16 sectors across our community. The Alliance, formed in 2002, has the following prevention priorities: underage drinking, tobacco use, other drug use (prescription drug misuse and marijuana use) and early intervention and treatment. Grant support for the Alliance in reducing alcohol and other drug use among youth and adults in Eau Claire County and building its capacity to do so include the federal Strategic Prevention Framework - Partnerships For Success project funded by the Substance Abuse and Mental

Health Services Administration, and several state grants, including the Opioid Fatality Review project, The Opioid Data to Action project, the Tobacco Prevention and Control Project, WI Wins, and AODA prevention block grant funding. The Health Department serves as the grant fiscal agents for these projects. In addition to a facilitator for the Alliance, grants provide support for an epidemiologist, community health educators, and a public health specialist who work with Alliance projects.

ATOD Prevention in Schools: Alliance programs support the youth advocacy groups SAFE (Students Advocating for Excellence), formerly SADD (Students Against Destructive Decisions) at 6 high schools in Eau Claire County. With the support of Health Department staff and school advisors, SAFE groups plan activisms to educate peers and school leadership around substance misuse and other health issues important to youth. Alliance and health department staff also support other education and evidence-based practices for ATOD prevention in Eau Claire County schools. For example, we have provided significant support to schools related to issues surrounding students vaping, which continues to be a need across the county.

In 2020 and 2021, COVID-19 response presented challenges to working with schools on AODA prevention efforts. The Alliance and health department staff used the time where in person activities were not possible to improve procedures, resources, and materials, such as developing new agreements to support student SAFE groups, rebranding from SADD to SAFE to meet a student identified need and identifying new options for evidence-based and evidence-informed strategies to bring to schools once reopened.

- **2019:** SADD training with 41 students and 7 advisors attending the annual event sponsored by the Alliance in October. There were 9 guest speakers throughout the day who covered topics including healthy relationships, alcohol, tobacco, and other drugs, vaping, cyber safety, advocacy 101, and mental health. On the post training evaluation, 100% of students attending reported that they felt confident and have the needed resources to create an activism at their school.
- **2020:** Alliance and Health Department awarded the Tobacco Prevention and Control Catalyst Alliance grant and the SAMHSA Strategic Prevention Framework – Partnerships for Success grant, both of which include goals of youth substance misuse prevention, and youth engagement and work with county schools.
- **2020:** SADD rebranded as SAFE.
- **2021:** SAFE expectations and agreements created with 4 public school districts and 1 private school
- **2020 and 2021:** Created a 3-video series aimed at educating parents about vaping and promoted on local TV stations, social media, YouTube, and online advertisements. Videos were also shared with Alliance partners and county schools.

CHILD DEATH REVIEW TEAM:

The Community Health Promotion and Healthy Beginnings Division Managers participate in the countywide Child Death Review Team. With the goal of preventing future deaths, Eau Claire County team members from health, human services, law enforcement and higher education organizations met quarterly to (a) review deaths of persons under age 24 years, (b) uncover risk factors and circumstances influencing the death and (c) assure targeted prevention activities. The Eau Claire County Child Death Review Team was established in 2011 by Eau Claire County Department of Human Services in conjunction with the Children’s Health Alliance. In 2019, the team reviewed 6 children’s deaths in Eau Claire County. The team did not meet in 2020 or 2021 due to the COVID-19 pandemic.

CHRONIC DISEASE PREVENTION:

Chronic Disease Prevention was identified as a priority for Eau Claire County by the community through the 2020 Community Health Assessment. The Eau Claire City-County Health Department, in partnership with the WI Department of Health Services, received a chronic disease prevention and management grant in 2018, funded through the Centers for Disease Control and Prevention. This grant continues through 2023 and supports the Eau Claire City County Health Department to provide leadership for diabetes and heart disease prevention and management. The focus of this grant is to raise awareness and improve care and management of cardiovascular disease, diabetes, and prediabetes in Eau Claire County through creating and strengthening clinical services and community resource linkages and providing resources and education covering topics like type II diabetes prevention, healthy lifestyle habits, adult nutrition, and more. Programs supported by this funding in 2019-2021 have prioritized community partnerships, and have included work with pharmacies in Eau Claire and Augusta to provide medication therapy management assistance for patients with cardiovascular disease, communication and events to raise awareness in the county such as National Wear Red Day, setting up a referral system with health care systems to the Heart Health Ambassador program to help patients self-monitor and manage their blood pressure, partnering on activities with Eau Claire Healthy Community Chronic Disease Action Team, and coordination of the Eau Claire Government Center farmers' market near the WIC clinic.

Veggin' Out, a farmers' market nutrition education program at local farmers' markets including the government center location, aims to increase WIC Farmers' Market Nutrition Program redemption rates and to educate and engage all community members. Each year, students from UW-Stout's Dietetics and/or Nutritional Sciences programs, under the supervision of a Public Health Dietitian, gain hands-on experience with interactive nutrition education and assisting with the management of the program. Due to COVID-19 this partnership was paused in 2020 but resumed in 2021. Other chronic disease program activities supported by the Community Health Promotion division included promoting local diabetes self-management education and support (DSMES) and National Diabetes Prevention programs for people with diabetes and distributing wellness kits at senior centers and libraries throughout the county.

2019 Highlights: In 2019, 2,863 healthy food samples were provided, and 133 WIC families contacted through Veggin' Out at 3 local farmer's markets (River Prairie, EC downtown, and Eau Claire government center).

2020 Highlights: The community health promotion team distributed healthy lifestyle supplies such as orange peelers, water bottles, measuring spoons, and exercise resistance bands at local farmers' markets (200 educational materials and 134 healthy lifestyle supplies), and held 14 on-site farmer's markets. The team also successfully partnered with community agencies like Hope Gospel Mission, the Lion's Club, and the L.E. Philips Memorial Public Library to distribute 265 chronic disease prevention kits and information on heart health and exercise to those experiencing homelessness and poverty. Additionally, the team promoted available resources through media interviews, press releases, print articles, and social media posts.

2021 Highlights: In 2021, the Eau Claire Government Center market was held every Tuesday from June through September and featured healthy lifestyle information and samples with 828 educational materials, 418 kitchen utensils and exercise equipment, 339 samples, and 256 recipe books distributed. 720 chronic disease prevention kits with educational information were distributed to community members this year.

MENTAL HEALTH:

Mental Health Matters: In July 2017, community partners in both Chippewa and Eau Claire counties received funding from the Advancing a Healthier Wisconsin Endowment for a local grant entitled *Mental Health Matters: Promoting Resilience for Chippewa Valley Youth*. The Health Department serves as the fiscal agent for this five-year grant that brings community partners together to move beyond single-focus interventions driven by individual agencies, to strategic transformation of policy and systems changes. The community coalition aims to both decrease rates of youth depression and increase resiliency.

The specific goals of the grant are to:

- Increase the capacity of the youth-serving workforce across sectors to build protective factors and resilience for Eau Claire and Chippewa county youth.
 - In 2019, 734 youth-serving professionals from eight organizations participated in workshops focusing on Adverse Childhood Experiences (ACEs) and Resilience. 92% of attendees had an increase in knowledge.
 - In 2020, 210 youth-serving professionals from eight organizations participated in workshops focusing on Adverse Childhood Experiences (ACEs) and Resilience. 94% of attendees had an increase in knowledge.
 - In 2021, 139 youth-serving professionals from eight organizations participated in workshops focusing on Adverse Childhood Experiences (ACEs) and Resilience. 89% of attendees had an increase in knowledge.
- Build staff skills to contribute to positive school climates and youth social-emotional skills.
 - In 2019, 30 school staff participated in a six-session session course on mindfulness. Results of pre- and post-survey results showed 96% of staff agreed that mindfulness helped them cope with stressful situations. Staff reported positive coping and decreased stress for both them and their students. 32 Staff participated in three mindfulness coaching sessions. After the coaching session, 59% of staff reported they reached about half or more of their students with mindfulness strategies.
 - In 2020, 20 school staff participated in a six-session session course on mindfulness. Results of pre- and post-survey showed 89% of staff agreed that mindfulness helped them cope with stressful situations. Staff reported positive coping and decreased stress for both them and their students.
 - In 2021, 19 school staff participated in a six-session session course on mindfulness. Results of pre- and post-survey results showed 72% of staff agreed that mindfulness helped them cope with stressful situations. Staff reported positive coping and decreased stress for both them and their students. 10 Staff participated in three mindfulness coaching sessions. After the coaching session, 80% of staff reported they reached about half or more of their students with mindfulness strategies
- Create policy and change practice to improve youth mental health and resilience through use of a systematic, sustainable approach to data-driven decision-making.
 - In 2019, the Youth Risk Behavior Survey (YRBS) was conducted at Chippewa and Eau Claire County schools and a report was distributed with results.
 - In 2020, a youth mental health score card was developed and distributed throughout Eau Claire and Chippewa Counties.
 - In 2021, the Youth Risk Behavior Survey (YRBS) was conducted at Chippewa and Eau Claire County schools.

Suicide Prevention: Established in 2016, the Eau Claire County Suicide Death Review Team continues to review suicide cases to identify intervention and prevention strategies and recommendations, make system

changes, and collect local data. Members of the team include representatives from the health department, county and state human services, city and county police, university suicidologist, county corporation counsel, medical examiner, crisis response unit, hospital behavioral health representatives, private behavioral health clinic, school district, veterans' office, corrections, and free clinic family practice physician. The team met 7 times in 2019 and reviewed 17 cases, met 1 time in 2020 and reviewed 5 cases. The team did not meet after February 2020 through 2021 due to COVID-19 restrictions and response.

CHP staff support Question, Persuade, and Refer (QPR), an evidenced based suicide prevention training. QPR for adults was initiated county wide in 2015 by Mental Health Action Team. In 2016, because of DPH MCH funding, adolescent QPR was initiated. Staff continued to provide the training to adults in 2019 (220 adults) and early 2020 (19 adults) but did not provide QPR training in most of 2020 and all of 2021 due to COVID-19 restrictions. 1036 students received youth QPR in 2019, and 349 youth received youth QPR training in spring of 2020. Training was provided to school staff so that QPR could be delivered by health teachers as part of the health curriculum in 2020/2021 with several school districts participating.

The Health Department continues to serve on the Prevent Suicide Wisconsin Steering Committee. This team worked on updating the Healthy Wisconsin 2020 Suicide Prevention Strategy prior to pausing meeting due to COVID-19.

OPIOID MISUSE AND OVERDOSE PREVENTION:

The health department and Alliance support work on opioid misuse prevention through state funded grant projects, the Overdose Data to Action (OD2a) project that focuses on empowering individuals to make safer choices through expanding and enhancing local education around prescription and illicit opioid use, misuse, and addiction, and strengthening the ability to collect, analyze and apply local data. Through the Overdose Fatality Review (OFR) project also funded by the state of Wisconsin, the health department supported the Overdose fatality review team made up of a broad group of agency partners. The Health Department supports the Narcan Direct program, providing Narcan and training to agency staff to distribute in case they encounter an overdose, and the State Opioid Response project which includes providing medication lock boxes, bags, and medication deactivation units to promote safe medication storage and disposal in the community. Health Department staff work in collaboration with Marshfield health care system and local law enforcement to conduct prescription medication drop off events twice annually.

The OFR team continued to meet every other month in 2019 and reviewed 11 cases and made 2 recommendations. The team met once and reviewed 2 cases in 2020 prior to pausing meetings for remainder of 2020 and the first part of 2021 due to the COVID-19 pandemic. In 2021, 3 meetings were with 5 cases reviewed and 4 recommendations made. The OFR team also used implementation funding in 2021 to create an overdose leave behind packet with materials and resources for community members and family members who have experienced an overdose. This packet was a need identified through OFR team recommendations. The team printed 4000 packets with 13 agencies distributing packets in Eau Claire and Dunn counties.

Throughout 2020 and 2021, a video series was created to educate the community on safe medication storage and disposal which was distributed on local TV stations, social media, YouTube, and online advertisements. Videos were also shared with the Alliance and the OFR team. Then in 2021 another video series was created to educate the community about opioids and recognizing an overdose which was distributed on local TV stations, social media, YouTube, and online advertisements. Videos were also shared with the Alliance, the OFR team,

and other community partners.

Prescription medication take back events occurred in 2019, 2020, and 2021 and locations included Altoona Emergency Services, Augusta City Hall, Fall Creek Village Hall, Eau Claire County Government Center, Marshfield Medical Center – Eau Claire, Marshfield Clinic – Oakwood Center, and Marshfield Clinic- Riverview Center.

Pounds of Medication Collected:

	2019	2020	2021
Pounds of Medication Collected	6,199	2,693	2,280

Narcan Distribution:

	2020	2021
# Of Trainings	1	2
Boxes Distributed (2 doses/box)	2	62
# Staff Trained	12	75

Lock Boxes and Deactivation Units Distributed:

	2019	2020	2021
Lock Boxes/Bags Distributed	195	301	117
Deactivation Units Distributed	450	0	1,450

ENVIRONMENTAL SCIENCES DIVISION

AIR QUALITY PROTECTION:

The Health Department engages in a variety of activities regarding air quality protection. This include investigating air pollution complaints and enforcing local air quality regulations, investigating, and responding to concerns related to ambient air quality, which may include coordination and consultation with citizens, state regulatory agencies, and those contributing to the concern, responding to concerns that poor indoor air quality is causing health problems to the occupants, and providing guidance is provided on how to correct indoor air quality problems.

Incinerator Licensing: The county regulations require licensing of all incinerators. These are licensed by the Health Department.

Indoor Air Pollution: Residences and public buildings or places of employment are investigated for the presence of carbon monoxide, carbon dioxide, soot, mold, mercury, sewer gas, fumes, odors, or other indoor air pollutants because of complaints received.

Regulations: The Department is responsible for enforcement of the County Air Pollution Ordinance, which adopts the Department of Natural Resources regulations by reference. The Department also helps the City with enforcement of applicable City Code.

CERTIFIED PUBLIC HEALTH LABORATORY:

The Certified Public Health laboratory is comprised of a microbiological and chemistry division that conduct microbiological and chemical analyses on a variety of substances (e.g., water, dairy products, food, utensils, air) that effect public health. Sampling and analysis are conducted to ensure sample acceptability and compliance with public health and environmental standards for public health and welfare. The Health Department laboratory services Eau Claire County and provides services for a fee to many surrounding counties as well, both public and private businesses (e.g., well drilling companies, health departments).

Total Laboratory Samples and Analyses			
	2019	2020	2021
Microbiological Examinations	11,751	11,836	13,855
Total Chemical Samples	3,010	2,569	3,049
Total Chemical Analyses	6,752	5,110	5,893
Total Analyses	18,503	16,946	19,748

Chemistry Division: The laboratory receives samples such as water, soil, paints, and swabs in response to customers’ requests and to support environmental health field investigations.

Colilert/Colisure: These test methods are used for the detection and confirmation of total coliform bacteria (a type of bacteria found in the intestinal tract of humans and animals whose presence can indicate contamination). These methods can also detect the presence of E coli in drinking water, which is an indicator that harmful pathogens may also be in the water.

Food Testing: See Food Protection Section.

Heavy Metal Analysis: Testing for heavy metals is conducted utilizing the laboratory’s atomic absorption spectrophotometer (AAS). Examples of heavy metals tested on this instrument are lead, copper, chromium, arsenic, cadmium, iron, and zinc. Samples tested included drinking water from municipalities, private wells, dust swabs, and paint.

Nitrate Samples: Water samples (public and private) are tested in the chemistry lab to determine nitrate-nitrogen levels. A nitrate reading exceeding 10 ppm can be potentially dangerous, particularly to newborn infants, pregnant women, and cattle.

Organic Chemical Testing: Samples are analyzed for up to 59 separate volatile organic chemicals (VOC’s) using the laboratory’s gas chromatograph/mass spectrometer (GC/MS). Testing is offered annually to select private wells around the former city landfill in the Town of Union.

Pseudalert: This test method is used for the detection of *Pseudomonas aeruginosa* in therapy pools and whirlpools.

DRINKING WATER PROTECTION:

To protect drinking water in Eau Claire County, the Health Department partakes in several activities. Testing is an important part of this work, and staff promotes the testing of private water wells for containments, provide drinking water testing for contaminants such as fecal coliform bacteria, organic chemicals, nitrates, and metals such as lead, arsenic, and copper, and collect and analyze samples from municipal and transient non-community wells. They also review and issue well permits to assure proper location of new wells and require abandonment of unused and unsafe wells. Additionally, they provide consultation and work with the public to correct their drinking water problems and on measures they can take to prevent and treat contamination of their water source. If needed, staff also conduct epidemiological investigations of suspected and confirmed waterborne illness cases and outbreaks. Lastly, the department serves as a technical resource for the County Groundwater Advisory Committee where they assist with the identification and implementation of groundwater protection initiatives.

Municipal Drinking Water Supplies

The Health Department collects municipal water samples to test for coliform bacteria and residual chlorine from Altoona, Augusta, Fairchild, and Fall Creek. These samples are collected twice a month from various locations in each municipality as required by the safe drinking water law.

Eau Claire County Coliform Bacteriological Tests of Municipal Water				
		2019	2020	2021
Distribution Systems	Negative	192	180	180
	Positive	1	0	0
	% Positive	0.52%	0.0%	0.0%
Wells	Negative	60	62	58
	Positive	0	6	2
	% Positive	0.0%	8.8%	3.3%
Residual Chlorine Samples		198	191	193
Residual Chlorine Tests				
- Free Available		594	571	579
- Combined Available				
- Total Residual				

Newborn Infants Program: A grant for the testing of private water supplies serving families with newborn infants for arsenic, fluoride, lead, and copper was discontinued by the State Division of Public Health in 2012. Since this time, free testing for these contaminants, as well as Bacteria and Nitrate, have still been offered to any family with or expecting a newborn infant residing in Eau Claire County.

Newborn Infants Program			
	2019	2020	2021
Letters Sent to Families	154	77	107
% Of Families Participating (N)	24.7% (38)	62.3% (48)	43.0% (46)

Follow up action by department staff was initiated whenever a test result showed contamination beyond the maximum contaminant level (MCL) set forth in the Wisconsin Safe Drinking Water Code. A summary of the newborn water testing results is shown in the following table.

Newborn Water Testing Results				
Parameter Tested	Number of Samples			
	2019	2020	2021	Exceeding MCL (2019-2021)
Copper	38	48	46	9 (6.8%)
Lead	38	48	46	3 (2.3%)
Total Coliform (bacteria)	38	48	46	21 (15.9%)
Nitrate	38	48	46	6 (4.5%)
Fluoride	38	48	46	0 (0.0%)

Private Drinking Water Supplies

The Eau Claire County Sanitary Code requires that all premises intended for human occupancy shall be provided with an adequate supply of water that is safe and acceptable to drink. Recommendations are made by environmental health specialists and laboratory scientists to correct unsafe water supplies.

Eau Claire County Private Well Coliform Tests			
	2019	2020	2021
Negative	439	404	394
Positive	68	68	56
% Positive	13.4%	14.4%	12.4%

Eau Claire County Private Well E Coli Tests			
	2019	2020	2021
Negative	504	469	450
Positive	3	3	0
% Positive	0.59%	0.64%	0.0%

Eau Claire County Private Well Nitrate Samples Analyzed			
	2019	2020	2021
Total Samples not Exceeding Standard	300	248	263
Total Samples Exceeding Standard	21	19	19
% Exceeding Standard	6.5%	7.1%	6.7%

As a result of Eau Claire’s geology, some private wells consistently struggle to get safe water without treatment or modification. Safe water remains a focus of the lab and inspection team.

Wisconsin Well Code: The Health Department administers portions of the Wisconsin Well Code through the Wisconsin Department of Natural Resources County Well Delegation program. The Health Department participates in Delegation Levels 1 and 5. Level 1 is concerned with private well location and includes issuing permits and inspecting new wells for proper separation distance from contamination sources, adequate casing height and proper seals. Level 5 involves abandonment of wells either taken out of service or not in use. Wells not abandoned, or abandoned improperly, can provide a direct conduit to the groundwater from the ground surface and potentially pollute the groundwater.

The Health Department also maintains a contract with Wisconsin DNR to administer the Transient Non-Community water system program. Transient non-community water systems are individual water supply systems that serve facilities such as restaurants, motels, campgrounds, churches, and service stations. Transient non-community systems must be sampled for bacteria and nitrate annually and must undergo a comprehensive inspection once every 5 years. Action is initiated when problems with water safety or the condition of the system are encountered. Facilities with bacteriologically unsafe results are required to discontinue use of their water for drinking and food preparation until corrective actions were taken and follow-up samples test safe.

The department's lab also receives samples from new wells and well water after the pump is installed to ensure the supply is safe for consumption.

New Well Samples - Laboratory Analyses			
Coliform Tests			
	2019	2020	2021
Total Samples	57	55	64
Positive	8	13	16
% Positive	14.0%	23.6%	25.0%
Nitrate Tests			
	2019	2020	2021
Total Samples	57	54	62
# Exceeding Standard	6	3	10
% Exceeding Standard	10.5%	5.6%	16.1%

Pump Work Samples - Laboratory Analyses			
Coliform Tests			
	2019	2020	2021
Total Samples	236	283	263
Positive	25	32	23
% Positive	10.6%	11.3%	8.7%
Nitrate Tests			
	2019	2020	2021
Total Samples	188	220	189
# Exceeding Standard	20	29	16
% Exceeding Standard	10.6%	13.2%	8.5%
Arsenic Tests			
	2019	2020	2021
Total Samples	186	221	189
# Exceeding Standard	0	2	1
% Exceeding Standard	0.0%	0.9%	0.53%

Well Location Permit Program Activity Summary			
	2019	2020	2021
Consultations - (Levels 1, 3 & 5 combined)	290	325	251
Total no. Permits Issued	125	169	163
-New Well Permits Issued	99	132	128
-Replacement Well Permits Issued	25	36	27
-Reconstruction Permits	1	1	8
Completed Inspections	136	190	121
Installations – Non-complying	16	2	2
Wells Requiring Abandonment	25	34	27
Orders Issued	25	32	27
Completed Well Abandonments (City and County)	43	60	48

Level 3 - Inspection of Existing Systems Activity Summary			
	2019	2020	2021
Consultations (existing private and transient non-community)	167	139	79
Inspections/Investigations – Private	6	4	6
Inspections – Non-community	28	32	15
Orders/Directives Issued	4	2	2

Transient Non-Community Well Bacteria Tests			
	2019	2020	2021
Coliform Negative	152	137	107
Coliform Positive	24	11	10
% Coliform Positive	13.6%	7.4%	9.3%
E Coli Positive	4	0	0
% E Coli Positive	2.3%	0.0%	0.0%

Transient Non-Community Well Nitrate Tests			
	2019	2020	2021
Total Samples not Exceeding Standard	87	75	78
Total Samples Exceeding Standard	3	3	5
% Exceeding Standard	3.3%	3.8%	6.0%

Other Community Well Coliform Tests			
	2019	2020	2021
Negative	112	117	82
Positive	20	21	2
% Positive	15.2%	15.1%	2.4%

Other Community Well E Coli Tests			
	2019	2020	2021
Negative	132	138	84
Positive	0	0	0
% Positive	0.0%	0.0%	0.0%

Other Community Well Nitrate Tests			
	2019	2020	2021
Total Samples not Exceeding Standard	10	10	7
Total Samples Exceeding Standard	0	0	0
% Exceeding Standard	0.0%	0.0%	0.0%

MAINTENACE REPORTS AND COMPLIANCE:

Groundwater Surveillance and Testing: Groundwater contamination is a continuing concern to area residents. Health Department staff participates as a technical resource, for the Eau Claire County Board-appointed Groundwater Advisory Committee. The committee developed a groundwater management plan for Eau Claire County, published in 1994 and adopted by the County Board 1995. This plan was updated most recently in 2018. Activities associated with the implementation of this plan and technical support for the Groundwater Advisory Committee include evaluating available groundwater data and existing or proposed groundwater management policies and practices, as well as identifying and implementing priority recommendations related to groundwater protection, enhancement, and education in Eau Claire County. The Health Department also contributes to administration of the county sub-division ordinance by reviewing subdivision plat proposals, focusing on reducing the impact of up gradient contamination sources on private wells within proposed subdivisions and the impact of sanitary systems within the subdivision on wells.

Holding Tank Maintenance: Eau Claire County Sanitary Ordinance 8.12.240 requires holding tank owners to submit quarterly pumping reports that specify the amounts pumped, the dates of pumping, the name of the pumper, and the disposal location.

Holding Tanks			
	2019*	2020*	2021
Total Holding Tanks	246	N/A	246
% Of Compliant System Reporting (N)	N/A	N/A	93% (228)

*This measure was not tabulated at the end of 2019 or 2020 and we are not able to pull historic data.

Pretreatment Unit Maintenance: Owners of sanitary systems that include a pretreatment component are required to provide annual reports of inspection by a licensed maintainer. Follow-up with non-reporting property owners is ongoing. Prior to 2008, notification and follow-up activity had been limited.

Pretreatment Units			
	2019*	2020*	2021
Total Pretreatment Units	N/A	N/A	41
% Of Reports Filed (N)	93% (N/A)	N/A (228)	78 (32)

*This measure was not tabulated at the end of 2019 or 2020 and we are not able to pull historic data.

Septic Tank Maintenance: SPS 383 requires homeowners to maintain their septic systems by regularly having maintenance performed. At least once every three years, homeowners are sent a notice from the Health Department to achieve compliance. These notices are signed by a licensed Master Plumber or certified septic tank pumper and returned to the Health Department.

Septic Tanks			
	2019	2020	2021
Reports Due	2,571	2,535	2,986
% Of Reports Filed (N)	91% (2,329)	91% (2,297)	88% (2,642)

PRIVATE ONSITE WASTEWATER DISPOSAL:

A private onsite wastewater and treatment systems (POWTS) is also known as a sanitary or septic system. Its function is to collect household wastewater in a septic tank where biological processes digest solids and physical processes remove fats, oils, greases, and indigestible solids. Effluent (wastewater) exits the tank through a filter that removes suspended solids to an absorption system where it is discharged to the soil where microorganisms are removed and the clarified effluent percolates back into the groundwater. Some properties lack the necessary physical characteristics to allow for this type of system, therefore, on a case-by-case basis, are approved to have a holding tank installed.

The Health Department administers the County Sanitary Code, reviews plans, and issues permits for construction of POWTS, conducts inspections for all newly installed POWTS and enforces correction of failing systems. They also administer and enforce a state required maintenance program for all POWTS installed in Eau Claire County and/or within the city limits of Eau Claire

Audits/Evaluations: An annual audit of the POWTS program is conducted to check for compliance with the provisions of Wisconsin Administrative Code SPS 383, regulating POWTS design, construction, and maintenance. The audit looks at administrative procedures, sanitary permit data, POWTS maintenance and permit application reviews. The audit concluded that the program complied with statutory requirements.

Activity Summary – On-Site Waste Disposal Program			
	2019	2020	2021
Permits Issued and Plan Review			
Plan Approvals for At-Grades, Mounds, and In-Ground Pressure Systems	91	101	93
County Privy Permits Issued	11	12	10
County Reconnection Permits Issued	9	8	10
State Permits Issued by Type			
Non-Pressure Inground – New	39	35	49
Non-Pressure Inground – Replacement	60	67	53
At-Grades – New	7	8	10
At-Grades – Replacement	5	5	2
Mounds – New	48	48	62
Mounds – Replacement	24	30	20
In-Ground Pressure – Other New	1	1	0
In-Ground Pressure – Replacement	0	1	0
Holding Tanks – New	1	3	3
Holding Tanks – Replacement	2	1	1
Total State Sanitary Permits Issued	191	203	201
Other POWTS Activities			
Total Systems Installed	192	221	192
POWTS Inspections	354	314	308
Reconnection/Privy Inspections	9	9	16
Soil On-site Inspections	16	5	0
Sewage System Complaint Inspections	31	35	26
Legal Orders	13	5	8
Plat and Certified Survey Map Approvals	32	29	39
Consultations	1,053	1,248	1,165

Construction of New/Replacement Systems: The Eau Claire County Sanitary Ordinance designates that the Health Department review “Soil and Site Evaluation” reports, plans for proposed private on-site wastewater treatment systems (POWTS) and issue permits for POWTS construction. Inspection and approval by the Health Department is required prior to backfilling or use. The Health Department applied for and received approval to review plans for mounds, at-grade, and in-ground pressure sewage systems in 2001. As an agent for the Department of Safety and Professional Services (DSPS), the Health Department can provide quick service for the public.

POWTS Maintenance Program: This program has been developed to maintain compliance with laws requiring the Health Department to obtain and keep records of the maintenance of different types of POWTS. The Wisconsin State Legislature adopted Act 347 on April 14, 2006. This legislation created s.145.20(5) stats., which establishes the requirements for a private sewage system maintenance program. Wisconsin Administrative Code SPS 383.52 applies the maintenance program to all private sewage systems. These state

laws require the maintenance program to be administered by the local governmental unit responsible for the regulation of private sewage systems. This governmental unit is the Health Department in Eau Claire County. In May of 2007, the Eau Claire County Sanitary Code was revised to comply with new state laws regarding private onsite wastewater treatment systems (POWTS).

Section 8.12.220 of the Eau Claire County Health and Safety Ordinance requires that all POWTS be subject to a maintenance program. Wisconsin Administrative Code SPS 383 requires that the local 'governmental' unit, in this case the Health Department, notify all property owners of the POWTS maintenance requirements and follow up with non-compliance. The program is responsible for the implementation and monitoring of all POWTS installed in Eau Claire County as well as developing and/or providing maintenance and operation information for property owners. Funding for the program is generated through a special charge for the private treatment system, labeled SC Sewage, on the property tax bill.

POWTS Maintenance Program Activities			
	2019	2020	2021
Total Program Consultations (In-Office)	346	327	283
Consultations/System Verifications (On-Site Visits)	0	0	0
Compliance Investigations (On-Site Visits)	159	169	125
Batch Mailings (informational and maintenance notices)	18	14	14
Total maintenance reminder/warning notices sent (All system types)	4,335	4,184	3,701

RADIATION PROTECTION AND EMERGENCY PREPAREDNESS:

The radiation protection and emergency preparedness program includes administering the Regional Radon Information Center for a seven-county area, providing technical consultations on testing for radon and how to mitigate it when levels are above the standard, and participate in the state radiological response program as a trained radiological emergency response team to prevent and protect from any unnecessary exposure to radiation from the transportation, use or disposal of radioactive materials or radiation producing devices and products. Additionally, staff collaborates with appropriate first responders, County Emergency Management Coordinator, health care providers and other appropriate partners to address potential natural disasters, bio-terrorism response planning, chemical threats, and radiological preparation, actively participates in developing bio-terrorism response planning with a 12 county/tribe jurisdiction consortium, and engages in and regional training and planned tabletop and functional exercises with various bio-terrorism scenarios.

Radiation Protection: A Radiological Incident Response Plan has been developed by the State of Wisconsin to handle all radioactive emergencies at nuclear power plants in or near Wisconsin. The State of Wisconsin conducts the following activities: developing/conducting training statewide, local and utility emergency responders; procedure development; exercise scenario development; and participation in scheduled nuclear plant emergency preparedness exercises evaluated by the Federal Emergency Management Agency (FEMA). The state developed radiological emergency response teams statewide, consisting of field team members in various locations throughout Wisconsin.

The local radiological emergency response team consists of three environmental health specialists. This team regularly participates in field radiological response exercises at the Prairie Island Nuclear Power Plant. These trainings maintain a statewide radiological field team presence and to exercise the State's radiological

emergency response plan. Additionally, the Civil Support Team (CST), consisting of Army and Air National Guard personnel and area HazMat teams all train together at these exercises.

RECREATIONAL WATERS:

Beaches – Water Quality: Weekly water quality and cleanliness inspections are made at Big Falls, Lake Altoona, Riverview Park, Coon Fork, Half Moon Lake, and Lake Eau Claire from May through August. Other popular swimming locations, such as beaches along the Eau Claire River are also sampled on a weekly basis. A level of 1,000 *E. coli* bacteria per 100 ml of water is used as the limit for considering a beach water sample as unsafe and requiring closure. Levels above 235 *E. coli* bacteria per 100 ml of water and algae blooms prompt more frequent testing.

Beach Closures (# of days)			
	2019	2020	2021
Big Falls	13	19	7
Lake Altoona	21	28	13
Riverview Park	10	2	40
Half Moon Lake	10	9	19
Coon Fork	15	13	3
Lake Eau Claire	9	12	0
Total Closures	78	83	82

Algae Advisories (# of days)			
	2019	2020	2021
Big Falls	0	0	0
Lake Altoona	0	10	34
Riverview Park	0	0	0
Half Moon Lake	0	0	0
Coon Fork	0	0	0
Lake Eau Claire	7	3	6
Total Advisories	7	13	40

Swimming Pools: Monthly water quality and cleanliness inspections were made at all swimming pools including public pools, schools, motels, private clubs, and apartment and condominium complexes. Inspections, reinspections, and investigations are conducted regarding pool equipment and any significant water quality problems.

Swimming Pools/Water Attractions			
	2019	2020	2021
Total Number of Licensed Features	56	57	54
Pre-inspections	3	3	2
Routine Inspections	64	18	47
Reinspections	30	9	13
Complaints	6	3	3
Consultations	35	6	4
Total Inspections (includes all types)	116	47	72

Swimming Pools and Beach Laboratory Sampling: Eau Claire City and County pools, whirlpools, and therapy pools are sampled monthly. Beaches are sampled weekly during the summer months for water quality and cleanliness. The following table summarizes the recreational water samples analyzed by the laboratory for Eau Claire County. Additionally, samples are analyzed for beaches in Chippewa, and Clark Counties. Out-of-county data is contained in the “Certified Public Health Laboratory” section of this report.

EC County Recreation Water Samples – Bacteriological Summary				
		2019	2020	2021
Pools	Pseudomonas Satisfactory	182	109	112
	Pseudomonas Unsatisfactory	8	3	6
	% Unsatisfactory	4.2%	2.7%	5.1%
Beaches	E Coli Satisfactory	253	282	315
	E Coli Unsatisfactory	96	112	116
	% Unsatisfactory	27.5%	28.4%	26.9%

RODENT, INSECT RABIES, AND VECTOR CONTROL:

This program is responsible for a variety of components including providing consultation and information to the public on eliminating or controlling rodents, insects, and other animals capable of causing or transmitting disease to humans, investigating and enforce state, city and county rules regarding insect, rodent, and animal infestation problems of public health importance, and providing consultation and other resources to address vector borne diseases.

Additionally staff partners with the Eau Claire City Police Department and County Humane Association to enforce city and county regulations on reported animal bites and pet quarantines, advises the public and health care clinicians on appropriate measures to take when an individual is bitten by a domestic pet or a wild animal, and the appropriate preventive measures when following up on potential rabies cases, and conduct countywide rabies vaccination clinics for dogs, cats and ferrets every other year, in cooperation with Eau Claire County veterinarians.

Animal Bites and Rabies Control: The Health Department is approved by the Department of Agriculture, Trade and Consumer Protection to administer a local rabies control program as required by Wis. Stats. 95.21(9)(b), and further outlined in Wis. Adm. Code ATCP 13. This program is authorized by local ordinance.

Bites/Exposures: People reported bitten by or exposed to animals and animals reported bitten or exposed to a wild animal.

Bites/ Exposures			
	2019	2020	2021
Dog Bites	85	72	92
Cat Bites	19	20	30
Ferret Bites	0	0	0
Miscellaneous	57	28	29
Total Reported Bites/ Exposures:	161	120	151

Immunization Information: During bite investigations, the current immunization status of the animal(s) involved in incidents are reviewed and recorded. These findings are used to help determine animal quarantine orders as well as animal and human treatment options.

Current Immunization Status of Animals Involved in Incidents			
	2021	2020	2019
Dogs	78%	87%	78%
Cats	20%	50%	47%

Lyme Disease and other Tick-Borne Disease Prevention: Health Department staff annually conduct sampling activities for ticks at various parks. Laboratory scientists utilize PCR testing to assess the presence of multiple pathogens in the ticks that are collected, including the species of bacteria that are known to cause Lyme Disease and Ehrlichiosis. In 2019, the Health Department partnered with the U.S. Centers for Disease Control and Prevention (CDC) to evaluate additional pathogens of concern. Tick-borne disease prevention is a primary focus of community education outreach activities. The Health Department has also partnered with the Midwest Center of Excellence for Vector Borne Disease, which is located at the University of Wisconsin, to conduct local surveillance and prevention projects.

Post-Exposure Prophylaxis: Post-Exposure Prophylaxis (PEP) is initiated when people are exposed to animals/specimens that were either:

- Positive for rabies
- Too decomposed for testing
- Not available for testing
- Had equivocal results

Post-Exposure Prophylaxis Initiated				
2017	2018	2019	2020	2021
17	8	10	13	18

Quarantine Information: Those animals with current rabies vaccination and that do not exhibit symptoms of rabies may be quarantined (confined) at home but are required to be examined by a licensed veterinarian within 24 hours of receiving a quarantine notice and again on the 10th day after the date of the bite. A cooperative effort exists between the Municipal Police, the County Humane Officers, and the Department to carry out this program.

- Domestic pets exposed to wild animals that tested positive for rabies or wild animals that are not available for testing require special quarantine.
- Immunized pets are placed under a 60-day quarantine.
- Unimmunized pets are either euthanized or put into a 180-day quarantine.

Quarantine Information			
	2019	2020	2021
Veterinarian/Home Quarantines (Unimmunized)	23	16	20
Veterinarian/Home Quarantines (Immunized)	75	73	78

Rabies Testing Information: The Wisconsin State Laboratory of Hygiene (WSLH) conducted testing for the rabies virus on animals/specimens shipped to the WSLH as follows:

Rabies Testing Information			
	2019	2020	2021
Total Animals Sent to WSLH	51	43	48

West Nile Virus: Mosquito control is an important and basic public health function. Standing water is the primary source for breeding mosquitoes, specifically the culex species which is most likely to transmit West Nile Virus (WNV) to humans. The Eau Claire City-County Health Department has worked on various educational, surveillance and control activities to help control the spread of WNV. Environmental Health staff conduct annual surveillance activities for mosquitos through sampling (traps) and laboratory identification. Staff also investigate complaints regarding mosquito-breeding areas or other high-risk locations.

FAMILY PLANNING CLINIC

CLINIC VISITS:

The Family Planning clinic goals include reducing unintended pregnancies and decreasing sexually transmitted infections in the Eau Claire area.

	2019	2020	2021
Pregnancy Tests Administered	75	72	111
Sexually Transmitted Infection Screenings (including chlamydia, gonorrhea, herpes, and syphilis)	765	556	543
Total Patients	626	406	427
Total Visits	1129	804	906

COLPOSCOPY PROGRAM:

The Family Planning Clinic (FPC) is dedicated to enhancing capacity and clinical services for clients through delivery of affordable colposcopy procedures for those in the community who are uninsured. A colposcopy is often recommended after a cervical cancer screening test, such as a Papanicolaou (Pap) test, reveals an abnormal result. The FPC began offering this service in 2020 after hiring a nurse practitioner. In 2020, 38 clients received a Pap test through the FPC. One of these clients then also received a colposcopy procedure. The detection of cervical precancer and other conditions is a valuable service and significant benefit to women in our community.

In 2021, 70 clients received a Pap test through the FPC. Seven of these clients then also received a colposcopy procedure. The FPC also received a Health Care Education and Training (HCET) grant to assist in purchasing items and supplies to support growth of the colposcopy program.

ELECTRONIC MEDICAL RECORDS SYSTEM:

In 2019, after months of planning and training, an Electronic Medical Records System (EMR) was implemented and increases the function and resources of the clinic. The new EMR allows the team to reduce storage costs, improve communication between nurses and clients, and provides opportunities to expand billing capacity.

GET YOURSELF TESTED:

The family planning clinic continued its long-standing participation in the Get Yourself Tested (GYT) campaign to increase public awareness of the importance of STI testing, and to provide confidential, convenient, low-cost tests and treatment. As part of this campaign, the FPC promoted risk awareness and conducted outreach and promotion of its services through events in the community. As part of the outreach events, FPC staff can provide free on-site STI testing, distribute contraceptive and menstrual products and educate on various reproductive health topics.

In 2019 specific events included:

- Attending a Career Venture event for middle/high school students and sharing about careers in public health, including public health nurses that work in a family planning clinic.
- Participating in a Phoenix Park- Music in the Park event
- HIV Testing event with AIDS Resource Center of WI.
- Advertising its services in an innovative way to individuals under 25—the population most likely to be affected by a sexually transmitted infection. Clinic information, resources, and condoms were packaged in a dry bag—a device used to keep electronics and other valuables safe while on the water—and handed to ~50 tubers on the Chippewa River. Staff explained the Family Planning Clinic, services provided, and its location.
- Participated in a Pop-Up Food Pantry event outside Eau Claire Senior Center.
- Participated in the UWEC Women & Gender Studies Picnic.
- Participated in the UWEC meets EC event for freshman students.
- Held a GYT clinic at McKinley Charter School.
- Coordinating a testing event with ARCW at Scooters Bar. We offered onsite HIV, HEP C and Syphilis testing.

In 2020 there were limited activities due to COVID, however we:

- Partnered with UWEC to hand out condoms and hand sanitizers to students living in residence halls.
- Gave out glow in the dark condoms for Halloween in our clinic.
- Promoted a "Wrap it up" campaign giving away free wrapping paper to people who made an appointment in December.
- Created a safe dating during COVID kit with a face mask that says, "wear one", condoms in a compact case and a post card with tips about dating.

In 2021 events included:

- Three Thursdays in April teaching at McKinley Charter School
- Participating in the Pride Picnic at Phoenix Park
- Participating in a Phoenix Park- Music in the Park event
- Participating in the UW- Eau Claire college freshman orientation
- Held events at Bolton House; Feed My People Pop up Pantry; and at Scooter's Bar

HIV-PARTNER SERVICES:

Below is a table with the number of cases our regional HIV Partner Service providers followed-up on in our 14-county jurisdiction. These counties are Clark, Douglas, Eau Claire, Chippewa, Burnett, Rusk, Barron, Bayfield, Washburn, Pierce, Pepin, Polk, Dunn, and St. Croix.

HIV Partner Service Follow-Ups			
	2019	2020	2021
Number of Cases Followed-Up On	1	16	16

REGIONAL SHARED SERVICES MODEL:

In 2019, the FPC joined with four other Western Wisconsin Counties to look at regionalizing a variety of specialized reproductive health services. Providing these services regionally creates opportunities to better meet the needs of our populations, particularly in rural areas and smaller counties. We expect to see a reduction in client time and cost as they will be able to access services on site that were previously referred out to other providers.

In 2020, we instituted a new model for providing nurse practitioner services in the western region of Wisconsin. The ECCCHD hired a full-time nurse practitioner to provide family planning services in five counties – Eau Claire, Dunn, Pepin, Pierce, and St. Croix. This innovative partnership arrangement supports high-quality, accessible, and sustainable nurse practitioner services to populations that my otherwise not have access. This position can assess and diagnose more complex cases and perform specific procedures like Nexplanon and IUD insertion/removal and colposcopies. The following year, 20201, was the first full year utilizing a regional, shared nurse practitioner.

TELEHEALTH:

At the onset of the COVID-19 pandemic, the FPC began offering virtual telehealth visits so patients could receive family planning services with limited in-person interactions. This helped prevent the spread of infectious disease between visitors and staff, and for some patients made appointments more easily accessible by eliminating travel time to and from the clinic. We were able to continue to provide basic essential services related to pregnancy prevention and reproductive health.

TITLE X RECIPIENT:

The clinic became a sub-recipient of a Title X grant. This federal funding prioritizes serving people and families with low incomes. Many of the services offered in the FPC are supported by this funding, allowing members of our community to meet reproductive health needs they may not otherwise be able to afford.

WISCONSIN FAMILY PLANNING REPRODUCXTIVE HEALTH ASSOCIATION:

A FPC public health nurse served as president of the Wisconsin Family Planning Reproductive Health Association (WFPRHA) in 2019. Members of the association work with governmental health agencies and private organizations to bring together family planning providers to strengthen and maintain high-quality family planning services in Wisconsin.

In 2021, several ECCCHD FPC staff participated with the Wisconsin Family Planning Reproductive Health Association (WFPRHA) in a state-wide collaborative to update and revise the nursing protocols utilized by clinics to be presented to the State. Additionally, in 2021 two of our FPC staff served on the board of WFPRHA

HEALTHY BEGINNINGS DIVISION

FARMERS' MARKET NUTRITION PROGRAM:

The WIC Farmers' Market Nutrition Program continued in Eau Claire County during the summers of 2019-2021. This program provides participants in the WIC Program with vouchers to purchase fresh fruits, vegetables and herbs at authorized Farmers' Markets and Farm Stands throughout Wisconsin. The goal of the WIC Farmers' Market Nutrition Program is to provide fresh, unprepared, locally grown fruits and vegetables to WIC participants and to expand the awareness, use of and sales at farmers' markets. Participants receive a list of locations, dates and times that local area Farmers' Markets and Farm Stands will be open. Participants receive a list of locations, dates and times that local area Farmers' Markets and Farm Stands will be open. Markets in Eau Claire County included Phoenix Park, Festival Foods, River Prairie, and the Eau Claire City-County Health Department. Farm Stands in Eau Claire County included Hillview Farm, McIlquham Orchard, and Avenue Orchard. In 2019, each WIC family received \$25.00 in market vouchers for the summer which they could use to purchase fruits, vegetables or herbs at authorized Farmers' Markets or Farm Stands. In 2020, each family saw an increase in Farmers' Market benefits and received \$30.00 in market vouchers. In 2021, for the first time in our state, each eligible and interested WIC participant in the family received a complete booklet of Farmers' Market vouchers worth \$30.00.

A total of 846 families received these coupons through the WIC Program during the summer of 2019, 784 families in 2020, and 1,520 WIC participants in 2021.

The on-site farmers' market, located at an entrance of the Eau Claire County Government Center closest to our WIC clinic, continued each year (2019-2021). The market was aimed at increasing accessibility to locally grown, fresh fruits and vegetables for families using the WIC Farmers' Market Nutrition Program, but also reached all government center employees and neighborhood residents.

FIRST BREATH PROGRAM

All Healthy Beginnings nurses, as well as WIC dietitians participate in the First Breath program, which is through the Wisconsin Women's Health Foundation. All WIC Dietitians were trained to offer and administer the First Breath program to WIC families with the overall goal of helping pregnant women, new moms and their families quit smoking. In 2019, staff enrolled 18 clients in the program, offering resources and support to help women remain tobacco-free during pregnancy. In 2020, staff enrolled 11 clients in the program. In 2021, staff enrolled 7 clients in the program. COVID-19 and the inability to see clients in person greatly impacted this program.

FIT FAMILIES:

Fit Families is a successful behavior change program targeting primarily low-income families of 2-4-year-old children that continued in 2019, 2020, and 2021. Three registered dietitian nutritionists (RDNs) are 'Fit Families Coaches' and engaged in monthly coaching with 55 families to support them in making healthy changes in fruit/vegetable consumption, sweetened beverage consumption, screen time, and physical activity. In addition to individual approaches, Fit Families incorporates organizational, community, and public health approaches to create healthy supportive environments.

KIDS RIDE SAFE PROJECT:

The WIC program continued the Kids Ride Safe project. In 2019, 33 seats were distributed to families in need who would otherwise be unable to access car seats for the safety of their infants. In 2020, 32 seats were distributed. In 2021, 33 seats were distributed.

MY BABY & ME PROGRAM:

The public health nursing staff participates in My Baby and Me program, which is a program offered through the Wisconsin Women's Health Foundation. Through My Baby and Me, women enrolled in Prenatal Care Coordination/Nurse-Family Partnership were screened for alcohol use during pregnancy. Of those screened clients, those that were referred to My Baby and Me and received individual counseling sessions, support, and resources to remain alcohol-free throughout their pregnancy. In 2019, 23 women were referred & enrolled. In 2020, 10 women were referred and enrolled. There were no referrals or enrollments in 2021.

NEWBORN HEART, HEARING, AND BLOOD SCREENING:

A public health nurse continued newborn hearing and heart screening via blood oxygen sensor for newborns delivered at home and not otherwise screened, such as rural Amish. The instruments and training are provided by the Newborn Hearing Screening and the Wisconsin SHINE (Screening Hearts In Newborns) projects of the Wisconsin Department of Health Services. 104 Newborn Hearing Screenings were completed, and 104 blood specimens were collected for newborn screening throughout 2019. 100% of the specimens were received by the State Lab of Hygiene within the target 4 days after collection. In 2020, 136 Newborn Hearing Screenings and 136 blood specimens were collected. In 2021, 120 Newborn Hearing Screenings and 136 blood specimens were collected. These services meet an otherwise unmet need for families that lack other access to recommended newborn screening.

NURSE-FAMILY PARTNERSHIP®:

Nurse-Family Partnership®, a maternal and child health program, helps low-income, first-time moms with the support they need to become confident parents and strong women, and ultimately, give their babies the best possible start in life.

Public health nurses are the backbone of Nurse-Family Partnership's success. Because of their specialized knowledge, the nurses who deliver this program establish trusted relationships with young, at-risk mothers by providing home visits that are designed around three goals: a healthy pregnancy and delivery, baby's good health and development, and the woman's vision and goals for her future. We are in a consortium (Western Wisconsin Nurse-Family Partnership Consortium) which includes Chippewa, Dunn, and Eau Claire Counties. Collaboration is an important part of the success of Nurse-Family Partnership in each of the counties.

Women voluntarily enroll as early as possible and one of our trusted, respected, and compassionate public health nurses visits her from pregnancy until her baby turns 2-years old. Nurse-Family Partnership changes the lives of our most vulnerable citizens, and thereby creates a better, safer, and stronger community, not just for today but for generations to come.

In 2019 through 2021, our Consortium accomplished:

- **2019:**
 - 181 clients served
 - 1,405 visits
 - Breastfeeding initiation rate: 88%
 - Babies born at a Healthy weight (more than 2500 grams/5.5#): 90%
 - We held our first tri-county Nurse-Family Partnership Community Advisory Board meeting
 - We partnered with the Family Resource Center of Eau Claire to offer a Parent Café to our NFP clients
 - We implemented the Crock Pot Project and distributed 20 crock pots, recipes, and ingredients for a healthy meal to families
- **2020:**
 - 240 clients served
 - 1,509 visits
 - Breastfeeding initiation rate: 86%
 - Babies born at a Healthy weight (more than 2500 grams/5.5#): 99.9%
 - Received Family Foundations grant and joined other home visiting agencies throughout Wisconsin in receiving federal MIECHV (Maternal, Infant, Early Childhood Home Visiting) funding
 - At the onset of COVID-19 we moved to 100% telehealth visits. Our nurse home visitors also fulfilled roles in COVID-19 relief all while maintaining their home visiting caseload.
 - We began working with a mental health consultant who provided monthly reflective supervision for our team.
- **2021:**
 - 231 clients served
 - 1,492 visits
 - Breastfeeding initiation rate: 88%
 - Babies born at a Healthy weight (more than 2500grams/5.5#): 99.95%
 - Representative Jesse James joined our Community Advisory Board as an active member. Congressman Ron Kind requested to meet with NFP Administrator and Supervisor to discuss home visiting needs in the Chippewa Valley and learn about NFP.

Race (Eau Claire & Chippewa)	2018	2019	2020	2021
Black/African American	7%	2%	11%	4%
White	79%	82%	78%	89%
American Indian/Alaska Native	0%	4%	0%	0%
Asian/Pacific Islander	5%	9%	3%	4%
Multiracial	12%	0%	5%	2%
Native Hawaiian/Pacific Islander	0%	0%	0%	2%
Declined/Missing Data	7%	3%	3%	0%

Ethnicity: (Eau Claire & Chippewa)	2018	2019	2020	2021
Non-Hispanic	89%	93%	86%	85%
Hispanic	9%	7%	14%	15%
Declined/Missing Data	2%	0%	0%	0%

NUTRITION EDUCATION:

WIC participants are certified for a period of up to one year. Individual nutrition counseling is provided by a public health nutritionist who is a Registered Dietitian Nutritionist at each appointment. Nutrition counseling is based on the participant’s needs and includes anticipatory counseling as needed. Participants are also offered and encouraged to engage in nutrition education opportunities during their certification period. Public health nutritionists offer a variety of nutrition education opportunities for learning throughout their certification period that meet their needs and interests.

The types of opportunities offered in 2019 Included:

1. One-on-one sessions with a registered dietitian
2. WICHealth.org: Self-paced online learning modules with a variety of infant, child, maternal, and family health and nutrition topics
3. Head Start Family Cooking Events: A fun evening of reading and cooking offered to all families in our community
4. Veggin’ Out at the Farmers Market: Interactive cooking demonstrations where clients receive food samples, recipes, and tips for shopping at a farmers’ market
5. Breastfeeding classes
6. In partnership with the Eau Claire Area School District Head Start Program, public health dietitians and WIC screeners provided nutrition screening and education for over 108 low-income children enrolled in the Head Start program.

Nutrition education options in 2020 and 2021 were limited due to COVID-19. All in-person options were put on hold. The WIC Dietitians began offering telehealth nutrition education for everyone. Breastfeeding classes were also offered virtually.

PRENATAL CARE COORDINATION BENEFIT SERVICES:

The Health Department continues as a Medicaid-certified provider of the Prenatal Care Coordination benefit services. Through this benefit, services are provided to pregnant women at high risk for adverse pregnancy outcomes and their newborns during the first two months of life. There are two programs that the Health Department offers that utilize this benefit, Healthy Beginnings+ and Nurse Family Partnership. In 2019, dietitians and nurses provided 272 risk assessments to determine program eligibility. In 2020, 146 risk assessments were provided and in 2021, 192 risk assessments were provided. In addition to nurse visits, dietitians also work with the clients on identified nutritional needs. In 2019, 45 follow up visits were conducted by the dietitians. In 2020 and 2021 there were 4 and 28 follow up visits respectively.

WIC GROCERY STORES AND PHARMACIES:

Eau Claire grocery stores and pharmacies continue to be an important partner in the WIC Program, as they redeem drafts and electronic benefits according to state and federal regulations. Please see the following chart for food dollars redeemed at area grocery stores and pharmacies. The WIC Program appreciates the continued support of the area vendors. The combination of nutritious supplemental foods and nutrition education within the WIC Program continues to have a positive impact on the health of children.

WIC FOOD DOLLARS REDEEMED AT VENDORS IN EAU CLAIRE COUNTY JANUARY 1, 2019 – DECEMBER 31, 2019	
Vendor Name	Dollars Redeemed
Ameriental Food Store	\$21,956
Festival Foods, Birch Street	\$81,501
Festival Foods, Mall Drive	\$85,641
Festival Foods, N. Clairemont Ave	\$95,290
Gordy's County Market, W. Clairemont Ave (Closed May 2019)	\$3,984
Great Lakes Fresh Market, Augusta (Closed November 2019)	\$10,508
Hansen's IGA	\$6,024
Lance's Fresh Market, Augusta (Opened November 2019)	\$1,747
Target	\$46,278
Walgreens – Clairemont Avenue	\$6,341
Walgreens – Hastings Way	\$10,828
Walmart	\$427,278
Woodman's Food Market	\$173,603
Total	\$971,389

WIC FOOD DOLLARS REDEEMED AT VENDORS IN EAU CLAIRE COUNTY JANUARY 1, 2020 – DECEMBER 31, 2020	
Vendor Name	Dollars Redeemed
Ameriental Food Store (Closed March 2020)	\$2,966
Festival Foods, Birch Street	\$92,927
Festival Foods, Mall Drive	\$81,678
Festival Foods, N. Clairemont Ave	\$110,255
Lance's Fresh Market, Augusta	\$17,869
Target	\$47,637
Walgreens – Clairemont Avenue	\$9,469
Walgreens – Hastings Way	\$18,226
Walmart	\$375,201
Woodman's Food Market	\$164,219
Total	\$920,447

**WIC FOOD DOLLARS REDEEMED AT VENDORS IN EAU CLAIRE COUNTY
JANUARY 1, 2021 – DECEMBER 31, 2021**

Vendor Name	Dollars Redeemed
Festival Foods, Birch Street	\$63,096
Festival Foods, Mall Drive	\$61,975
Festival Foods, N. Clairemont Ave	\$76,731
Hy-Vee (Opened October 2021)	\$13,867
Lance's Fresh Market, Augusta	\$10,844
Target	\$56,913
Walgreens – Clairemont Avenue	\$6,012
Walgreens – Hastings Way	\$17,090
Walmart	\$413,892
Woodman's Food Market	\$165,229
Total	\$885,649

WIC OUTREACH:

Health Educators continue to work with the WIC Director and WIC Project Nutritionist to promote the WIC Program throughout Eau Claire County. The following avenues were utilized in 2019 for WIC outreach:

- Distributed outreach materials to: Eau Claire Area School Districts and Early Learning Programs; healthcare systems; and to local businesses, non-profits and organizations located in Eau Claire, Altoona, Fall Creek, Augusta, and Fairchild.
- Participated in community outreach events such as: Baby Bonanza at the L.E. Phillips Memorial Public Library, Breakfast in the Valley, Altoona Childhood Development Days and Phoenix Park Music Night.
- Coordinated print ads in EC4T Newsletter, Family Times, Chippewa Valley Family, Senior Review, City of Eau Claire Newsletter, Leader Telegram Supplement and Child Care Directory.
- Coordinated regular Facebook posts promoting the WIC program and breastfeeding.

In-person outreach efforts were halted in 2020 and 2021 due to COVID-19. We continued to utilize print ads and social media outlets for outreach. The State WIC office also contracted with a strategic communications agency to develop a statewide outreach campaign which we participate in by utilizing their developed materials (both print and digital). We continued to distribute outreach materials to partner agencies throughout the pandemic.

WIC PROGRAM PARTICIPATION:

The Special Supplemental Nutrition Program for Women, Infants, and Children (WIC Program) in Eau Claire County was funded to serve 1,712 participants per month during 2019, 1594 participants per month in 2020, and 1485 participants per month in 2021.

The Eau Claire City-County WIC Program serves pregnant, breastfeeding, and postpartum women, infants, and children up to the age of five years. A total of 2,583 individuals participated in the WIC Program during this past year. Please see the following chart for WIC participation during 2018. The WIC Program serves as an adjunct to health care during critical times of growth and development by providing participants with

nutritious supplemental foods, nutrition and health education, and referrals to area physicians, public health nurses and other community services.

An Eau Claire City or County woman, infant or child who meets the income eligibility requirements of the WIC Program is seen at a WIC clinic in Eau Claire or Augusta. Applicants are screened to determine if they have a health or nutritional need which will qualify them for the program. Height, weight, and hemoglobin are measured for each potential participant along with an assessment of dietary and other health risks.

WIC provides supplemental nutritious foods, nutrition education and counseling that are based on assessment findings as well as needs verbalized by participants. Along with nutrition education, WIC participants can purchase specific foods that are designed to supplement their diets with nutrients that benefit WIC’s target population. Participants utilize the WIC EBT system to make their purchases. This is an electronic system that replaces paper food checks or vouchers with a card for food benefit issuance and redemption at authorized WIC grocery stores.

WIC foods include infant cereal, iron-fortified adult cereal, vitamin-C rich fruit or vegetable juice, eggs, milk, cheese, yogurt, peanut butter, dried and canned beans/peas, canned fish, soy-based beverages, fruits and vegetables, baby foods, whole wheat bread and other whole grain options.

WIC recognizes and promotes breastfeeding as the optimal source of nutrition for infants. For women who do not fully breastfeed, WIC provides iron fortified infant formula. Special infant formulas and medical foods may be provided when prescribed by a physician for a specified medical condition. In 2018, WIC received state recognition for our services and infrastructure that support participation and successful outcomes. WIC also restructured the WIC Clinic flow to implement client “rooming in”, resulting in an increase in client satisfaction.

WIC Participation During 2019		
Participant Type	Number	% Of Caseload
Pregnant Women	149	6%
Breastfeeding Women	177	8%
Postpartum Women	296	13%
Infants	428	19%
Children		
<ul style="list-style-type: none"> • Age 1 – 329 • Age 2 – 285 • Age 3 – 258 • Age 4 – 388 	1,260	54%
Yearly Total = 2,310 unduplicated participants		

Race of WIC Participants in 2019	
Race	% Of Caseload
Asian	17%
Black	11%
American Indian/Alaskan Native	1%
Native Hawaiian/Pacific Islander	>1%
White	70%
Total	100%

Ethnicity of WIC Participants in 2019	
Ethnicity	% Of Caseload
Hispanic or Latino Origin*	9%
Not Hispanic or Latino Origin*	91%
Total	100%

*Hispanics may be of any race, so also are included in applicable race categories.

WIC Participation During 2020		
Participant Type	Number	% Of Caseload
Pregnant Women	116	5%
Breastfeeding Women	203	9%
Postpartum Women	293	13%
Infants	402	18%
Children <ul style="list-style-type: none"> • Age 1 – 320 • Age 2 – 294 • Age 3 – 252 • Age 4 – 388 	1,254	55%
Yearly Total = 2,268 unduplicated participants		

Race of WIC Participants in 2020	
Race	% Of Caseload
Asian	16%
Black	11%
American Indian/Alaskan Native	3%
Native Hawaiian/Pacific Islander	1%
White	69%
Total	100%

Ethnicity of WIC Participants in 2020	
Ethnicity	% Of Caseload
Hispanic or Latino Origin*	10%
Not Hispanic or Latino Origin*	90%
Total	100%

*Hispanics may be of any race, so also are included in applicable race categories.

WIC Participation During 2021		
Participant Type	Number	% Of Caseload
Pregnant Women	98	5%
Breastfeeding Women	209	10%
Postpartum Women	237	11%
Infants	358	17%
Children <ul style="list-style-type: none"> • Age 1 – 326 • Age 2 – 257 • Age 3 – 255 • Age 4 – 367 	1,205	57%
Yearly Total = 2,107 unduplicated participants		

Race of WIC Participants in 2020	
Race	% Of Caseload
Asian	15%
Black	10%
American Indian/Alaskan Native	3%
Native Hawaiian/Pacific Islander	1%
White	71%
Total	100%

Ethnicity of WIC Participants in 2020	
Ethnicity	% Of Caseload
Hispanic or Latino Origin*	9%
Not Hispanic or Latino Origin*	91%
Total	100%

*Hispanics may be of any race, so also are included in applicable race categories.

WIC PROJECTS:

Breastfeeding Education and Support: The American Academy of Pediatrics has identified breastfeeding as the ideal method of feeding and nurturing infants; and has recognized breastfeeding as primary in achieving optimal infant and child health, growth, and development. The WIC Program continues to promote breastfeeding as best for baby, best for mom. In its sixth year, the Breastfeeding Peer Counselor program continues to reach women with relevant breastfeeding information and support.

Our Peer Counselor had contact with the following number of women each year:

- 2019 – 245
- 2020 – 294
- 2021 – 271.

All the registered dietitians have received certifications in breastfeeding (Certified Breastfeeding Educator, Certified Lactation Counselor, Certified Lactation Educator). All WIC staff (registered dietitians and support staff) are aware that they each have an important role in promoting, protecting, and supporting breastfeeding.

Coffective: Coffective is an initiative in which hospitals and the WIC Program work together to achieve the shared goal of helping every new mom and baby get off to a good start. Coffective aims to improve breastfeeding rates by achieving three main goals:

- Preparing WIC mothers to receive evidence-based care by providing consistent messaging prenatally.
- Implementing evidence-based practices in the hospital.
- Increasing utilization of community support services such as WIC.

WIC and health care providers participating in Coffective use pictures as tools to help teach and prepare a mother and her family for baby's arrival. Expecting families can download a Mobile App to help prepare for the hospital, build their care team, and communicate their wishes. All education materials and training are based on the Baby Friendly Hospital Initiative.

Coffective enhances continuity of care for WIC moms, provides on-going breastfeeding support, connects mothers to resources in the community, and helps each mom meet her own breastfeeding goals.

“Feeding Your New Baby: A Very Personal Choice” Class: The WIC Breastfeeding Peer Counselor and Breastfeeding Coordinator developed this class for pregnant women to prepare for baby's arrival. The class encourages breastfeeding through education and connection with resources for support. In 2019, 39 pregnant WIC participants plus their support people attended the class. In 2020 and 2021, 28 and 31 pregnant WIC participants and their support people attended the class. In April of 2020 we switched to a virtual class due to COVID-19. Participation in the class remained steady. In 2021, we purchased a class PowerPoint in Spanish to better connect with our Hispanic families. Promotion efforts include mailed and text messages to women due to deliver soon, telephone calls, referrals by staff working in the Nurse-Family Partnership Program, and notices published on the Health Department website. Class participants report increased knowledge and increased likelihood they will breastfeed following the class.

Lead Screenings: Blood lead screening was offered to children at ages one and two years in the WIC Program. A total of 430 children received blood lead screening from the WIC Program in 2019. In 2020, 101 children received a blood lead screening in the WIC clinic. Once WIC went to remote-only services in April of 2020 no lead screenings were conducted from April 2020 through December 2021.

Oral Health Screenings: WIC staff partnered with NorthLakes Clinic to have a dental hygienist at WIC clinics doing oral health screenings, offering fluoride varnishes, and assisting WIC families with establishing a dental home. This partnership continued in 2019 and the first quarter of 2020 when COVID-19 forced WIC to discontinue in-person services. In 2019, 860 fluoride varnishes were placed on children participating in our

WIC program. In the first three months of 2020, 59 fluoride varnishes were placed. We were not able to get data on the number of dental homes that were established.

Western Wisconsin WIC Breastfeeding Support Group on Facebook: The Western Wisconsin WIC Breastfeeding Support Group on Facebook began in November 2020 and continued into 2021. This is a supportive community for women who reside in Western Wisconsin, are participating in the WIC program, and are pregnant, breastfeeding or have breastfeeding experience. Our goal is to connect moms with others in our area who may be facing similar challenges and reaching similar milestones so you can share experiences, ask questions, and support one another on your journeys. The group is monitored by the WIC Breastfeeding Coordinator and the WIC Breastfeeding Peer Counselor. They post 4-5 times a week with information, encouragement, and support.

WIC Breastfeeding Buddy Program: The Buddy program began in October 2020 as part of a grant pilot. The Buddy Program was for women who wanted to connect with another mom who was around the same stage of pregnancy or breastfeeding journey. They were able to be there to support each other during pregnancy and throughout their breastfeeding experiences. They were there to listen, share, encourage and celebrate each other! The Breastfeeding Peer Counselor was able to connect 23 moms with one another and facilitate conversation. As of mid-2021, this program is no longer being offered on a regular basis but only if a mother expresses interest in more support and connecting with another mom.

POLICY AND SYSTEMS DIVISION

COMMUNICATIONS

Communications			
	2019	2020	2021
Quoted in or Wrote Print Articles	94	82	63
Press Releases	60	69	55
Facebook Posts	232	14*	379
Interviews with Media Sources	96	182	134

*Tracking of Facebook post was not maintained during 2020

National Public Health Week 2019 (April 1st – 5th): Health Department Staff celebrated the work that happens every day in the department to create a healthier Eau Claire. The theme this year was “Creating the Healthiest Nation: For science. For action. For health”. The week included snacks (provided each day by designated divisions), a press release was sent to media, daily Facebook posts, and Lieske kicked off the week a Facebook LIVE video! This video has reached many of our community residents.

National Public Health Week 2020 (April 6th – 12th): The theme of the 25th anniversary of public health week was *Looking Back, Moving forward* and highlighted the important work and accomplishments over the years. Facebook posts were shared related to the theme and the BOH proclaimed the week national public health week.

National Public Health Week 2021 (April 5th – 9th): The week was dedicated to bringing communities together to recognize all the hard work that has been put into public health in the past year (and frankly every year) and highlight health issues that are important to focus on. The 2021 theme was “Building Bridges to Better Health” to recognize the physical distance between us all but staying connected as a nation. To celebrate this together as a department, a variety of activities were put together for staff to including wellness activities, Bingo and a video sharing staff memories from the last year.

Other Communication Accomplishments:

- Developed a communication handbook for Health Department staff.
- Utilized GIS mapping website to communicate COVID-19 related data to the public
- Used Facebook live as a new way to engage with our audience: 91 live COVID-19 media briefings were held March 13, 2020, through June 2021, with 1 additional prior to February 2022.
- Utilized Canva to better illustrate health-related data to the public with social media and in reports
- In August 2021, began using Instagram ads to share information to a younger demographic. First ad was for a COVID-19 vaccination clinic aimed at 18–24-year-olds.
- From August 2020 - December 2022 our Facebook page content reached over 621,000 individuals. Our Facebook page was visited over 66,000 times, and we gained over 1,900 new likes to our Facebook page.

COMMUNITY HEALTH ASSESSMENT/COMMUNITY HEALTH IMPROVEMENT PLAN:

The Community Health Assessment (CHA) for Eau Claire County was collaboratively completed with the health department, 3 health care institutions, and United Way in June of 2021. This was the third shared Community Health Assessment completed with a core group of Eau Claire and Chippewa County partners. The partners previously completed a shared community health assessment in 2015 and 2018. Project partners include Chippewa County Department of Public Health, Chippewa Health Improvement Partnership, Eau Claire City-County Health Department, Eau Claire Healthy Communities, Marshfield Clinic Health System, Mayo Clinic Health, HSHS Sacred Heart Hospital, HSHS St. Joseph’s Hospital, and United Way of the Greater Chippewa Valley. The purpose of the assessment is to evaluate and prioritize the health concerns in the county and mobilize the community in working towards health outcomes. As a result of the assessment process, collaborative interventions can be implemented to align with the identified health priorities. The assessment documents the variety of data collection methods used to discern more clearly the issues facing the community. These methods included: a community health survey, community conversations, coalition meetings, and comprehensive secondary data collection. Drug use, mental health, alcohol misuse, obesity, and healthy nutrition were the top priorities identified.

The Community Health Improvement Plan (CHIP) was created by a diverse coalition of residents, community organizations, schools, health care providers, businesses, faith communities and government agencies. The 2021-2024 Community Health Improvement Plan (CHIP) is a plan for action that will define how our community can work together to address priority health issues identified by Eau Claire County residents in the Community Health Assessment. Healthy Communities and the Alliance for Substance Misuse Prevention are working together along with partner organizations across multiple sectors of our community lead the development of this community-owned plan to direct programs and policies to create a healthier Eau Claire County for all. The County Health Rankings and Roadmaps Take Action Cycle was used to guide the CHIP process. The plan will be completed in the spring of 2022.

EAU CLAIRE HEALTHY COMMUNITIES

The Policy and Systems team provided leadership and support to the Healthy Communities Council and action teams: sharing health data, prioritizing health needs, compiling, and analyzing data for the community health improvement plan, developing action teams goals and objectives, researching evidence-based strategies and best practices, providing tools and facilitation skills to advance the planning process, completing the annual report, and writing grants.

Staff provided leadership for the *Eau Claire Healthy Communities Celebration and Healthy Eau Claire Legislative Events*.

- 2019 Eau Claire Healthy Communities Celebration -On April 25, 2019, around 60 community members attended the Eau Claire Healthy Communities Annual Celebration and learned more about the coalition's accomplishments over the past year. The celebration included opportunities to improve connections. Attendees also heard from Carl Alves whose presentation prompted people to think about how they can build resources and collaborate better in our community to improve health.
- Every year some of our members and the Eau Claire City-County Board of Health serve on the Healthy Eau Claire Legislative Taskforce to engage Wisconsin State and Federal legislators around making the Chippewa Valley a healthier community. In January 2020 (pre-COVID-19), members of Eau Claire Healthy Communities met with local legislators to discuss policy solutions to promote healthy and safe housing in Eau Claire County. The 2020 Healthy Community Celebration was cancelled due to COVID-19.
- In January of 2021, the Eau Claire City-County Board of Health and Eau Claire Healthy Communities partnered to hold the Winter Legislative Event. This virtual event focused on housing and the connection to health outcomes in the Chippewa Valley. This was a challenging topic to tackle in a short time, but there was a lot of great discussion.

HEALTHY COMMUNITIES ACTION TEAMS 2019

In addition to the support the Policy and Systems team provides, other designated health department staff served on Healthy Communities Action Teams providing planning input, technical support, and public health tools to assure successful strategic planning, implementation, and outcome evaluation for the following teams:

Chronic Disease Prevention Action Team partnered with Chamber of Commerce on Downtown Wellness Walk. Various group activities were coordinated with community partners and stationed along the route. Walkers enjoyed cardio drumming, pickleball, Kubb, yard tennis, and yoga in Phoenix Park. The team promoted Rx for Parks resource initiative. The goal of the initiative is to encourage wellness, physical activity, and enjoyment of outdoor activities in the Eau Claire community. A social media plan, Facebook posts, and videos were developed to highlight specific parks/activities throughout the year. In 2018, several Action Team members attended the Walkability Action Institute. This training inspired goals for a reconstruction of State Street in Eau Claire for increased accessibility for people who bike and walk. In 2019, this Action Team saw these changes carried out. Outcomes included improved sidewalks, increased access to Putnam Park, dedicated bike lanes, and intersection improvements to reduce the number and severity of crashes.

Healthy Communities launched their own Facebook page! The goal is to increase visibility of Healthy Communities and their efforts, as well as provide a different way for the community to connect with us. The Health Department will provide support for this role.

Healthy Relationships Action Team facilitated the evidence-based “Safe Dates” curriculum. In 2019, 222 youth from Augusta, Eau Claire, and Fall Creek learned about attitudes and behaviors associated with dating abuse and violence. Other organizations and groups also participated, including Marriage & Family Services. Additionally, the action team created and distributed a Healthy Relationship Toolkit. This toolkit assembles resources for teens and adults to use when exploring, teaching, or talking about healthy relationships. The goal of the toolkit is to empower people to build healthy relationships from the ground up and help navigate challenges that may come from these conversations. It can be viewed here: <http://bit.ly/ECRelationshipToolkit>

High-Risk Drinking Prevention Action Team helped Coordinate Neighborhood Tour. Action Team members, community residents, and Eau Claire police officers raised awareness of neighborhood safety and quality of life issues with the goal of creating positive change. Attention was called to specific issues related to alcohol consumption including affordability, acceptance, attractiveness, advertisement, and social media presence. The team also worked to increase awareness of the community impact of high-risk drinking. They coordinated outreach through press releases, social media, media interviews and presentations. Over 100 community members attended presentations led by this Action Team to increase awareness of high-risk drinking behaviors in Eau Claire County and discuss how we might change drinking culture. Additionally, they supported getting the Eau Claire Excessive Intoxication Diversion Programs up and running. Two programs were created for UW-Eau Claire students and community members who receive their first excessive intoxication ordinance citation. Individuals in these programs are provided with education, complete a self-awareness inventory, and engage in opportunities to develop goals toward preventing excessive intoxication.

Mental Health Action Team provided QPR (Question – Persuade – Refer) suicide prevention training for youth and adults. QPR suicide prevention training facilitators trained 1036 youth and 220 adults in 2019. Youth participants included middle and high school students from Altoona, Augusta, Eau Claire, and Fall Creek. In addition to school staff, adult participants included members from area businesses, Eau Claire Chamber, colleges & universities, and support groups. They hosted third annual Flash Mob for Mental Health Awareness Month in May. The Action Team partnered with the Fall Creek Dance Team to dance to decrease mental health stigma. The purpose of the event was to spread awareness about the importance of standing up to stigma related to mental health and taking care of ourselves. They also partnered with Chamber of Commerce on Downtown Wellness Walk. Members of this Action Team wrote positive messages and drew pictures along the route to boost walkers’ moods.

Oral Health Action Team promoted Oral Health Behaviors during Children’s Dental Health Month. Multiple events were held in February including a poster contest and story time with Chippewa Valley Technical College (CVTC) dental hygiene students. 4th and 5th grade students were challenged to design a poster for the contest using the theme, “Brush and clean in between to build a health smile.” 117 posters were submitted from Altoona, Augusta, and Eau Claire! The top winners received a water bottle and Oral-B power toothbrush. Initiated #DitchtheVapeCV Campaign, which was a social media challenge offered to high school students in Eau Claire County and Chippewa Falls. The focus was to increase youth awareness and knowledge about the effects of vaping and tobacco on oral health. In addition, they helped distribute materials to community. The team had tables at different events in the community and gave oral health handouts, flyers, and toothbrush kits to over 100 community residents. Members attended events at the Community Table, Sojourner House, and Anthem’s New Baby New Life Community Baby Shower.

HEALTHY COMMUNITIES ACTION TEAMS 2020

Due to the COVID-19 pandemic, many Council, Steering Committee, and Action Team members were pulled away from their work with Eau Claire Healthy Communities to provide services at their places of employment within healthcare, public health, human services, and more. Our members are our coalition's greatest asset, and we are proud of all their hard work this year, both within our coalition and our broader community. The coalition continued to strive towards the same goals with some changes to how they were reached including quickly pivoting from physical in-person meetings to virtual meeting formats, maximizing breakout group features of virtual meeting platforms to create specialized work groups within Action Teams, and increasing focus of Healthy Communities on social media.

Chronic Disease Prevention Action Team partnered with Visit Eau Claire and Wintermission Eau Claire to introduce the "EmBRRRace The Winter Challenge." This social media challenge encouraged Eau Claire residents to be active, explore, and take photos of themselves at their favorite scenic spots and historic Eau Claire bridges, as well as to savor time at home with cozy indoor activities. For this challenge, participants used hashtags including #EauWinter and #BridgeFace to connect on social media. They continued to promote the Rx Parks resource and implemented social media plan. Facebook posts were developed and shared showcasing Putnam Heights Park, Lakeshore, Otter Creek, and Fairfax Park. The Rx Parks initiative encourages wellness, physical activity, and enjoyment of outdoor activities in the Eau Claire community.

Healthy Relationships Action Team facilitated the evidence-based "Safe Dates" curriculum. In 2020, 32 youth participated in the Safe Dates programming throughout the Chippewa Valley. The Safe Dates curriculum was adapted to be taught virtually during the COVID-19 pandemic. The team also promoted and distributed their Healthy Relationship Toolkit on social media. This toolkit assembled resources for teens and adults to use when exploring, teaching, or talking about healthy relationships. The goal of the toolkit is to empower people to build healthy relationships from the ground up and help navigate challenges that may come from these conversations. It can be viewed here: <http://bit.ly/ECRelationshipToolkit>. Additionally, they purchased 150 *C is for Consent* books with Sexual Violence Prevention grant dollars to distribute to local families. Books were distributed through partner programs like the Nurse-Family Partnership and UW-Extension programs to help families start conversations about boundaries and consent. This book encourages that it's not just about 'the talk' but an ongoing, age-appropriate conversation about responsibility and respect.

High-Risk Drinking Prevention Action Team focused on promoting the Municipal Inventory Checklist, a tool to help guide a review of local policies to determine what policies could help improve the alcohol environment. The checklist was shared with the City of Eau Claire leadership team. Action Team members attended the virtual Wisconsin Alcohol Policy Seminar. The seminar focused on alcohol policy for local officials, law enforcement, coalition leaders, and advocates offering alcohol policy topics in multiple workshops. Members learned about evidence-based policies, practices, and enforcement to prevent and reduce excessive or illegal alcohol consumption that they will use in future work of the team.

Mental Health Action Team provided QPR (Question – Persuade – Refer) suicide prevention training for youth and adults. QPR suicide prevention training facilitators trained 349 youth and 19 adults in 2020. They created and promoted social media to promote mental health and safe social connectedness during COVID-19. The top-performing post on the Eau Claire Healthy Communities Facebook page reached over 780 people in December 2020.

Oral Health Action Team focused on promoting resources and education on the importance of health as it relates to overall health. This team was unable to meet for most of 2020.

HEALTHY COMMUNITIES ACTION TEAMS 2021

Chronic Disease Prevention Action Team partnered with Wintermission and Visit Eau Claire to create several social media challenges. A few examples of the challenges include plan your Perfect Eau Claire Afternoon, Hygge Challenge, and a color Snow Sculpture Challenge. The team also coordinated a St. Patrick's Day-themed scavenger hunt called, "Good as Gold". This challenge included twists and turns through eight Eau Claire parks, searching for leprechauns, gold coins, lucky dice, and more. A new project for the team was to partner with Chippewa and Dunn Counties to create and promote the Chippewa Valley Summer Activity Passport Program. This program encouraged individuals and families to take steps toward improving their health by participating in activities and visiting the area's many parks and trails. Program participants were asked to snap photos of themselves doing activities and then upload them to receive prizes. They also continued to promote Rx Parks resources and continued implementing social media plan.

Healthy Relationships Action Team continued to facilitate evidence-based programs at schools and community organizations throughout EC County. Programs like Safe Dates, HIP Teens, and the 3 R's (Rights, Respect, and Responsibility) taught youth about recognizing red flags, healthy relationship skills, and how to make healthy and safe decisions in a relationship. 155 youth received Healthy Relationship programming in 2021. The team also created and distributed a "Talking about Consent with Kids" bookmark. This bookmark includes an age-appropriate timeline to help adults and their children discuss bodies, respect, and the building blocks of consent. The bookmark is available in English, Spanish, and Hmong. Additionally, they distributed 150 copies of "C is for Consent" books to local organizations.

High-Risk Drinking Prevention Action Team learned about the impact of alcohol outlet density on alcohol use. University of Wisconsin- Eau Claire students worked with the Action Team to gather data on alcohol density, specifically exploring the density of alcohol outlets in proximity of college campuses and how it may be associated with unhealthy drinking and alcohol-involved crimes among college students. The data showed that the closer establishments are to each other, the problems increase. This data also revealed the "hot spots" in Eau Claire that are mapped out to illustrate the overlay of crimes with high outlet density. They also partnered with the Alliance for Substance Misuse Prevention and hosted joint community meetings to move through the community health improvement planning process to address alcohol and substance misuse in our community.

Mental Health Action Team encouraged Eau Claire residents to chalk positive, encouraging notes on neighborhood sidewalks to promote mental health during Mental Health Awareness Month (May). The team partnered with several schools and organizations on this initiative. They dropped off free chalk, along with example messages at these locations, and encouraged them to share pictures on social media. They also had free chalk available for pickup at the United Way of the Greater Chippewa Valley and the Community Table. The Action Team promoted chalking via a press release and on Facebook. From the Facebook post: 3,975 people were reached, 163 engagements, 25 shares, and 3 people messaged our page to learn about getting involved. They continued to create social media posts to promote mental health and safe social connectedness. Over the year, the team also posted tips, tricks, and information about self-care, gratitude, acts of kindness, self-esteem and more.

Oral Health Action Team has promoted oral health as a top health issue over the past 20 years, even though it was never named a top health priority in our Community Health Assessment. However, over the past few

years, Action Team members have had less capacity to participate in the Action Team. Many efforts were made to reach out to new members and engage prior members, yet no additional capacity was added to the team. As Healthy Communities began their community health improvement planning in fall 2021, Steering Committee members reached out to additional contacts to gauge interest in reviving the action team. While they received some enthusiasm, there still was not capacity or commitment from anyone to join the Oral Health Promotion Action Team. The Council plans to vote on next steps for the action team at the meeting in May 2022.

QUALITY IMPROVEMENT

In addition to implementing and assisting with internal QI projects, the team works with the Workforce Development team to provide training as needed to both the QI Core Team and other staff.

- In 2019, the team completed the *Quality Improvement Organizational Assessment* by NACCHO. This self-assessment tool (SAT) allows organizations to assess the degree to which QI has been integrated into our department, identify concrete steps to advance a culture of quality. This SAT is designed for all LHDs, regardless of organization size or current state of organizational culture and is aligned with the Public Health Accreditation Board (PHAB) requirements and other national initiatives. The assessment has been completed in 2015, 2017 and now 2019. Scoring varied up and down in categories, but our overall score went up which is good. The QI team will continue to focus on training opportunities for staff and building QI opportunities into existing staff meetings
- In 2020, due to COVID-19 response the QI trainings and team meetings were impacted and not held in 2020. Some quality improvement projects were still moved forward related to COVID-19 response activities. With the focus being on COVID response this last year our primary goal was to get feedback given our current response including work related to disease investigation, data reporting, and now vaccination. Feedback routes were built into our communication efforts through operationalizing a call center line and ongoing communication via social media.
- In 2021, the QI trainings and team meetings were still impacted and were not yet held. The goal is to resume QI team meetings and to hold a refresh of QI with all-staff in the upcoming year. While we struggled with formal QI projects, we did use the principles. An example of a QI project that was worked on in 2021 was around streamlining the contact tracing process and the related documentation.

REGULATION AND LICENSING DIVISION

BED BUGS:

The Health Department responds to bed bug infestation complaints in private homes, rentals, and public establishments. Even though bed bugs are not known to transmit disease, they are considered a pest of public health significance. The bites of bed bugs can cause severe allergic reactions, as with any other type of sensitivity to bug bites, as well as emotional distress to affected persons. Bed bugs are difficult to control due to their habits and resistance to pesticides. Therefore, when Health Department staff encounter an infestation, the services of a professional pest control operator are strongly recommended, along with other advice regarding prevention and control measures. There is no official tracking or reporting of infestations, but anecdotal evidence indicates the number of infestations is increasing and the State Health Department expects this trend to continue.

CHILDHOOD LEAD POISONING PREVENTION:

This program conducts lead hazard assessments of home where children with lead poisoning reside, assure that children with elevated blood lead levels receive ongoing medical follow-up and testing as recommended, and provide lead hazard assessment upon request of families with young children living in high-risk homes for the presence of lead hazards.

It also connects with our WIC program and assures that high-risk children served there have a documented blood lead test. Staff also spend time on education to the public on reducing and managing potential lead hazards, as well as providing consultation and literature on how to safely eliminate lead hazards. Lastly, they collect and test environmental samples for lead.

Elevated Blood-Lead Investigations: Public Health Nurses provide case management and teaching to the families of children with elevated blood lead levels. In 2013, the Centers for Disease Control recommendation changed from 15 micrograms per deciliter to 5 micrograms per deciliter. Depending upon the findings of case management, children may be referred to Environmental Health staff for investigation and evaluation of the home environment. Lead abatement orders are issued during these investigations if significant lead hazards are identified.

Elevated Blood-Lead Investigations			
	2019	2020	2021
Public Health Nurse-Childhood Lead Cases	21	14	8
Referrals to Environmental Health (Home Evaluations)	1	4	0
Lead Abatement Orders	2	2	1

General Lead Investigations: Environmental Health Specialists receive special training and certification for lead investigation and enforcement. An X-ray Fluorescence (XRF) lead paint analyzer is used during the home evaluations to determine the presence and quantity of lead in a painted or varnished surface. Environmental Health Specialist investigate and provide consultation and literature on how to safely eliminate lead hazards within or outside the home.

XRF Lead Investigations		
2019	2020	2021
7	8	4

ENVIRONMENTAL AND RECREATIONAL SANITATION:

With this program the Health Department collects and tests drinking water, pool, and beach samples to assess for contamination and determine corrective measures when unsafe levels of contaminants are identified. They also license and inspect for overall safety and sanitary conditions and enforce state and local regulations governing these facilities, as well as provide consultation to facility operators and the public on preventing health and safety hazards when operating or using these facilities.

Body Art Facilities: Body art facilities located in both the city of Eau Claire as well as Eau Claire County are licensed and inspected by the health department. These facilities are inspected at least annually. The Department of Safety and Professional Services (DSPS) is the state agency that regulates body art facilities, and the health department acts as an agent of DSPS to license the facilities in Eau Claire County. As an agent of DSPS, the department enforces state code SPS 221, as well as Chapter 6 of the Board of Health Regulations that address Body Art Establishments. In 2018, the Board of Health approved an education verification for body art practitioners. This is to provide proof of bloodborne pathogen training and at least 200 hours of experience gained under a licensed practitioner. Since 2018, 12 new practitioners have received their verification certificate.

Body Art Facilities		
2019	2020	2021
17	18	20

Body art establishments are required to use sterile equipment on each customer, and they are required to test their sterilization equipment at least monthly. An alternative to using equipment that must be sterilized is using all single use, disposable equipment. This requires a variance from DSPS but allows an establishment to be able to be 100% disposable and not have to sterilize equipment between customers.

One option for testing sterilization equipment is using the local health department laboratory. Establishments can submit the spore tests to the lab for testing, verifying that their sterilization procedures are adequate. Private testing facilities may also be used, and records are verified at routine inspections.

Spore Ampule Tests								
2019			2020			2021		
Satisfactory	Unsatisfactory	Total	Satisfactory	Unsatisfactory	Total	Satisfactory	Unsatisfactory	Total
20	0	20	11	0	11	11	2	13

Lodging: As an agent of the state (Department of Agriculture, Trade, and Consumer Protection), the health department licenses and inspects all lodging facilities in Eau Claire County. Types of lodging facilities include hotels, motels, tourist rooming houses, and bed and breakfast establishments. The health department enforces rules and regulations set forth by ATCP 72 and 73, as well as Board of Health Chapter 2. Lodging facilities are inspected at least annually for general safety and sanitation, as well as for any additional licensable activities that may occur there, such as food service and swimming pools.

Lodging			
	2019	2020	2021
Total Number of Licensed Establishments	56	48	54
Routine Inspections/Preinspections	62	29	44
Reinspections	5	6	4
Complaints	13	5	8
Consultations	14	1	4
Total Inspections (includes all types):	80	40	56

Parks and Campgrounds: Campgrounds and recreational and educational camps in Eau Claire County are licensed and inspected by the health department. All public parks, campgrounds, beaches, and recreational areas are inspected before the season gets underway. The department also licenses and inspects special event campgrounds. Water samples are collected from wells at all public parks and campgrounds and tested in the Health Department Laboratory for bacteria and nitrates.

Campgrounds and Recreational Camps			
	2019	2020	2021
Total Number of Campgrounds	13	13	18
Total Number of Educational Camps	2	2	3
Special Event Campground Inspections	4	0	5
Routine Inspections	18	12	19
Preinspections	3	1	3
Reinspections	0	0	1
Investigations	1	2	0
Consultations	16	12	2
Total Inspections (includes all types):	25	24	30

Public Facility Regulation: The County and City of Eau Claire have adopted rules which establish minimum sanitary standards for the operation of various public facilities. Below are the facilities regulated and inspected under these City and County regulations.

FOOD PROTECTION:

The Food Protection Program conducts inspections of food establishments including restaurants, retail stores, grocery stores, schools, temporary food establishments, and mobile food establishments. Inspections are done to ensure compliance with state and local regulations related to food safety. Staff investigates foodborne illness or other food safety related complaints to protect the public’s health. They also provide consultation to the public and industry on food safety best practices.

Foodborne Illness Risk Factors and Good Retail Practices Violations Summary: The Health Department strives for continued improvement of violations within licensed facilities. Some activities our department has developed to reduce the number of priority violations include numerous educational and enforcement activities such as an annual newsletter, refrigeration temperature logs, risk control plans, enforcement letters, reinspection fees, and citations.

This data includes all inspection types for both Retail – Serving Meals and Retail – Not Serving Meals.

Foodborne Illness Risk Factors Violations Summary			
<i>Priority and Priority Foundation Violations These are most likely to contribute to a foodborne illness.</i>	Violation Numbers		
Violation Category	2019	2020	2021
Demonstration of Knowledge	75	27	13
Employee Health*	0	4	41
Good Hygienic Practices	16	10	40
Preventing Contamination from Hands	166	64	229
Approved Source	14	7	8
Protecting from Contamination	222	105	149
Time/Temperature Control	366	142	209
Consumer Advisory	10	9	12
Highly Susceptible Populations	0	0	0
Chemicals	130	68	96
Plumbing	19	28	19
Conformance with Approved Procedures	15	11	16
Total Violations	960	460	689
Total Inspections	1290	587	751
Average Priority Violations/Inspection	1.3	1.3	1.1

*2021 Code Addition of Mandatory Vomiting and Diarrheal Plans for Facilities

Good Retail Practices Violations Summary			
<i>If not corrected can contribute to a foodborne illness</i>	Violation Numbers		
Violation Category	2019	2020	2021
Safe Food and Water	0	0	0
Food Temperature Control	29	19	18
Food Protection	173	63	145
Proper Use of Utensils	48	23	29
Utensils and Equipment	230	154	90
Physical Facilities	219	88	193
Total Violations	793	390	536
Total Inspections	1290	587	751
Average Core Violations/Inspection	1.6	1.5	1.4

Recurring and Corrected Violations			
Violation Category	Violation Numbers		
	2019	2020	2021
Repeat Violations	25%	27%	18%
Violations Corrected on Site	32%	24%	25%
Total Violations Cited Per Year	1769	849	1225

Food Inspection Program: Our Department of Agriculture, Trade, and Consumer Protection (DATCP) agent agreement requires annual inspection of all licensed establishments. In 2018, DATCP changed administrative codes and put all food facility types into a Retail Food Category. Retail food is now split into 2 categories: Retail Food – Serving Meals and Retail Food – Not Serving Meals.

Our inspection frequency is based on complexity of the establishment. During each routine inspection, our inspectors go through an assessment with the operators to discuss the types of processes, number of meals served, and any special plans or variances the facility may have. This assessment provides the appropriate licensing category for each food facility. Food establishments that do more complex processing are inspected two times per year, more frequently than other facilities.

Our department conducts risk-based inspections. These inspections focus on the violations that are most likely to make people sick. During these routine inspections, we work with operators to correct priority violations while on site. Reinspections are conducted if priority violations are not corrected at the initial inspection. Inspection fees or other enforcement tools may be used if violations remain uncorrected.

While enforcement is one route of food code compliance, education is an integral piece of our inspections and outreach. Education is a large part of our inspections, because we want to make sure employees follow and understand food safety rules. We use demonstrations, handouts, and examples to train staff during inspections. In most establishments, it is required that one employee be a Certified Food Manager and pass an approved test proving they are familiar with food safety rules.

Laboratory Food and Beverage Sampling Program: Food samples and food preparation surface swabs are periodically collected from food/beverage service establishments within the City and County of Eau Claire for laboratory analysis using standard plate count (SPC) and coliform testing. The results are used to help identify possible sanitation deficiencies in these establishments. If results indicate sanitation deficiencies, an Environmental Health Specialist works with the establishment and the operators to identify problems and to correct any deficiencies.

Bacterial standards have been adopted as part of state and local regulations for ice cream products, milk products, ground meat and ice. These products are sampled and tested on a periodic basis to assess compliance with these standards. Failure to meet the bacteria standards can result in an order from the Health Department that requires sale of the product to be discontinued. Establishments with deficiencies receive evaluations and recommendations by our Environmental Health Specialists regarding storage, handling, temperature maintenance, cleaning, sanitizing and rotation of products exceeding bacteria standards. Bacteria standards have not been adopted for restaurant foods, cold cuts, sandwiches, deli

products, sodas, or food/preparation surface swabs. Bacteria counts for these products are used as a guideline to indicate possible sanitary deficiencies. Environmental health staff will conduct on-site evaluations where test results indicate sanitary deficiencies may exist.

In addition to sampling and analyzing food samples in our local certified public health laboratory, the department also collects retail food equipment swab samples under the DATCP Agent Agreement. These samples are shipped to the Bureau of Laboratory Services in Madison, Wisconsin and are routinely tested for the presence of *Listeria monocytogenes*.

Routine sampling of retail delis, hamburger, pasteurized milk, and food/preparation surfaces was not completed in 2021 as staff was responding to COVID-19.

Sample Type: Cold Cut, Retail Deli Foods, and Sandwiches			
Coliform Guideline (500 CFU)			
Year	Total # of Samples	# Exceeding	% Exceeding Standard
2019	8	0	0.00%
2020	1	0	0.00%

Sample Type: Hamburger Samples						
SPC Standard (4,000,000 CFU)				Coliform Standard (2,000 CFU)		
Year	Total # Samples	# Exceeding	% Exceeding Standard	Total # Samples	# Exceeding	% Exceeding Standard
2019	16	3	18.75%	16	3	18.75%
2020	2	0	0.00%	2	1	50.0%

Sample Type: Food/Preparation Surface Swabs						
SPC Guideline (100 CFU)				Coliform Guideline (10 CFU)		
Year	Total # Samples	# Exceeding	% Exceeding Standard	Total # Samples	# Exceeding	% Exceeding Standard
2019	578	86	14.88%	578	26	4.50%
2020	22	2	9.09%	22	0	0.00%

Sample Type: Milk Dispensers						
SPC Standard (20,000 CFU)				Coliform Standard (10 CFU)		
Year	Total # Samples	# Exceeding	% Exceeding Standard	Total # Samples	# Exceeding	% Exceeding Standard
2019	46	13	28.26%	46	10	21.74%
2020	51	10	19.61%	51	3	5.88%
2021	35	17	48.57%	35	12	8.33%

Sample Type: Frozen Yogurt, Soft Freeze, Ice Cream, and Premixes

SPC Standard (100,000 CFU)				Coliform Standard (50 CFU)		
Year	Total # Samples	# Exceeding	% Exceeding Standard	Total # Samples	# Exceeding	% Exceeding Standard
2019	437	39	8.92%	485	96	19.79%
2020	313	36	11.50%	340	41	12.06%
2021	328	41	12.50%	305	41	13.44%

Sample Type: Pasteurized Milk (Retail Stores)

SPC Standard (20,000 CFU)				Coliform Standard (10 CFU)		
Year	Total # Samples	# Exceeding	% Exceeding Standard	Total # Samples	# Exceeding	% Exceeding Standard
2019	76	14	18.42%	81	11	13.58%
2020	6	0	0.00%	6	0	0.00%

*Note: The percent of samples exceeding bacteria standards or guidelines in the following tables can be biased to a higher percent by the number of repeat samples tested to achieve correction of a specific problem. All samples are measured in colony-forming units (CFU).

Retail Food-Not Serving Meals (Previously Known as Retail): Examples include grocery stores, convenience stores, coffee shops, ice cream shops

These establishments are inspected at least one time per year and more often if they are more complex such as a grocery store with a full deli. Reinspections are conducted if violations cannot be corrected onsite at the initial inspections. Our laboratory does specific sampling in deli and meat departments of retail food establishments. See “Laboratory Food and Beverage Sampling Program” for more information.

Retail Food-Not Serving Meals - Licenses and Inspections			
	2021	2020	2019
Total Number of Active Licenses	169	175	177
Active Processing Licenses	141	128	146
Active Non-Processing Licenses	28	9	31
Routine Inspections	168	95	181
Reinspections & Second Reinspections	30	29	41
Pre-inspections (New/change of owner)	29	27	26
Retail Food Complaints	10	52	43
Total Number of Inspections (all types)	249	185	284

Retail Food-Serving Meals (Previously Known as Restaurants): Examples include restaurants, food trucks, temporary food stands.

Staff routinely inspect restaurants based on a set inspection frequency. Moderate and high complexity facilities are inspected twice per year, while low complexity restaurants are inspected once. All food trucks that operate in Eau Claire County are inspected by the health department at least once per year.

Inspections are also conducted of temporary restaurants operating at one day special events in Eau Claire County. Most special events happen in the summer and include Taste of the Valley, Country Jam, farmers markets, weekly music events, and many more. Temporary restaurants are inspected for compliance with the Wisconsin Food Code and an emphasis is placed on correcting violations onsite. Additionally, our department provides food safety education to non-profit groups who want to serve food for fundraising events. In 2020-2021, few events were occurring due to COVID-19, so temporary restaurant license inspections were uncharacteristically low.

Retail Food-Serving Meals (RSM) Licenses and Inspections			
	2019	2020	2021
Total Number of Licensed Restaurants/Taverns	339	327	328
Routine Inspections - RSM	556	227	340
Reinspections - RSM	154	72	58
Complaints - RSM	56	43	36
Preinspections (New/Change of Owner)	42	21	30
Temporary Restaurant Licenses Issued	39	2	20
Temporary Restaurant Inspections (inc. reinspections)	96	2	50
Total Number of Inspections (all types)	890	409	499

School Food Program: The Child Nutrition Reauthorization Act of 1998 requires annual mandatory health inspections of all school food service facilities participating in the National School Lunch and/or Breakfast Programs. Inspections are conducted at public and private elementary, middle, and high schools in Eau Claire County twice a year. Private wells and septic systems are also inspected for rural schools.

School Food Service			
	2019	2020	2021
Total Number of Schools	34	32	29
Routine Inspections	58	56	55
Reinspections	1	0	1
Investigations	0	0	0
Total Number of Inspections (all types)	59	56	56

HOUSING AND PROPERTY MAINTENANCE AND HYGIENE

Eau Claire City Housing Inspection Program: The Eau Claire City Housing Inspection Program (ECCHIP) program involves a systematic housing inspection effort to all residential homes in the City of Eau Claire. The City of Eau Claire is divided in 5 areas, and each year exterior conditions of individual properties within one defined area are surveyed block by block. During the property survey, dwellings are rated according to the number of structural defect points (areas of deterioration) noted on the exterior of that property. Those properties that have higher scores are used to prioritize properties needing a complete interior inspection from the foundation to the roof.

Year	Part of City of Eau Claire	Number of Parcels Surveyed
2019	East Section – Chippewa River to S Hastings Way	3,422
2020	South – Clairemont Ave to I-94	6,050
2021	West Riverside – Chippewa River to W Clairemont	4,415

The program design continues to be effective in identification of the more significantly deteriorated dwellings in Eau Claire by using an objective means to assess the property conditions. The inspections have identified many significant interior health and safety hazards, have improved block conditions due to exterior maintenance, and have helped to eliminate insect and rodent harborages by enforcement of proper garbage storage and disposal. A continued policy to first notify the owner of a property of a pending inspection and then to establish a joint inspection appointment is felt to be a major factor in the small number of Housing Advisory Board appeals. Conducting inspections with the property owner present reduces confusion of required corrections and increases effective use of staff time. Issuing citations in instances of non-compliance is done to achieve improved compliance within reasonable time periods.

Eau Claire City Housing Inspection Program (ECCHIP) Field Activity Summary					2019	2020	2021
A. CDBG Funds: Primarily used to cover 80% of the 1.0 FTE dedicated to the program plus mileage/supplies/etc.					\$87,354	\$85,400	\$85,400
B. Inspections:							
	1. Dwellings Inspected				127	81	140
	2. Dwelling Units contained in dwellings				180	113	229
	a. Renter-occupied			133	82	164	
	b. Owner-occupied			45	19	62	
	c. Owner and renter occupied			2	12	3	
	3. Total Inspections				1054	673	1013
	a. Initial Inspections			180	113	229	
	b. Reinspection to assess compliance			874	560	784	
	4. Complaint Investigations (Specific problems – not complete inspections)				56	172	20
C. Enforcement Actions:							
	1. Citations Issued				31	1	20
	2. Housing Advisory Board Hearings				0	0	0
	3. Inspection Warrants				0	0	1
	4. Dwelling Units placarded as unfit for habitation				14	8	3
	5. Dwellings with all violations completed				218	172	165
D. Total Program Inspections (1980-2018):							
	1. Total Number Inspected				5067	5148	5288
	2. Houses Brought into Compliance				4902	4976	5123
	3. Houses in Progress				165	172	165

Since 2017, part of the updated Eau Claire Housing Code requires all property owners with one or more rental housing units in the City of Eau Claire to register their properties with the Health Department. This is done by completing a registration form and submitting a fee of \$5 per property. The purpose of the rental registration is to build stronger and more timely communication between our Department and landlords.

Rental Registration		
A. Registration Compliance since 2018:		
	1. Dwellings Registered	7,861
	2. Dwelling Units Registered	21,976
B. Enforcement Actions since 2018:		
	1. Citations Issued	31

Housing Activities Summary			
	2019	2020	2021
Complaint Inspections/Investigations	205	171	167
Complaint Reinspections	457	512	436
Housing Advisory Board Meetings	0	0	0
Dwelling Units Placarded as Unfit for Occupancy	55	67	45
Citations Issued	46	90	119
Total Housing Consultations*	2563	1549	2319
Total Inspections and Reinspections*	1458	1069	1256

*Includes ECHCCP

Housing Code Enforcement: The Housing Maintenance and Occupancy Code is an Eau Claire City Ordinance and has also been adopted by Altoona, Augusta, Fall Creek, Fairchild, and the Townships of Seymour and Union. It is used as an enforcement tool for inspections of properties on a complaint basis and for the Eau Claire City Housing Inspection Program. The code is also used as a guideline on inspections for City Housing Assistance Programs, the County Department of Human Services (referrals regarding sanitary conditions and neglect cases), and for inspections of houses in areas of the county which do not have a housing code. Follow-up inspections and re-inspections are conducted to achieve compliance with the code.

Human Services Investigations: Joint investigations are conducted in conjunction with the Eau Claire County Department of Human Services. These investigations are often more complex, dealing with such issues as unsanitary living conditions, health and safety concerns for children and elderly persons, economic problems as well as housing code violations. Resolution of these cases often involves working with landlords, family members and staff from both agencies.

Interagency Agreement for the Investigation of Dangerous Living Conditions: Dangerous living conditions are those in the home environment which are hazardous, unsanitary or situations where the competency of an individual is such that occupants' lives are seriously threatened. An interagency agreement for the investigation of dangerous living conditions was signed by seven City of Eau Claire and County agencies in 1993. The agencies signing the agreement are the City Police Department, City Fire Department, City Community Development Department, City Attorney's Office, County Department of Human Services, Corporation Counsel's Office, and the City-County Health Department. The purpose of the interagency

agreement is to establish a protocol and team for appropriate city and county agencies to collectively address those problems in a timely and coordinated manner. This team approach has proven beneficial to solving multi-disciplinary and complex housing related problems.

Manufactured Home Communities: Manufactured Home Communities in Eau Claire County are licensed and inspected as an agent of the Wisconsin Department of Safety and Professional Services. Additional investigations of problems or violations are also conducted on a complaint basis. Manufactured Home Communities served by drinking water wells are required by the safe drinking water regulations to have their water tested by a certified laboratory monthly, these results are reported in the Drinking Water and Certified Laboratory sections of this report.

In 2019, the Housing Program worked with local partners to reduce potentially unsafe and unhealthy housing at the Maples Neighborhood in Eau Claire. In this neighborhood, residents wanted to remain in their homes, but some were living in unsafe and unhealthy conditions. In collaboration with residents and local partners, units were inspected for health and safety over time to minimize displacement of residents. Empty units were inspected before they were reoccupied and were prioritized based on external conditions. Complaints and emergency situations are investigated when needed. The Maples Neighborhood went from having 48 occupied units to under 25 occupied units by the end of 2019. In 2020, the land for the Maples Neighborhood was sold and the residents needed to relocate as the park was closed.

Manufactured Home Communities			
	2019	2020	2021
Total Number of Licensed Establishments	17	16	16
Total Number of Licensed Sites	1477	1432	1432
Routine Inspections	17	16	15
Preinspections	0	1	1
Reinspections	41	12	13
Investigations	54	23	14
Total Inspections (includes all types)	112	52	43

Radon: The Eau Claire City-County Health Department administers the US EPA Radon Grant to operate the West Central Radon Information Center. This Center services Buffalo, Chippewa, Clark, Eau Claire, Jackson, Trempealeau, and Pepin counties. The Center aids and resources to these health departments and the public to provide education around the importance of testing for radon in owner-occupied homes.

The only way to know if radon is present in the home is to test for it. Education on the effects of radon and the importance of testing are done throughout the year through press releases, booths at community events and community presentations. Short and long-term kits are sold or distributed at no-cost, along with information on testing and how to mitigate high radon levels over 4.0 picocuries/liter (pCi/L)

Data collected from radon testing in Eau Claire County dates to 1988. The below table indicates the percentages of homes tested which are below the EPA recommended standard of 4.0 pCi/L, and those which are above. Homes with exceeding levels were given recommendations for further testing or mitigation depending upon the level of radon in their home.

Home Radon Levels			
	2019	2020	2021
Total Radon Tests Completed in Eau Claire County	202	165	119
% Of radon levels less than 4.0 pCi/L	75%	65%	60%
% Of radon levels greater than or equal to 4pCi/L	25%	35%	40%

Even though there are statistics for radon levels locally in the County, there is no way to predict what the level of radon will be in a home. The only way to know is to test. Mapping of results obtained thus far has identified some areas that appear to be at higher risk. A GIS map of both the City and County of Eau Claire has been developed. Furthermore, the department provides both short-term and long-term radon test kits for a fee. Homeowners who wish to test their own homes can purchase these kits at the Eau Claire City-County Health Department office located in the County Courthouse.

Radon Home Test Kits Sold/Analyzed			
	2019	2020	2021
Long Term Kit Sales	9	4	8
Short Term Kits Sales	226	175	112
% Of Short-Term Kits Analyzed	90%	94%	94%
Total Kits	235	179	120

HUMAN HEALTH HAZARDS AND SOLID WASTE:

This program enforces state, city, and county rules by responding to complaints regarding human health hazards and requiring corrective measures be taken. Additionally, it implements community initiatives and enforce local regulations to better assure proper handling, storage, and disposal of solid waste.

Garbage Truck Licensing and Inspection: All garbage trucks that operate in the city of Eau Claire are licensed. An Environmental Health Specialist conducts annual inspections on each truck to ensure they are up to code.

Human Health Hazard/Public Health Nuisance Complaints: Wisconsin Statute 254 defines human health hazard as a substance, activity or condition that is known to have the potential to cause acute or chronic illness or death if exposure to the substance, activity or condition is not abated. Wisconsin Statute 251.05 requires the local health department to investigate and abate human health hazards. Additionally, Eau Claire County Ordinance s. 8.12.075 and City of Eau Claire Ordinance chapter 9.36 and s.8.32.230 outline local guidelines for the prevention and regulation of human health hazards and public nuisances. Several of these situations also align with the growing number of human services referral, hoarding, and dangerous living condition investigations reported in the Housing section of this report.

Seven-Mile Creek Landfill: The Health Department holds a seat on the Seven-Mile Landfill Standing Committee which meets quarterly to review, discuss, and monitor the construction and operation of the facility. An Environmental Health Specialist conducts quarterly inspections, and a report is provided to and discussed at the committee meetings.

Solid Waste Inspections			
	2019	2020	2021
Garbage Truck Haulers	7	7	7
Garbage Truck Inspections/Reinspections	98	85	97
Garbage Truck Investigations	2	0	3
Solid Waste Inspections/Investigations	35	42	15
Solid Waste Reinspections	6	12	3
Landfill Inspections	4	2	3

Solid Waste: The Health Department is responsible for the enforcement of city and county ordinances relating to proper storage, collection, and disposal of solid wastes. The table below summarizes the solid waste complaints received and investigated. Substantiated complaints relating to improper storage, collection, or disposal of refuse on private and public property are issued orders and are followed up with enforcement actions to achieve compliance.

Refuse Investigations and Complaints			
	2019	2020	2021
Refuse Inspections	255	103	247
Refuse Investigations	3	7	5
Refuse Reinspections	339	143	390
Public Nuisance Orders Written	12	4	11
Properties Brought into Compliance	250	83	238
Total Inspections (all types)	597	246	642

University Move-Out Events: The “Pack It up, Pass It On” student move out event was developed to deal with the large amount of refuse left curbside by college students during the spring move out. The event brings together charitable organizations and a local garbage company in one convenient location for students. The two charitable organizations are the Family Promise of the Chippewa Valley and Hope Gospel Mission.

FINANCIAL SUMMARY REPORT

The biggest fluctuations from the Health Department’s 2020 actuals compared to the 2021 actuals were mainly due to COVID-19 costs. This included our contractual services where in the spring of 2021 COVID-19 staff were switched from being health department employees to flex-staff. Additionally, there was less COVID-19 grant revenue received in 2021 compared to 2020 which accounts for the fluctuation under intergovernmental grants. There was also a significant different in the other budgeted receipts category which has due to the 2021 use of fund balance that was planned spending of unspent tax levy in 2020 due to COVID-19.

Other fluctuations in our budget included our fixed charges where 2021 saw an increase in work compensation costs, in capital purchases that included the WWPHERC purchase in 2021 versus the WIC remodel in 2020. Additionally, the FPC budgeted for a remodel in both years but did not complete it. There was also a decrease in PNCC WIMCR reimbursement, special charge reinspections, and 25056 ASAP payments

from Marshfield, Sacred Heart, and Mayo. Lastly, in 2021 there was an increased in PNCC Medicaid and family planning reimbursement which accounts for the fluctuations in our intergovernmental charges for services.

2021 HEALTH DEPARTMENT FINANCIAL SUMMARY REPORT

	2020 Adopted	2020	2021 Adopted	2021	Percent Change
	Budget	Actual	Budget	Actual	
Expenses:					
Personnel	5,891,200	6,315,573	6,271,500	6,733,995	6.63%
Contractual Services	448,600	800,420	821,300	1,677,491	109.58%
Utilities	34,700	47,828	35,400	51,464	7.60%
Fixed Charges	16,200	15,385	20,000	21,421	39.23%
Supplies	229,900	356,288	241,700	382,924	7.48%
Contributions & Other Payments	0	0	0	6,598	0.00%
Capital Purchases	112,500	52,425	162,500	26,782	-48.91%
Other Financing Uses	26,600	28,932	26,000	25,983	-10.20%
Total Expenses:	6,759,700	7,616,851	7,578,400	8,926,657	17.20%
Revenues:					
City Taxes	1,918,600	1,918,600	1,955,400	1,955,400	1.92%
County Taxes	1,243,200	1,243,200	1,283,100	1,283,090	3.21%
Sewage System Maintenance Fees	98,000	99,105	100,000	99,250	0.15%
WRS Loan	26,600	26,564	26,000	26,037	-1.98%
Intergovernmental - Grants	1,686,000	4,334,960	2,439,100	3,642,058	-15.98%
License & Permits	729,000	605,292	694,700	650,355	7.44%
Charges for Services	177,000	144,018	156,500	113,778	-21.00%
Charges for Services - Intergovernmental	270,700	132,856	221,800	182,915	37.68%
Miscellaneous	303,100	353,846	406,600	335,745	-5.12%
Other Finance Source - CDBG	85,400	45,815	85,400	108,311	136.41%*
Other Budgeted Receipts - Fund Balance	222,100	-1,287,406	209,800	529,719	-141.15%
Total Revenues	6,759,700	7,616,851	7,578,400	8,926,657	17.20%
Employees FTEs-Dept.		22.07		34.42	55.96%
Employees FTEs-Grants		51.87		39.77	-23.33%
Total		73.94		74.19	0.34%

*This percent change is high, but accurate. The total encompasses a portion of two different grant years, 2020 and 2021. It was underspent in 2020, so spending was increase in 2021 to ensure that the grant was used.

PERFORMANCE MEASURES

#1 HEALTHY HOMES AND PLACES

The Healthy Homes and Places Program is designed to create safe environments in our community where people can live, work, and play. This program consists of services that include inspections, complaint investigations, and outreach initiatives to respond to and reduce harm from risks ranging from lead, radon and mold to natural disasters and environmental emergencies. Place plays a vital role in our health.

OUTPUTS

<i>*Inspections include pre-inspections, routine inspections, re-inspections, second inspections, onsite visits, and complaint investigations unless otherwise noted.</i>	2019	2020	2021
# Of radon consultations/calls	171	208	115
# Of housing consultations/calls	2418	2171	522
# Of Housing complaint inspections*	208	171	168
# Of health department-initiated inspections and reinspections*	1054	671	645
# Of Mobile Home Park inspections*	17	16	16
# Of body art inspections*	30	17	27
# Of campground inspections including special event campgrounds	21	17	19
# Of blood lead screening tests done	430	101	0
# Of radon tests completed	200	164	289
# Of responses to public health threats (environmental)	15	20	18
# Of residences placarded as unfit for habitation	49	30	15
# Of press releases, print articles, interviews on Healthy Homes and Places	5,5,7	1,3,0	4,4,1
# Of Facebook posts on Healthy Homes and Places	33	1	10
# Of interdisciplinary meetings to resolve human health hazard	6	0	2

Performance Goal	Outcome Measures	Benchmark	2019	2020	2021
Decrease injury/hospitalization related to environmental factors	% Of housing complaints investigated	100%	100%	100%	100%
	% Of children with >5 mcg/dl bl lead that was brought below 5 within 6 months	100%	25%	75%	50%
	% Of licensed facilities inspected	100%	100%	68%	100%
	% Of placarded households resolved	75%	61%	60%	75%
	% Of total full housing inspections with violations in 3 or less categories	80%	24%	10%	26%
	% Of unsafe radon test that are provided education	100%	100%	100%	100%

*Inspections include pre-inspections, routine inspections, re-inspections, second inspections, onsite visits, and complaint investigations unless otherwise noted.

#2 SAFE FOOD AND WATER

The Safe Food and Water program assures that residents and travelers will have their health protected when using recreational facilities and restaurants in our community. Services include investigating complaints, inspecting all facilities that provide food and water to the public, testing of private drinking water, and assisting the public in reducing risks of food and waterborne illness. This is important because safe food and water are integral to our health.

OUTPUTS

			2019	2020	2021
# Of Retail Food-Serving Meals inspections*			939	423	494
# Of Retail Food-Not Serving Meals inspections*			311	184	251
# Of School inspections*			65	57	53
# Food service samples (food products, swabs, utensils, etc.) analyzed			1216	421	340
# Of Foodborne Illness Investigations*			27	11	11
# Of private onsite wastewater treatment systems inspections/consultations			1781	2115	1907
# Of water samples (ground and surface) processed/analyzed			3219	2827	2329
# Of recreational water (pools and beaches) investigations/inspections/consultations			1365	989	1196
# Of well locations permits issued (new and replacement)			124	168	163
# Of Facebook posts on Safe Food and Water			24	0	58
# Of press releases, print articles, interviews on Safe Food and Water			3,10,1	13,2,2	1,1,3
Performance Goal	Outcome Measures	Benchmark	2019	2020	2021
Decrease incidence of food and water borne disease outbreaks and fatalities	% Of owners with unhealthy well samples results who receive education and technical assistance	100%	100%	100%	100%
	% Of public wells with uncorrected deficiencies	0%	1%	0%	0%
	% Of recreational water inspections with 2 or less violations	90%	*	*	*
	90% of restaurant priority violations corrected at the time of inspection or first reinspection	90%	70%	69%	100%

*Inspections includes pre-inspections, routine inspections, re-inspections, second inspections, onsite visits, compliant investigations, and follow up

#3 HEALTHY GROWTH AND DEVELOPMENT

The Healthy Growth and Development program ensures that kids and families have the best health outcomes possible through policies and programs addressing reproductive, prenatal, and family health. Services include home visitation, family planning, WIC, school/community partner collaboration, and other programs. This work is important because healthy growth and development is the foundation for later academic achievement, economic productivity, and responsible citizenship.

OUTPUTS

	2019	2020	2021		
# Of clients\visits receiving reproductive health/contraception services:	171	208	115		
# Of WIC clients	2418	2171	522		
# Of Nurse Family Partnership clients	208	171	168		
# Of Nurse Family Partnership visits	1054	671	645		
# Of MCH clients\visits	17	16	16		
# Of pregnancy tests administered	30	17	27		
# Of child vision/hearing screening completed	21	17	19		
# Of adolescents trained in evidence-based program	430	101	0		
# Of people/agencies who received Safe Sleep training (education and supplies)	200	164	289		
# Of Facebook post on Healthy Growth and Development	15	20	18		
# Of press releases, print article, interviews on Healthy Growth and Development	49	30	15		
# Of collaborative community meetings on Healthy Growth and Development	5,5,7	1,3,0	4,4,1		
Performance Goal	Outcome Measures	Benchmark	2019	2020	2021
Decrease injury/hospitalization related to environmental factors	% Negative pregnancy tests who receive birth control method	95%	62.5%	*	98%
	% Of Women who had a positive pregnancy test in FPC referred to WIC/PNCC	80%	60.0%	*	60%
	% WIC clients enrolled in 1st trimester	39%	33.0%	39.0%	44%
Decrease unplanned pregnancies	% Of WIC breastfeeding incidence	73%	79%	81%	82%
Increase healthy birth outcomes	% Of WIC clients received recommended nutrition education contact	60%	67%	39%	22%
Increase early childhood health/healthy start to life	% Of clients with medical home in first trimester	83%	81%	78%	82%

#4 COMMUNICABLE DISEASE

The Communicable Disease program is focused on preventing diseases that spread from person to person, animal to person, and environment to person. These services include community and healthcare provider education, preventive medicine distribution, vaccination, disease testing, environmental monitoring and disease outbreak investigation and prevention. This program is important in decreasing illness and death rates in our community.

OUTPUTS

	2019	2020	2021		
# Of animal bite/exposures reports received:	161	120	151		
# Of immunizations administered during the year:	2165	1070	34,337		
# Of seasonal flu shots administered during the year:	1031	616	362		
# Of outbreaks in nursing homes reported	10	15	11		
# Of clients screened for sexually transmitted infection:	727	556	543		
# Of newly diagnosed cases chlamydia	468	369	406		
# Of communicable disease reports	1183	10,574	12,902		
# Of HIV Partner Service client referrals	16	16	16		
# Of responses to public health threats (communicable disease)	17	169	229		
# Of Facebook posts on communicable diseases	31	4	156		
# Of press releases, print articles, interviews stories on communicable disease	13,19,30	50,44,171	38,18,114		
Performance Goal	Outcome Measures	Benchmark	2019	2020	2021
Decrease vaccine preventable diseases	% Of 2-year-olds who received the recommended vaccinations	78%	74%	76%	78%
	% Of adolescents 11-26 who received the HPV vaccination	39%	45%	47%	39%
	% Of school age children fully immunized	91%	NA	NA	91%
Decrease reportable communicable diseases	% Of those greater than 6 months old vaccinated for influenza	31%	37%	34%	31%
	% Animal bites/exposures receiving follow up	100%	100%	100%	100%
Decrease STIs and communicable diseases	% Of communicable disease investigations completed	100%	100%	100%	100%
	% Staff trained in public health emergency Incident Command System	60%	65%	58%	60%
	% STIs receiving treatment	99%	100%	91%	99%

#5 CHRONIC DISEASE PREVENTION

The Chronic Disease Prevention Program consists of programs and policy work to prevent or reduce the effects of chronic diseases such as diabetes, heart disease, and lung cancer. These services include nutrition education and cancer screening. Additional work in this program includes policy and organizational changes to increase access to healthy foods and create a healthy built environment for all. This program is important because chronic disease is one of the leading causes of death in our community - chronic disease/obesity have been identified as a priority in the two most recent community health assessments.

OUTPUTS

			2019	2020	2021
# Of Farmers' Market Nutrition Education contacts			2863	NA	339
# Of Wisconsin Well Women Program (WWWP) Clients cases			26	30	52
# Of Facebook posts on Chronic Disease Prevention			39	5	44
# Of press release, print articles, interviews on Chronic Disease Prevention			14,39,23	3,25,2	1,31,3
# Of collaborative community meetings on Chronic Disease Prevention			24	8	9
Performance Goal	Outcome Measures	Benchmark	2019	2020	2021
Decrease vaccine preventable diseases	% Of WIC farmers market vouchers redeemed	43%	48%	44%	45%
	% Of WIC children at a healthy weight	65%	65%	16%	NA
	% Of adults (age 20 and older) that report a BMI greater than or equal to 30	31%	28%	31%	28%
	% Of WWWP eligible women received screening for cervical cancer through WWWP	50%	42%	57%	26%
	% Of WWWP eligible women 50-64 who received mammograms through WWWP	75%	64%	78%	55%
Decrease reportable communicable diseases	% Of adults (age 20 and older) with diagnosed diabetes	9%	8%	9%	10%
	Coronary heart disease hospitalization rate per 1,000 population	2.8	2.5	2.8	NA
	Cerebrovascular disease hospitalizations rate per 1,000 population	2.5	2.3	2.3	NA
Decrease STIs and communicable diseases	% Of WIC children with less than 2 hours of screen time daily	75%	67%	66%	63%
	% Of adults (age 20 and older) reporting no leisure-time physical activity	20%	16%	20%	19%
	% Of population with adequate access to locations for physical activity	86%	83%	81%	81%
	% Of population who lack adequate access to food	11%	12%	11%	9%
	% Of population who are low-income and do not live close to a grocery store	5%	6%	6%	6%

#6 Healthy Living and Prevention

The Healthy Living and Prevention Program works to develop a community that fosters the promotion and awareness of mental well-being and addresses the inappropriate consumption and negative health effects of alcohol, tobacco, and other drugs. Services include youth programming, policy change, compliance checks, community collaboration and education. This program is important to improving the lives of children, youth, and adults by mobilizing communities to prevent mental illness and substance abuse. Both mental health and substance misuse have been identified in our community health assessment as top needs in our community.

OUTPUTS

	2019	2020	2021		
# Of youth involved with Life of an Athlete/ SADD	41	41	*		
# Of people trained related to mental health					
QPR	220/1036	19/349	15/0		
ACEs/ Resiliency	544	1	114		
Mindfulness	30	0	20		
# Of alcohol compliance checks	63	*	*		
# Of tobacco compliance checks	38	21	*		
# Referrals to 1st Breath	18	11	7		
# Of Facebook posts on Mental Health/Substance use	69	3	62		
# Of press releases, print articles, interviews on Mental Health/Substance use	21,18,34	2,7,6	10,9,11		
# Of collaborative community meetings focused on mental health	60	44	48		
# Of collaborative community meetings focused on alcohol misuse prevention	23	9	15		
Performance Goal	Outcome Measures	Benchmark	2019	2020	2021
Decrease underage retail access to alcohol and tobacco products	% Of licensed establishments who don't sell to minors during tobacco compliance	100%	95.0%	100.0%	*
	% Of licensed establishments who don't sell alcohol to underagers during compliance	100%	85.0%	*	*
	% Of births where mother reports smoking during pregnancy	10%	14%	9%	14%
Decrease misuse of tobacco, alcohol, and other substances	% Of adults reporting binge or heavy drinking	20%	25%	27%	25%
	% Of youth after SADD training who feel confident to create an accurate and valid activism targeted at youth risk behavior	90%	100%	NA	100%
Decrease underage retail access to alcohol and tobacco products	% Of adults who "strongly agree" or "agree" that they are able to help prevent suicide in their community after QPR training	90%	94.5%	100.0%	93.3%
	% Of youth after QPR program who feel "quite a bit prepared" or "very prepared" to ask the suicide question if needed	80%	81.2%	80.8%	NA