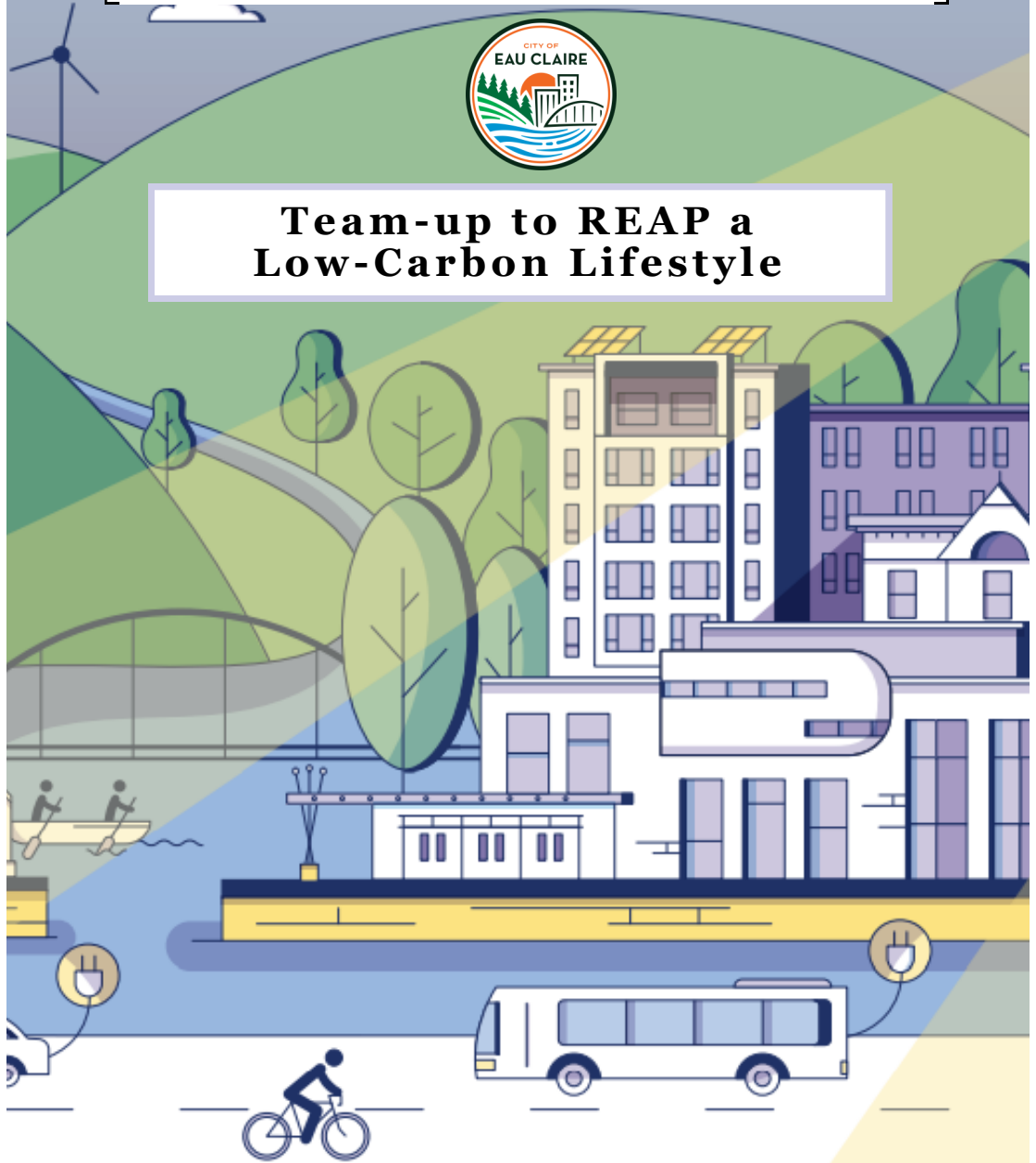


Renewable Energy Action Plan Community Campaign



**Team-up to REAP a
Low-Carbon Lifestyle**



How the Campaign Works

Starting May 15th, 2021

Form a team
and sign up

Calculate
your carbon
footprint

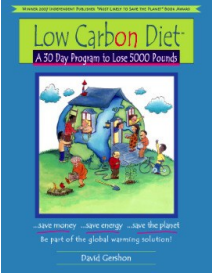
Meet
together &
complete
actions

Calculate
final scores
and ***win
prizes!***

Ending Sept. 15th, 2021

How do I get started?

Follow these steps and visit the campaign website at <http://bit.ly/REAPCampaignEC>

Form a Team	Teams can include families, friends, neighbors, faith-based groups, co-workers, students, etc. Minimum of three households per team if seeking to win prizes. Sign up at the campaign website listed above.
Calculate Carbon Footprint	To track your carbon footprint go to https://www.empowermentinstitute.net/community/low-carbon-diet/household-co2-calculator . Enter your initial score for each team member or household on the team Sign-up form.
Use the Workbook	Check out the Low Carbon workbook at the Eau Claire public library or purchase one online. The links for both can be found under the “Workbook” dropdown tab on the campaign website. 
Action Tips	Go through the workbook with your team and fill out your carbon savings. The Sign-up form has local action tip resources to use and an easy way to calculate your final scores.
Team Meetings	Meetings can be spaced about every two weeks apart to give time to complete actions. The first meeting is the kick off, the second meeting focuses on lifestyle practices, the third on household systems, and the fourth on how to spread the word. A team captain can keep communication and meeting expectations organized.

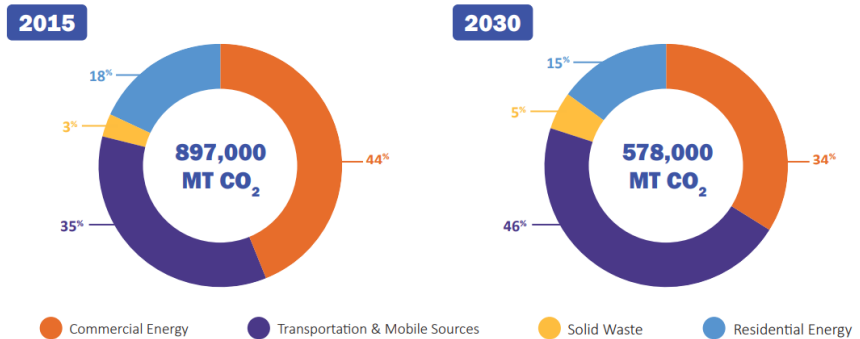
Renewable Energy Action Plan (REAP)

Did you know how much carbon emissions Eau Claire emits annually? Imagine 900,000 hot air balloons being released each year filled with greenhouse gas warming emissions. That is about the size of one metric ton of carbon dioxide equivalent.



On its way towards carbon neutrality by 2050, the City of Eau Claire's 2030 interim goal is to reduce 2015 community greenhouse gas levels by 30%, or 578,000 metric tons of CO₂. This campaign has been developed to empower residents to contribute to the success with concrete actions.

Reduce Carbon Emissions 30% from 2015 Levels



Learn More:

The City has developed many other local resources that can be used. They can be viewed at <https://www.eauclairewi.gov/government/our-divisions/sustainability/reap>. While there, checkout the REAP Executive Summary, Net Zero Energy Building Guide, Solar Ready Guide and Electric Vehicle Roadmap for more actions you can take.

