

Tick I.D. Card



American Dog tick

American (Wood) Dog Tick

May pass
these diseases
to people:
Tularemia,
Rocky
Mountain
spotted fever



Blacklegged or Deer tick

Black-legged (Deer/Bear) Tick

May pass
these diseases
to people:
Lyme disease,
Anaplasmosis,
Babesiosis,
Powassan
disease



Lone Star tick

Lone Star Tick

May pass
these diseases
to people:
Ehrlichiosis,
Tularemia,
STARI



Western-Blacklegged tick

Western Blacklegged Tick

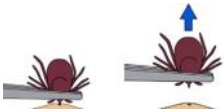
May pass
these diseases
to people:
Tularemia,
Rocky
Mountain
spotted fever



Tick I.D. Card

How to remove a tick:

- Use a fine-tip tweezers. Grasp the tick near the mouth (as close to the skin as possible).
- Gently pull the tick in a steady, upward motion. **Don't squeeze, twist or jerk it!**
- **Don't use nail polish, petroleum jelly or heat to make tick detach from skin.**
- After removing the tick, wash the area. Use a disinfectant on the bite area.



Watch for symptoms like a rash or fever within the next few weeks.

Prevention:

- Avoid spending time in wooded or tall, grassy areas.
- When outdoors, wear a light colored, long-sleeved shirt and light colored long pants (tuck pants into socks).
- Use insect repellent with 20%+ DEET (or recommended alternative) on skin and clothes.
- Permethrin can kill ticks; it can be used to treat clothes, boots, and gear.
- **Don't use permethrin on skin.**
- Do daily tick checks on yourself, children, and pets, especially after being outdoors.
- Shower soon after spending time outdoors .

Signs & Symptoms:

- **Lyme disease:** Early symptoms may include a rash, or “bullseye” rash. May experience fever, headache & body aches. Later symptoms include heart problems, neurological problems & arthritis.
- **Anaplasmosis:** Fever, severe headaches, muscle pains & chills. May also experience confusion, hemorrhages & kidney failure.
- **Ehrlichiosis:** Fever, severe headache, muscle pains & chills. Other symptoms may include nausea, vomiting, confusion & joint pain.
- **Babesiosis:** Spiking fever & chills, flu-like symptoms, headache, body aches, nausea & fatigue.

Signs & Symptoms:

- **Tularemia:** Fever, skin ulcer where tick bite occurred & swelling around tick bite.
- **STARI:** Red “bullseye” rash, fatigue, headache, fever & muscle pains.
- **Powassan disease:** Many do not develop symptoms, but some may include fever, headache, vomiting, weakness, confusion, loss of coordination & seizures.
- **Rocky Mountain spotted fever:** Fever, rash, headache, nausea, vomiting, stomach pain, muscle pain, lack of appetite & red eyes.



Example of
“bullseye”
rash