

2019 State Street Reconstruction Open House



Davies Center – UWEC
December 13, 2018

Introduction



- ☞ Project Information
- ☞ Project Schedule
- ☞ Public Feedback
- ☞ Draft Street Layout
- ☞ Questions



Project Information



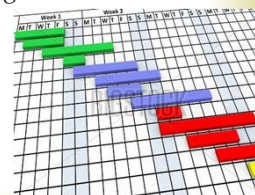
- ❧ Garfield Ave to ~ 300 ft. South of Hamilton Ave
- ❧ Street & Utility Reconstruction
- ❧ Safety & Intersection Improvements
- ❧ Trail Connections in Putnam Park
- ❧ Neighborhood Connection to Jaycette Park
- ❧ Increased Overall Corridor Safety
- ❧ Maintain Traffic Capacity & Flow



Project Schedule



- ❧ 2018
 - ❧ Spring, Summer, Fall
 - ❧ Public Outreach
 - ❧ Data Collection
 - ❧ November, **December**, & January
 - ❧ Public Open House & Neighborhood Meetings
- ❧ 2019
 - ❧ January City Council Work Session
 - ❧ February City Council Approval
 - ❧ May/June Construction Start
 - ❧ Fall - Majority of Project Complete



Public Feedback



- ❧ Improve Pedestrian Crossings & Comfort
- ❧ Change Intersection Control
- ❧ Increase Sidewalk Width for Passing Ability
- ❧ Reduce Vehicle Speeds
- ❧ Provide Bicycle Connectivity
- ❧ Safety concerns at Roosevelt Ave & Lexington Blvd

5 Yr. Crash Data



- ❧ 2013-2017 Crashes
- ❧ Identify Patterns
 - ❧ Rear Ends
 - ❧ Pedestrian/Bicycle
- ❧ High Crash Locations



5 Yr. Crash Data – Third Ward

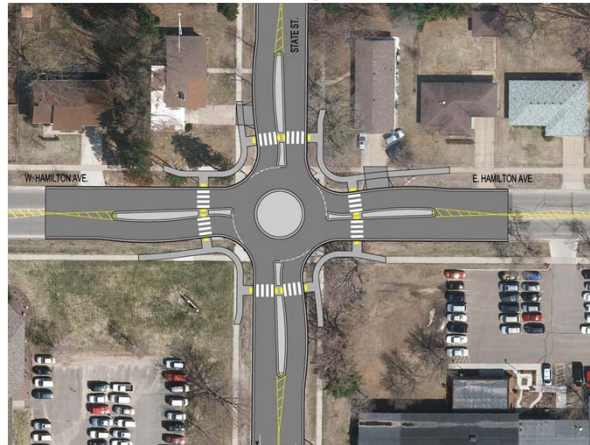


Intersection	YEAR				
	2013	2014	2015	2016	2017
Park @ Summit	6	4	3	1	1
Summit @ State	7	5	2	0	3
Garfield @ State	4	2	2	6	5
McKinley @ State	2	5	1	3	6
Roosevelt @ State	3	3	4	5	7
Bartlett @ State	2	3	1	1	1
Totals	24	22	13	16	23

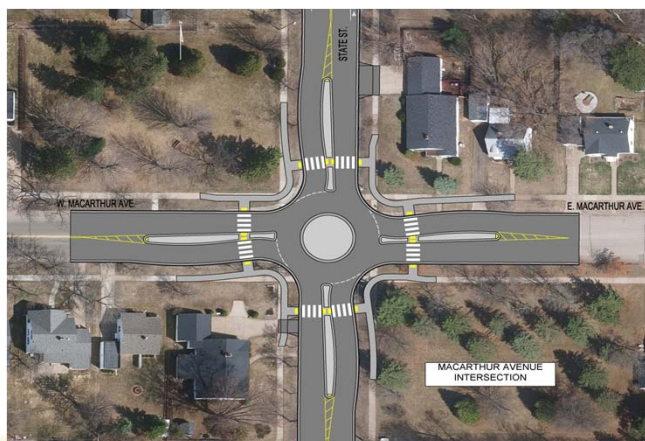
Draft State Street Layout

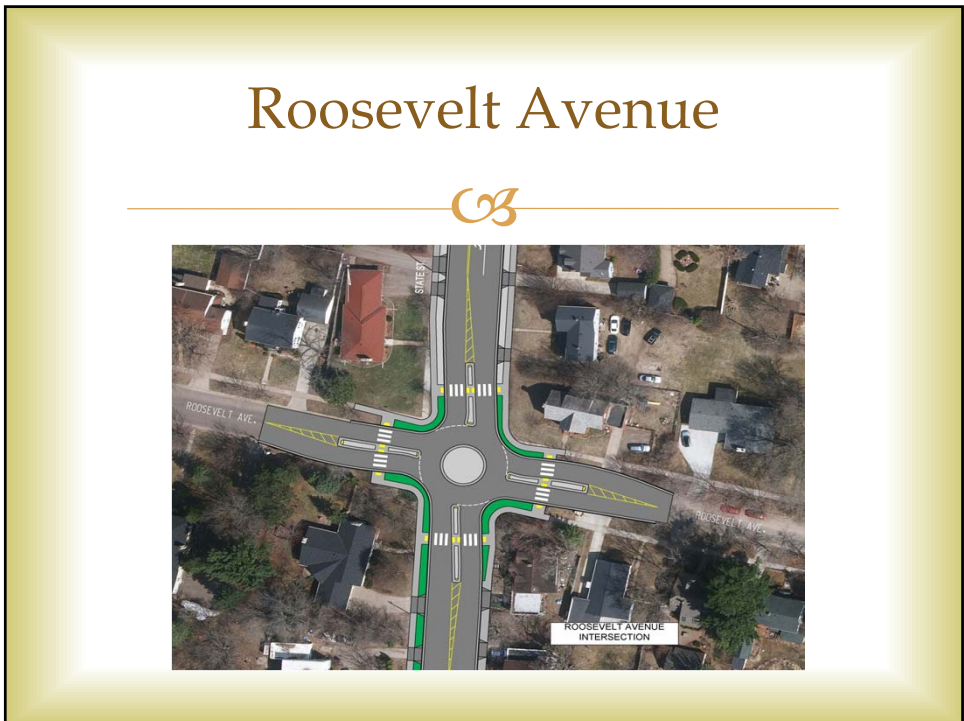


Hamilton Avenue

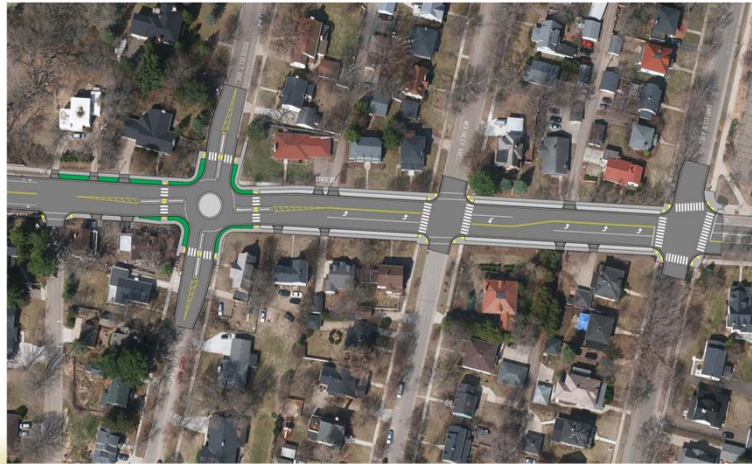


MacArthur Avenue





Bartlett Roosevelt Avenue

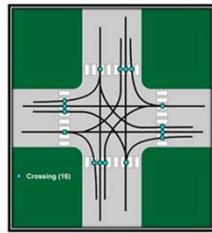
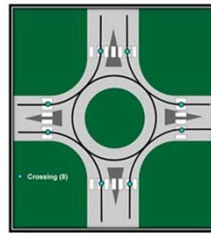
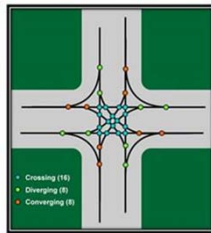
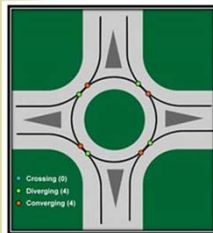


Roundabout Control



⌘ Vehicle Conflict Points

⌘ Pedestrian Conflict Points



⌘ 8 vs 32
⌘ Roundabout = 0
Crossing Conflicts

⌘ 8 vs 16
⌘ Roundabout = 1
conflict per lane

Lane Reduction & Bicycle/Pedestrian Enhancements



☞ Current Lane Configuration

- ☞ Three Lanes/Four Lanes @ 42-52 ft. Face-to-Face

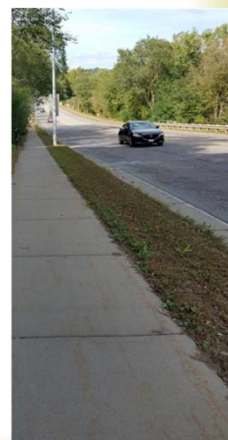
☞ Reduce Lanes

- ☞ Two Lanes with bicycle lanes and roundabouts
- ☞ Lane Capacity - max saturation flow rate is 1,900 vphpl

☞ Roundabouts

- ☞ Capacity of Single Lane Roundabout is 25,000 ADT

☞ Wider Sidewalks, Wider Boulevards, Refuge Islands, Designated Bike Lanes



Additional Input & Feedback



Comment Forms Available
Website

Questions?



Thank You for Attending